

## RJI RJ45 jack 10/100 Mbit PoE angl. LV

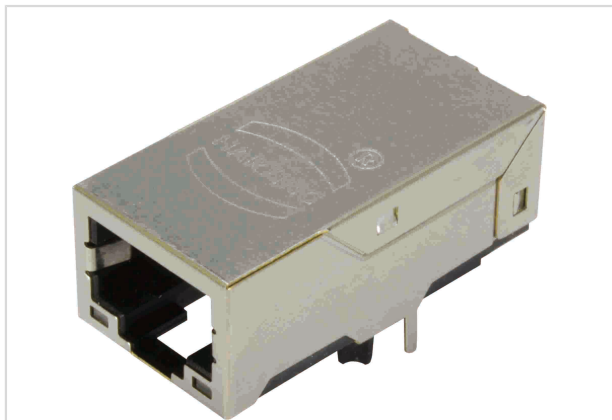


Image is for illustration purposes only. Please refer to product description.

Part number	09 45 551 1151
Specification	RJI RJ45 jack 10/100 Mbit PoE angl. LV
HARTING eCatalogue	<a href="https://b2b.harting.com/09455511151">https://b2b.harting.com/09455511151</a>

### Identification

Category	Connectors
Series	HARTING RJ Industrial®
Identification	Magnetics
Element	Female
Specification	RJ45 with integrated transformer Angled

### Version

Termination method	Wave soldering termination
Shielding	Fully shielded, 360° shielding contact
Number of contacts	8

### Technical characteristics

Rated voltage	60 V
Data rate	10 Mbit/s 100 Mbit/s
Limiting temperature	-40 ... +85 °C
Mating cycles	≥750
Degree of protection acc. to IEC 60529	IP20

### Material properties

RoHS	compliant
ELV status	compliant



Pushing Performance

## Material properties

China RoHS	e
REACH Annex XVII substances	No
REACH ANNEX XIV substances	No
REACH SVHC substances	No

## Specifications and approvals

Approvals	DNV GL
UL / CSA	UL 1977 DUXR2.E254191 CSA-C22.2 No. 182.4, No. 233-09 DUXR8.E254191

## Commercial data

Packaging size	40
Net weight	9.3 g
Country of origin	China
European customs tariff number	85366990
eCl@ss	27460201 PCB connector (board connector)

## X-ON Electronics

Largest Supplier of Electrical and Electronic Components

*Click to view similar products for [Headers & Wire Housings](#) category:*

*Click to view products by [HARTING](#) manufacturer:*

Other Similar products are found below :

[892-18-020-10-001101](#) [58102-G61-06LF](#) [582553-1](#) [0009485154](#) [009176003701906](#) [0050291907](#) [LY20-4P-DT1-P1E-BR](#) [02.125.8002.8](#)  
[609-3404](#) [61062-3](#) [622-0430](#) [622-3653LF](#) [63453-116](#) [636-1030](#) [636-1427](#) [636-3427](#) [636-4007](#) [641938-9](#) [641991-4](#) [644827-2](#) [65817-010LF](#)  
[65817-015LF](#) [65863-015LF](#) [66207-023LF](#) [67095-007LF](#) [67601157](#) [68648-049](#) [70.362.1628.0](#) [70-4210](#) [70-4226B](#) [70-4853B](#) [707-5020](#) [707-5028](#) [71.350.2428.0](#) [71918-208LF](#) [71961-016LF](#) [733-134](#) [733-162](#) [754199-000](#) [760-3052](#) [787-8014-00](#) [79531-3000](#) [FCN-360C032-B](#) [FCN-367T-T012/H](#) [FCN-723D010/2](#) [80.063.4001.1](#) [800-90-001-10-001000](#) [800-90-010-10-002000](#) [801-43-002-10-013000](#) [801-43-006-10-002000](#)