

RJI RJ45 jack 1Gbit angl. LV

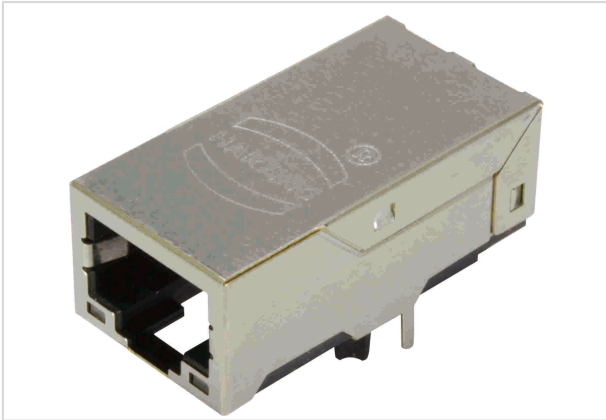


Image is for illustration purposes only. Please refer to product description.

Part number	09 45 551 1540
Specification	RJI RJ45 jack 1Gbit angl. LV
HARTING eCatalogue	https://b2b.harting.com/09455511540

Identification

Category	Connectors
Series	HARTING RJ Industrial®
Identification	Magnetics
Element	Female
Specification	RJ45 with integrated transformer Angled

Version

Termination method	Wave soldering termination
Shielding	Fully shielded, 360° shielding contact
Number of contacts	8

Technical characteristics

Rated voltage	30 V
Data rate	10 Mbit/s 100 Mbit/s 1 Gbit/s
Limiting temperature	-40 ... +85 °C
Mating cycles	≥750
Degree of protection acc. to IEC 60529	IP20

Material properties

RoHS	compliant
------	-----------



Pushing Performance

Material properties

ELV status	compliant
China RoHS	e
REACH Annex XVII substances	No
REACH ANNEX XIV substances	No
REACH SVHC substances	No

Specifications and approvals

Approvals	DNV GL
UL / CSA	UL 1977 DUXR2.E254191 CSA-C22.2 No. 182.4, No. 233-09 DUXR8.E254191

Commercial data

Packaging size	40
Net weight	9.5 g
Country of origin	China
European customs tariff number	85366990
eCl@ss	27460201 PCB connector (board connector)

X-ON Electronics

Largest Supplier of Electrical and Electronic Components

Click to view similar products for [Headers & Wire Housings](#) category:

Click to view products by [HARTING](#) manufacturer:

Other Similar products are found below :

[892-18-020-10-001101](#) [58102-G61-06LF](#) [582553-1](#) [0009485154](#) [009176003701906](#) [0050291907](#) [LY20-4P-DT1-P1E-BR](#) [02.125.8002.8](#)
[609-3404](#) [61062-3](#) [622-0430](#) [622-3653LF](#) [63453-116](#) [636-1030](#) [636-1427](#) [636-3427](#) [636-4007](#) [641938-9](#) [641991-4](#) [644827-2](#) [65817-010LF](#)
[65817-015LF](#) [65863-015LF](#) [66207-023LF](#) [67095-007LF](#) [67601157](#) [68648-049](#) [70.362.1628.0](#) [70-4210](#) [70-4226B](#) [70-4853B](#) [707-5020](#) [707-](#)
[5028](#) [71.350.2428.0](#) [71918-208LF](#) [71961-016LF](#) [733-134](#) [733-162](#) [754199-000](#) [760-3052](#) [787-8014-00](#) [79531-3000](#) [FCN-360C032-B](#) [FCN-](#)
[367T-T012/H](#) [FCN-723D010/2](#) [80.063.4001.1](#) [800-90-001-10-001000](#) [800-90-010-10-002000](#) [801-43-002-10-013000](#) [801-43-006-10-002000](#)