

Han High Temp 6B Base Panel 1 lever

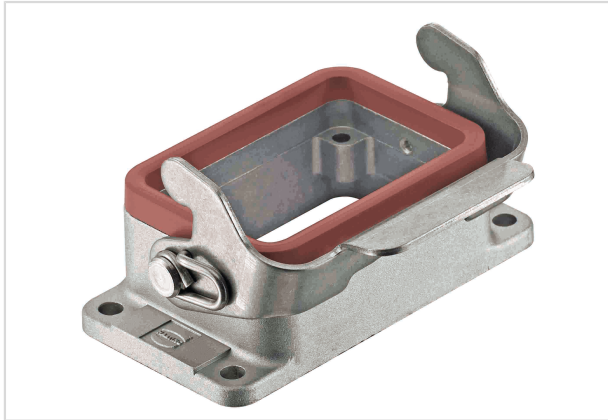


Image is for illustration purposes only. Please refer to product description.

| | |
|--------------------|---|
| Part number | 09 62 806 0391 |
| Specification | Han High Temp 6B Base Panel 1 lever |
| HARTING eCatalogue | https://b2b.harting.com/09628060391 |

Identification

| | |
|--------------------------|--------------------------|
| Category | Hoods/Housings |
| Series of hoods/housings | Han® High Temp |
| Type of hood/housing | Bulkhead mounted housing |
| Type | Low construction |

Version

| | |
|--------------|----------------------|
| Size | 6 B |
| Locking type | Single locking lever |

Technical characteristics

| | |
|--|--|
| Limiting temperature | -40 ... +200 °C With Han® High Temp components |
| Degree of protection acc. to IEC 60529 | IP65 |

Material properties

| | |
|-------------------------|--------------------|
| Material (hood/housing) | Aluminium die-cast |
| Surface (hood/housing) | Uncoated |
| Colour (hood/housing) | Unpainted |
| Material (seal) | FPM |
| Colour (seal) | Red |
| Material (locking) | Stainless steel |
| RoHS | compliant |
| ELV status | compliant |
| China RoHS | e |



Pushing Performance

Material properties

| | |
|--------------------------------------|--------|
| REACH Annex XVII substances | No |
| REACH ANNEX XIV substances | No |
| REACH SVHC substances | No |
| California Proposition 65 substances | Yes |
| California Proposition 65 substances | Nickel |

Commercial data

| | |
|--------------------------------|--|
| Packaging size | 1 |
| Net weight | 112.9 g |
| Country of origin | Germany |
| European customs tariff number | 85389099 |
| eCl@ss | 27440202 Shell for industrial connectors |

X-ON Electronics

Largest Supplier of Electrical and Electronic Components

Click to view similar products for [Heavy Duty Power Connectors](#) category:

Click to view products by [HARTING](#) manufacturer:

Other Similar products are found below :

[647757-1](#) [6643411-1](#) [6646058-2](#) [6646137-1](#) [6646138-1](#) [6646479-1](#) [6646608-1](#) [6646786-1](#) [6646940-1](#) [6651091-1](#) [6651525-1](#) [6651529-1](#)
[6651788-1](#) [696475-1](#) [73000005059](#) [73000005642](#) [765-15-0080A](#) [765-16-0080B](#) [829992-1](#) [902-77-02113](#) [129-1J](#) [AN0024023](#) [E6374G1](#)
[e6389g2](#) [157-43GW8](#) [MS3117-14AC](#) [1643543-1](#) [1650540-1](#) [1651811-2](#) [1766260-1](#) [1766282-1](#) [1766966-1](#) [1791340000](#) [NLDFT-3-BL-L-](#)
[S120-M40A](#) [NLDFT-N-W-L-C240-M40B](#) [NLS-2-R-C240-M40B](#) [NLS-N-W-C240-M40B](#) [NPS-3-BL-T6](#) [1986615-1](#) [2-1589900-8](#) [2199314-1](#)
[KA8102](#) [9300480317](#) [SBS50BRN#6](#) [29131](#) [29652](#) [1646905-1](#) [1648320-1](#) [1648582-1](#) [1650195-2](#)