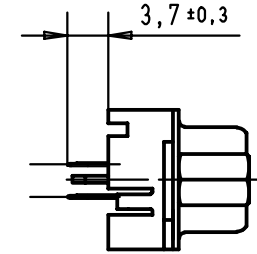
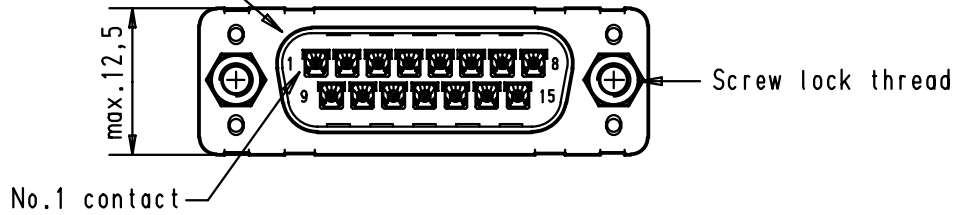
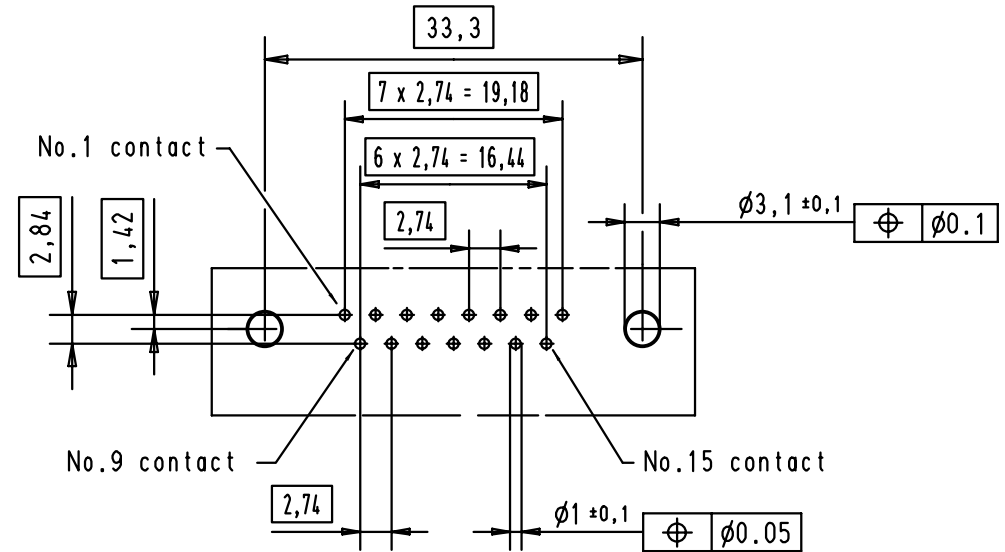
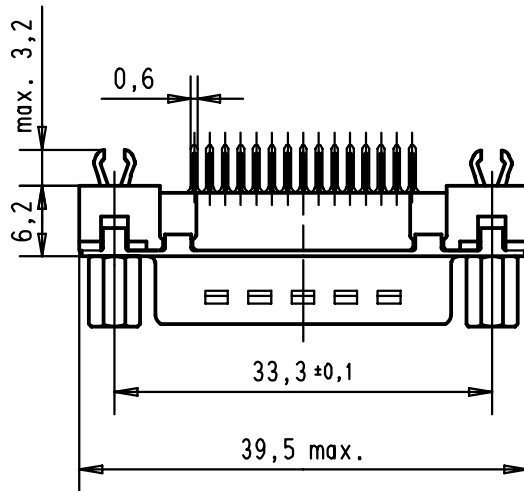


5 4 3 2 1

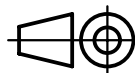

Mating face according to : MIL-C-24308 / DIN 41652 / CECC 75301-802



Printed board layout component side



Connector retention and insertion forces on the PCB = 25 / 80 Newtons.

A	09 65 261 6733	M3	2						 D-Sub, 15 poles, male, straight with solder pins 3.7, screw lock and grounding board lock.	Maßstab/ Scale 1,5:1
	09 65 261 7733	M3	3					Detail. 07-FEB-02 JB		
	09 65 261 5733	M3	0.76 µm Au					Insp.		
	09 65 261 6713	4-40 UNC	2					Stand.		
	09 65 261 7713	4-40 UNC	3	29723	05-MAR-02	JB	HARTING EURL F-95972 Paris			
	09 65 261 5713	4-40 UNC	0.76 µm Au	29746	07-FEB-02	JB	 TB 09 65 261 X7X3		Blatt/ Page 1	
	Part number	Screw lock thread	Performance level	Mod.	Dat.	Name	Sub.			

Note: Obligatory information about HARTING products can be obtained exclusively from the data sheets.

Inquiry

The data sheet is up to date

2D files

PDF

DXF

© Copyright 1999-2003 Harting KGaA and its licensors - Any suggestions and bug reports are welcome at: HARKIS@harting.com

Note: Obligatory information about HARTING products can be obtained exclusively from the data sheets.



Data sheets are available in following formats

2D files

Typenblatt

Typenblatt

© Copyright 1999-2003 Harting KGaA and its licensors - Any suggestions and bug reports are welcome at: HARKIS@harting.com

Note: Obligatory information about HARTING products can be obtained exclusively from the data sheets.

Inquiry

The data sheet is up to date

2D files

PDF

DXF

© Copyright 1999-2003 Harting KGaA and its licensors - Any suggestions and bug reports are welcome at: HARKIS@harting.com

X-ON Electronics

Largest Supplier of Electrical and Electronic Components

Click to view similar products for [D-Sub Standard Connectors](#) category:

Click to view products by [HARTING](#) manufacturer:

Other Similar products are found below :

[56F706-005-LI](#) [56F711-015](#) [LV242999-142T12](#) [015-0341-000](#) [015-0372-005](#) [015-0372-008](#) [015-8755-001](#) [020419-0104](#) [012-0467-000](#)
[012-9507-034](#) [012-9507-114](#) [020745-0008](#) [609-25P](#) [CT2-18-11PCAU](#) [CT6-10SL-3SC](#) [CT6-10SL-4SC](#) [CT6-14S-2SC](#) [CT6E14SA7SC](#)
[CT6N10SL-4SSA34](#) [M83513/01-FC](#) [M83723/76W24619 L/C](#) [M85049/48-3-2F](#) [6STD09PCM99B70X](#) [6STD09SCM99B30X](#)
[6STD09SCT99S40X](#) [6STD15PCT99S40X](#) [6STD15SCT99S40X](#) [6STF09PCM05B70X](#) [7-135760-9](#) [MC11E-10-6SN](#) [747552-3](#) [MD1-21PS](#)
[MDM-15SCBRM7-F222](#) [MDM96517-699](#) [MDM96521-744](#) [MDVB1-21SL1](#) [MIK0-1-7SH003](#) [MIKQ6-7SH076](#) [MIKQ7-7PH077](#) [MIKQ7-](#)
[7PH11](#) [MIKQ7-7PH32](#) [MJSV-28SL61](#) [MKJ4A1F14-55S](#) [8-135760-3](#) [8STD09PCM99B30X](#) [PG-KV/PV-16-GROM-SEALING](#) [GDA15P](#)
[GDAY15PB](#) [980-0000-170](#) [980-0000-171](#)