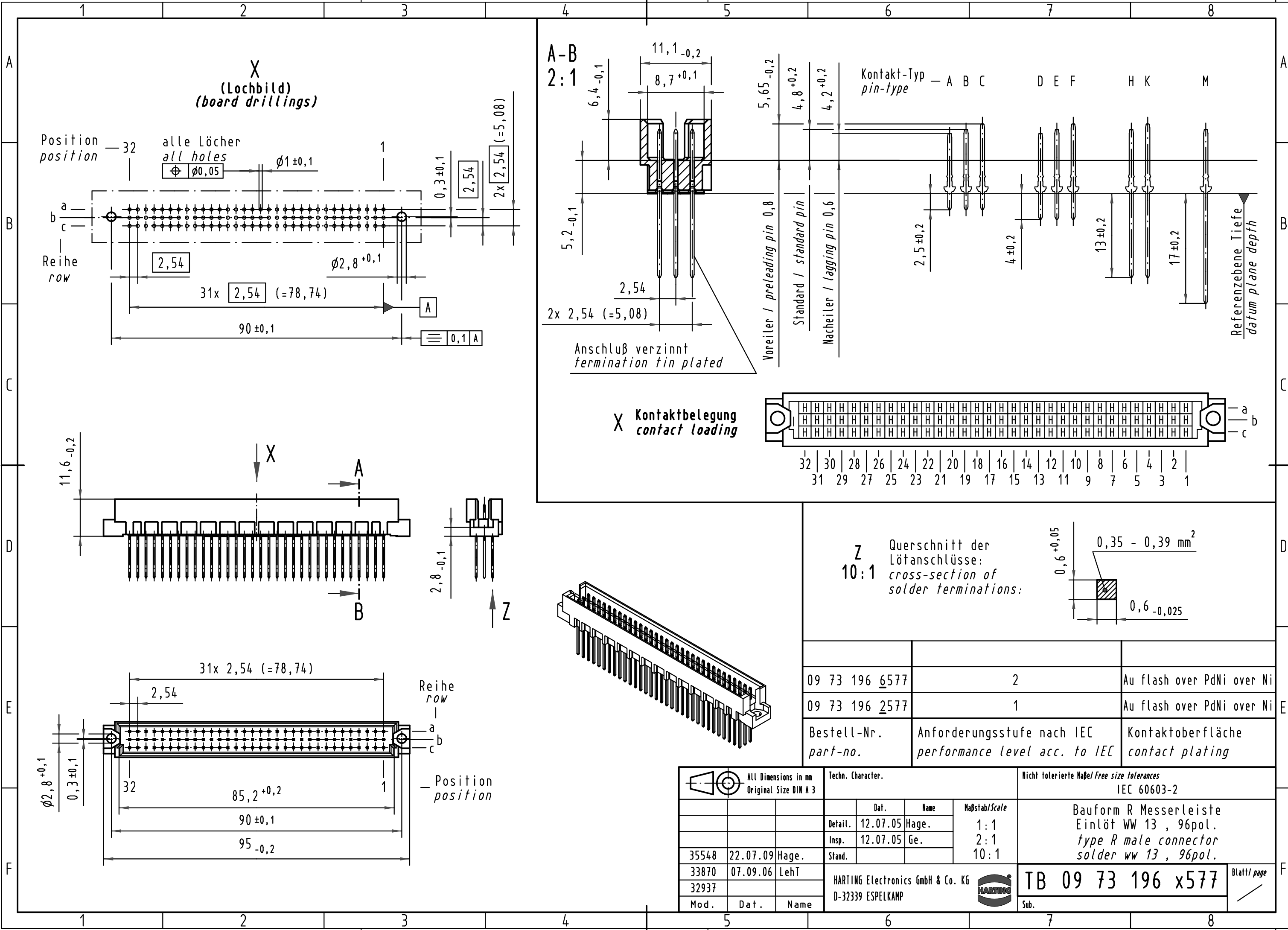
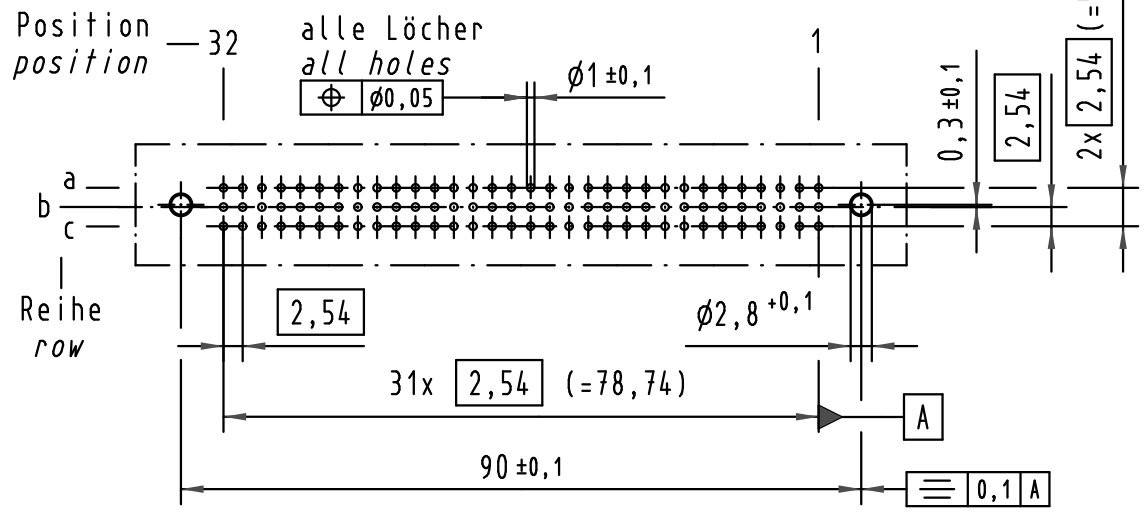


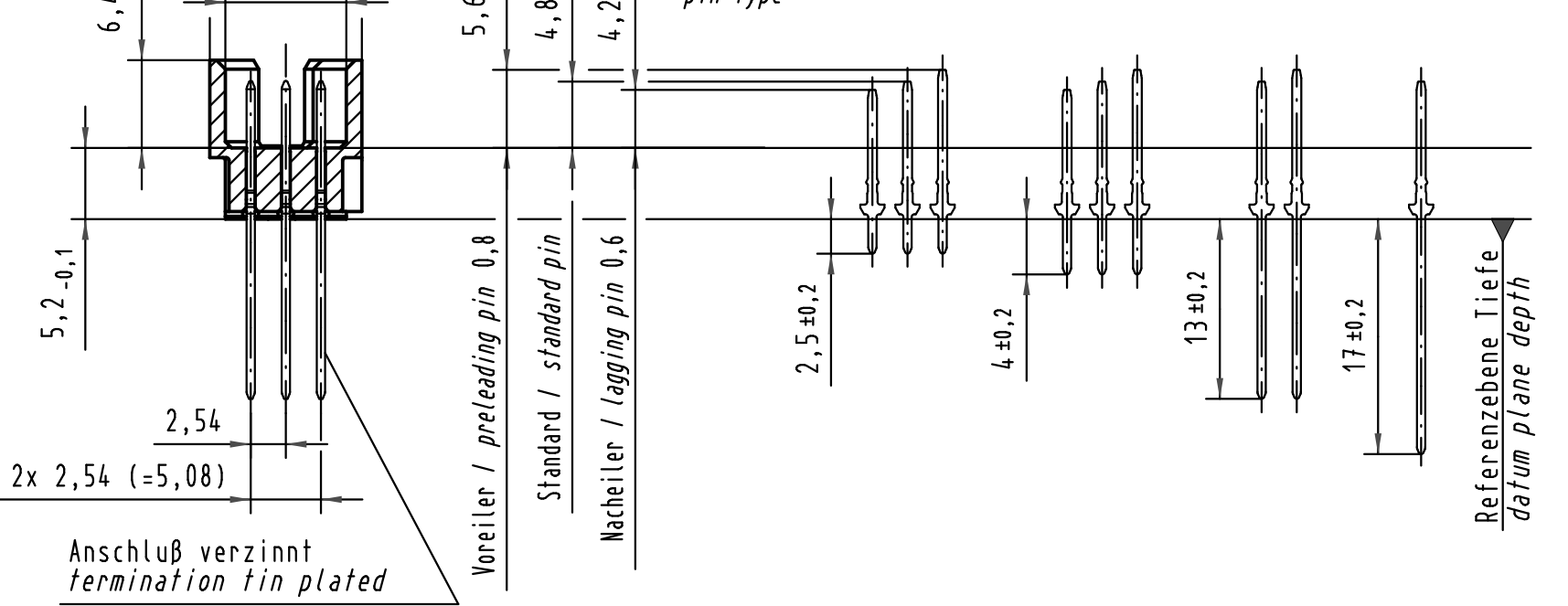
Alle Rechte vorbehalten/ All rights reserved



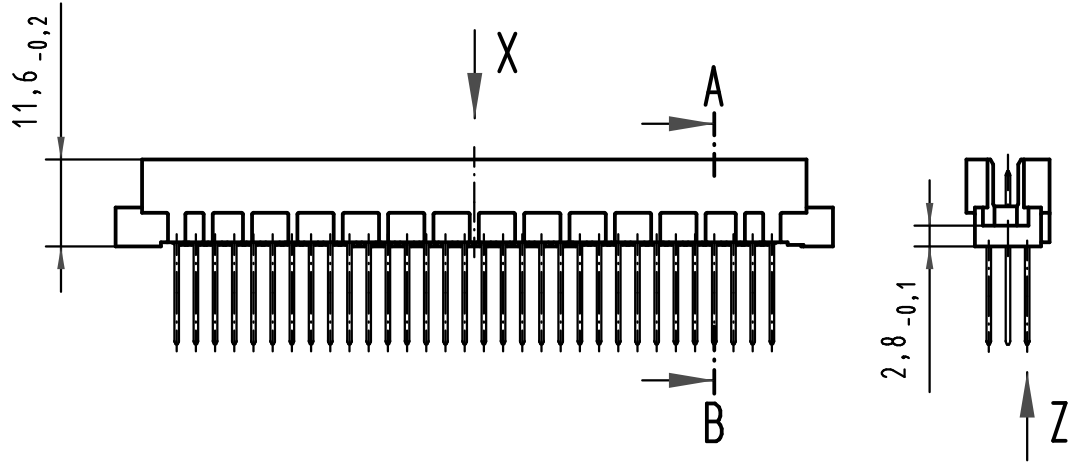
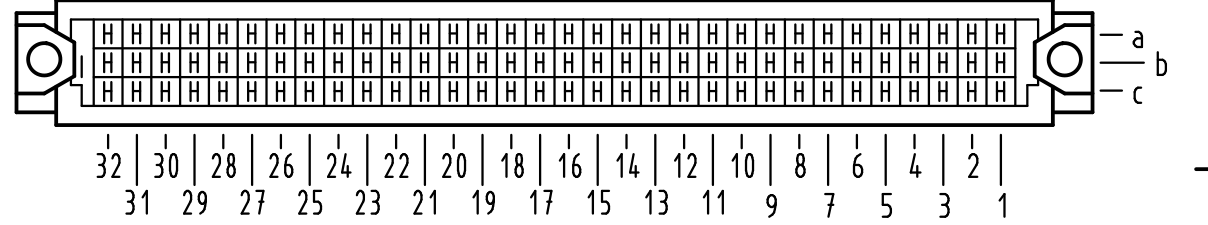
**X**  
(Lochbild)  
(board drillings)



**A-B**  
2:1

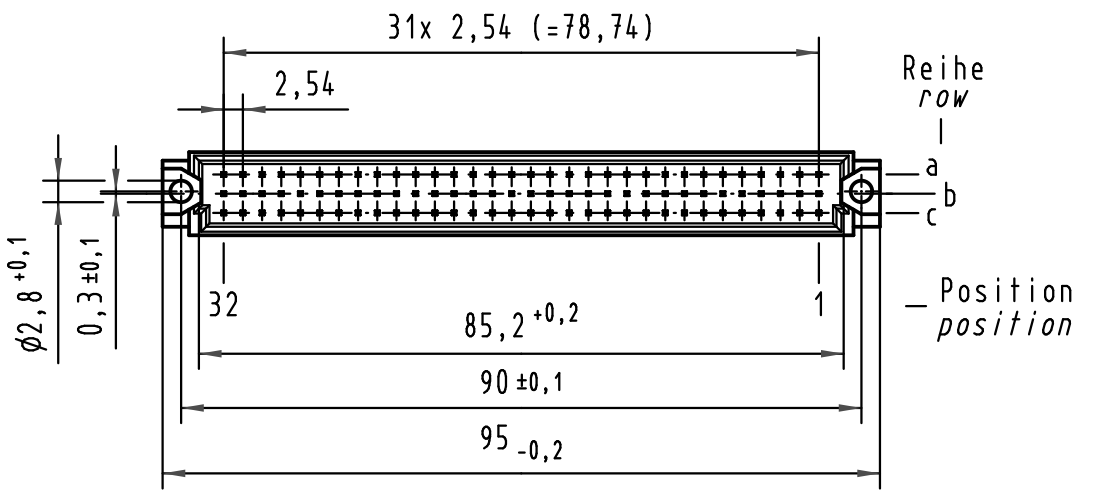
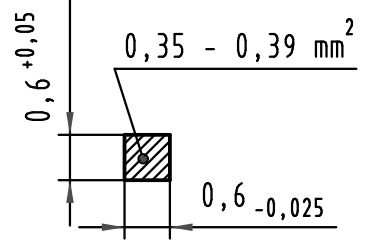


**X** Kontaktbelegung  
contact loading



**Z**  
10:1

Querschnitt der  
Lötanschlüsse:  
cross-section of  
solder terminations:



09 73 196 6577

2

Au flash over PdNi over Ni

09 73 196 2577

1

Au flash over PdNi over Ni

Bestell-Nr.  
part-no.

Anforderungsstufe nach IEC  
performance level acc. to IEC

Kontaktoberfläche  
contact plating

All Dimensions in mm Original Size DIN A 3			Techn. Character.			Nicht tolerierte Maß/Free size tolerances IEC 60603-2		
			Dat.	Name	Maßstab/Scale	Bauform R Messerleiste Einlöt WW 13 , 96pol. type R male connector solder ww 13 , 96pol.		
			Detail.	12.07.05 Hage.				
			Insp.	12.07.05 Ge.				
35548	22.07.09	Hage.	Stand.		10:1	<b>TB 09 73 196 x577</b>		
33870	07.09.06	LehT						
32937								
Mod.	Dat.	Name	HARTING Electronics GmbH & Co. KG D-32339 ESPELKAMP			Blatt/ page Sub.		

			Dat.	Name	Maßstab/Scale	Bauform R Messerleiste Einlöt WW 13 , 96pol. type R male connector solder ww 13 , 96pol.		
			Detail.	12.07.05 Hage.				
			Insp.	12.07.05 Ge.				
35548	22.07.09	Hage.	Stand.		10:1	<b>TB 09 73 196 x577</b>		
33870	07.09.06	LehT						
32937								
Mod.	Dat.	Name	HARTING Electronics GmbH & Co. KG D-32339 ESPELKAMP			Blatt/ page Sub.		

All Dimensions in mm Original Size DIN A 3			Techn. Character.			Nicht tolerierte Maß/Free size tolerances IEC 60603-2		
			Dat.	Name	Maßstab/Scale	Bauform R Messerleiste Einlöt WW 13 , 96pol. type R male connector solder ww 13 , 96pol.		
			Detail.	12.07.05 Hage.				
			Insp.	12.07.05 Ge.				
35548	22.07.09	Hage.	Stand.		10:1	<b>TB 09 73 196 x577</b>		
33870	07.09.06	LehT						
32937								
Mod.	Dat.	Name	HARTING Electronics GmbH & Co. KG D-32339 ESPELKAMP			Blatt/ page Sub.		

## X-ON Electronics

Largest Supplier of Electrical and Electronic Components

*Click to view similar products for [DIN 41612 Connectors](#) category:*

*Click to view products by [HARTING](#) manufacturer:*

Other Similar products are found below :

[09231126901](#) [PCN10F-24P-2.54DS\(72\)](#) [004.767](#) [02221602702](#) [024069](#) [602427301412000](#) [013275](#) [691327-1](#) [74670-0732](#) [74680-0340](#)  
[75880-0015](#) [76453-0014](#) [86093159ALF](#) [923454](#) [QLC260R](#) [120X10099X](#) [120X10019X](#) [120X10089X](#) [120X10129X](#) [121A10039X](#)  
[121A10309X](#) [122A10019X](#) [122A10029X](#) [122A10249X](#) [122A10669X](#) [122A11089X](#) [122A13089X](#) [121B10409X](#) [122A10089X](#)  
[122A10129X](#) [122A10349X](#) [122A13359X](#) [1377391-4](#) [DIN-048CPC-SR1-MH](#) [1393583-2](#) [1393726-7](#) [140X10059X](#) [140X10129X](#) [143-1913-](#)  
[000](#) [143-1908-000](#) [1484472-1](#) [173052](#) [2110070-1](#) [2110070-2](#) [CBC20T00-008FDS5-0-1-002VR](#) [983-0SE12-12P6](#) [17041102202](#) [172699-](#)  
[5036](#) [173051](#) [20](#) [8457096](#) [010](#) [025](#)