



DIN signal female connector angled



General information

Design	complementary to IEC 60603-2		types: M invers female
No. of contacts	78+2; 60+4; 42+6; 24+8; 6+10		
Contact spacing	2,54 mm for signal contacts		7,62 mm for special contacts
Test voltage	1000V		
Contact resistance	max. 20mOhm		
Insulation resistance	min. 10 ⁹ Ohm		
Working current	2A at 20°C (see derating diagram) for special contacts refer to corresponding data sheet		
Temperature range	-55°C ... +125°C		
Termination technology	solder pins		
Clearance & creepage distance	min. 1,2mm each		
Insertion and withdrawal force without special contacts	6pole max. 6N	42pole max. 40N	
	24pole max. 23N	60pole max. 57N	78pole max. 74N
Mating cycles	PL 1 acc. to IEC 60603-2		500 mating cycles
	PL 2 acc. to IEC 60603-2		400 mating cycles
	PL 3 acc. to IEC 60603-2		50 mating cycles
UL file	E102079		
RoHS - compliant	Yes		
Leadfree	Yes		
Hot plugging	No		

Insulator material

Material	PBT (thermoplastics, glass fiber reinforcement 30%)
Color	RAL 7032 (grey)
UL classification	UL 94-V0
Material group acc. IEC 60664-1	IIIa (175 ≤ CTI < 400)
NFF classification	I3, F4

Contact material

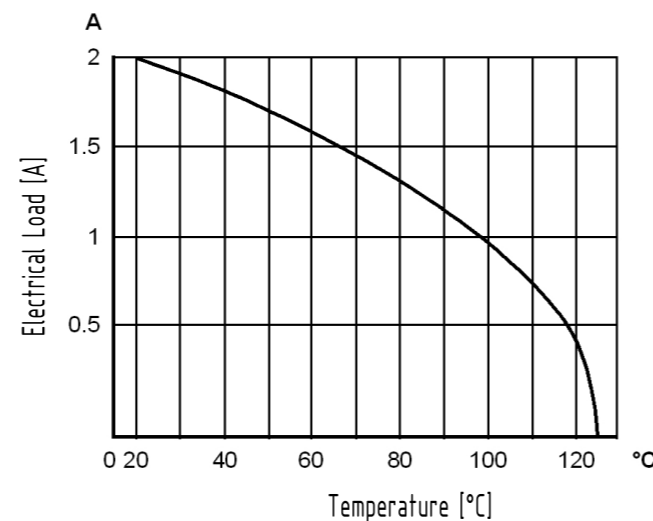
Contact material	Copper alloy
Plating termination zone	Sn over Ni
Plating contact zone	Au over Ni
Plating special contacts	refer to corresponding data sheet

Derating diagram acc. to IEC 60512-5 (Current carrying capacity)

The current carrying capacity is limited by maximum temperature of materials for inserts and contacts including terminals.

The current capacity curve is valid for continuous, non interrupted current loaded contacts of connectors when simultaneous power on all contacts is given, without exceeding the maximum temperature.

Control and test procedures according to DIN IEC 60512-5



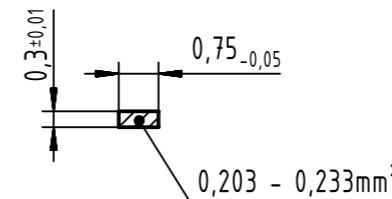
Assembly and soldering instructions

The connectors should be protected when being soldered in a dip, flow or film soldering baths. Otherwise, they might become contaminated as a result of soldering operations or deformed as a result of overheating.

(1) For prototypes and short runs protect the connectors with an industrial adhesive tape, e.g. Tesaband 4331 (www.tesa.de). Cover the underside of the connector moulding and the adjacent parts of the pcb as well as the open sides of the connector. This will prevent heat and gases of the soldering apparatus from damaging the connector. About 140 + 5 mm of the tape should suffice.

(2) For large series a jig is recommended. Its protective cover with a fast action mechanical locking device shields the connectors from gas and heat generated by the soldering apparatus. As an additional protection a foil can be used for covering the parts that should not be soldered.

Cross section of solder terminations



Special contacts

Compatible special contacts: only female special contacts acc. DIN 41626 T1 (Power) and male special contacts acc. DIN 41626 T2 (Coax)

	All Dimensions in mm Original Size DIN A3	Scale 1:1	Free size tol.	Ref. Sub. DS 09 73 220 02 03 Mod. A 2013-12-03	
	All rights reserved Department EC PD - DE	Created by KAHLERK	Inspected by TADJE	Standardisation HOFFMANN	Date 2014-08-01
HARTING Electronics GmbH D-32339 Espelkamp		Title DIN signal female connector angled			State Final Release
		Type DS	Number 09732200203	Doc-Key / ECM-Nr. 100580922/UGD/000/A 50000076060	Rev. A Page 1/1

X-ON Electronics

Largest Supplier of Electrical and Electronic Components

Click to view similar products for [DIN 41612 Connectors](#) category:

Click to view products by [HARTING](#) manufacturer:

Other Similar products are found below :

[004.767](#) [608489050008049](#) [691327-1](#) [74670-0732](#) [74680-0340](#) [75880-0015](#) [76453-0014](#) [86093159ALF](#) [9732967801](#) [QLC260R](#)
[120X10019X](#) [120X10089X](#) [122A10249X](#) [122A10669X](#) [122A11089X](#) [122A13089X](#) [122A10089X](#) [122A10129X](#) [122A10349X](#)
[122A13359X](#) [1377391-4](#) [DIN-048CPC-SR1-MH](#) [1393583-2](#) [1393726-7](#) [140X10129X](#) [143-1913-000](#) [143-1908-000](#) [1484472-1](#) [2110070-1](#)
[2110070-2](#) [CBC20T00-008FDS5-0-1-002VR](#) [172699-5036](#) [2-1393557-4](#) [2-1437084-2](#) [CTJ720E01B-6141](#) [394506](#) [419-2080-402](#)
[V42254B2202C968](#) [419-2086-201](#) [419-2087-002](#) [448657-1](#) [448847-3](#) [5-1393755-9](#) [02990000004](#) [054302](#) [043556](#) [09062483201750](#)
[0850033067](#) [09031646555](#) [09061486901840](#)