

Han® S 120 HBM w. MC M6 blue

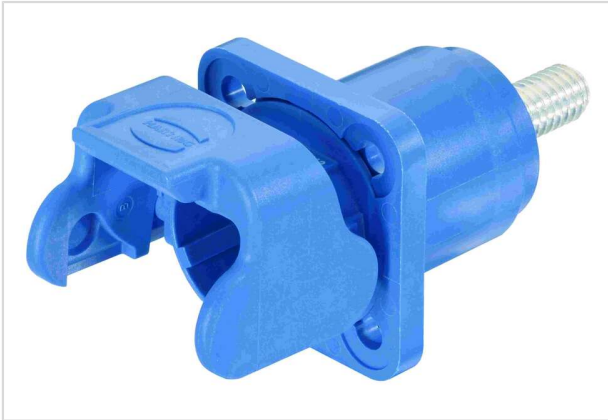


Image is for illustration purposes only. Please refer to product description.

Part number	09 93 001 1308
Specification	Han® S 120 HBM w. MC M6 blue
HARTING eCatalogue	https://b2b.harting.com/09930011308

Identification

Category	Hoods/Housings
Series	Han® S
Identification	Han® S 120
Type of hood/housing	Bulkhead mounted housing
Description of hood/housing	incl. male contact with M6 bolt termination

Version

Number of contacts	1
Locking type	Single locking lever
Field of application	Energy Storage Systems

Technical characteristics

Rated current	120 A
Rated voltage	1,500 V
Rated impulse voltage	8 kV
Pollution degree	2
Insulation resistance	$>10^8 \Omega$
Contact resistance	$\leq 0.3 \text{ m}\Omega$
Tightening torque	4 Nm
Limiting temperature	-40 ... +125 °C
Note on the limiting temperature	For use as a connector according to IEC 61984.
Number of relockings	≥ 500



Pushing Performance
 Since 1945

Technical characteristics

Degree of protection acc. to IEC 60529	IP40 mated condition IP20 unmated condition (1500 V DC; 1000 V AC)
--	---

Material properties

Material (contacts)	Copper alloy
Surface (contacts)	Silver plated
Material (hood/housing)	Polyamide (PA)
Colour (hood/housing)	RAL 5015 (sky blue)
Material flammability class acc. to UL 94	V-0
RoHS	compliant
ELV status	compliant
China RoHS	e
REACH Annex XVII substances	Not contained
REACH ANNEX XIV substances	Not contained
REACH SVHC substances	Not contained
California Proposition 65 substances	Not contained
Fire protection on railway vehicles	EN 45545-2 (2020-08)
Requirement set with Hazard Levels	R22 (HL 1-3) R23 (HL 1-3)

Specifications and approvals

Specifications	IEC 60664-1
	EN 45545-2 Fire protection on railway vehicles
	IEC 61984
	UL 1973
	UL 4128
	UL 9540
	UL 1977
CE	Yes

Commercial data

Packaging size	1
Net weight	25.3 g
Country of origin	China
European customs tariff number	85389099
GTIN	5713140183513



Pushing Performance
Since 1945

Commercial data

eCl@ss

27440202 Shell for industrial connectors

X-ON Electronics

Largest Supplier of Electrical and Electronic Components

Click to view similar products for [Heavy Duty Power Connectors](#) category:

Click to view products by [HARTING](#) manufacturer:

Other Similar products are found below :

[6646058-2](#) [6646137-1](#) [6646138-1](#) [6646940-1](#) [6651091-1](#) [6651525-1](#) [6651529-1](#) [696475-1](#) [702-32-01109](#) [73080255059](#) [73080965046](#)
[7310205040001](#) [765-16-0080B](#) [765-18-0080D](#) [902-77-02113](#) [PS00/A0620/6300](#) [AN0024023](#) [154-42B7WM250](#) [MS3117-14AC](#) [1643543-1](#)
[1766966-1](#) [1791340000](#) [NLDFT-3-BL-L-S120-M40A](#) [NLDFT-N-W-L-C240-M40B](#) [1926015-1](#) [NLS-3-BL-C240-M40B](#) [NLS-N-W-C240-](#)
[M40B](#) [NPS-3-BL-T6](#) [2-1589900-8](#) [9300480317](#) [294-0091-01100](#) [296-0040-01100](#) [1-6609148-0](#) [A32595-0049](#) [1766249-1](#) [19000005132](#)
[1926016-1](#) [1-966831-8](#) [AN0024202](#) [AN0264023](#) [279-0841-10100A](#) [281-0334-00100A](#) [RMSB4](#) [419-2083-301](#) [LCDX4/0-14B-X](#) [075-8519-](#)
[001](#) [078238-1613](#) [07.470.3256.0](#) [09000005288](#) [09140240311](#)