

## Han-Yellock module M-c, grey

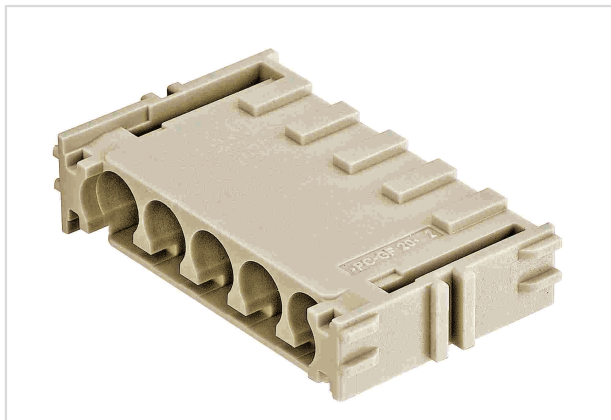


Image is for illustration purposes only. Please refer to product description.

|                    |   |
|--------------------|---|
| Part number        | 11 05 105 3001  |
| Specification      | Han-Yellock module M-c, grey  |
| HARTING eCatalogue | <a href="https://b2b.harting.com/11051053001">https://b2b.harting.com/11051053001</a> |

### Identification

|          |              |
|----------|--------------|
| Category | Inserts      |
| Series   | Han-Yellock® |
| Element  | Module       |

### Version

|                    |                   |
|--------------------|-------------------|
| Termination method | Crimp termination |
| Gender             | Male              |
| Number of contacts | 5                 |

### Technical characteristics

|                         |                            |
|-------------------------|----------------------------|
| Conductor cross-section | 0.14 ... 4 mm <sup>2</sup> |
| Rated current           | 20 A                       |
| Rated voltage           | 500 V                      |
| Rated impulse voltage   | 6 kV                       |
| Pollution degree        | 3                          |
| Insulation resistance   | >10 <sup>10</sup> Ω        |
| Contact resistance      | ≤2 mΩ                      |
| Limiting temperature    | -40 ... +125 °C            |
| Mating cycles           | ≥500                       |

### Material properties

|                   |                        |
|-------------------|------------------------|
| Material (insert) | Polycarbonate (PC)     |
| Colour (insert)   | RAL 7032 (pebble grey) |



Pushing Performance

## Material properties

|   |               |
|---|---------------|
| Material (contacts)                       | Copper alloy  |
| Surface (contacts)                        | Silver plated |
| Material flammability class acc. to UL 94 | V-0           |
| RoHS                                      | compliant     |
| ELV status                                | compliant     |
| China RoHS                                | e             |
| REACH Annex XVII substances               | Not contained |
| REACH ANNEX XIV substances                | Not contained |
| REACH SVHC substances                     | Not contained |

## Specifications and approvals

|                |                         |
|----------------|-------------------------|
| Specifications | EN 60664-1<br>IEC 61984 |
| Approvals      | DNV GL                  |

## Commercial data

|                                |   |
|--------------------------------|---|
| Packaging size                 | 1   |
| Net weight                     | 6.5 g   |
| Country of origin              | Germany   |
| European customs tariff number | 85389099  |
| eCl@ss                         | 27440205 Contact insert for industrial connectors |

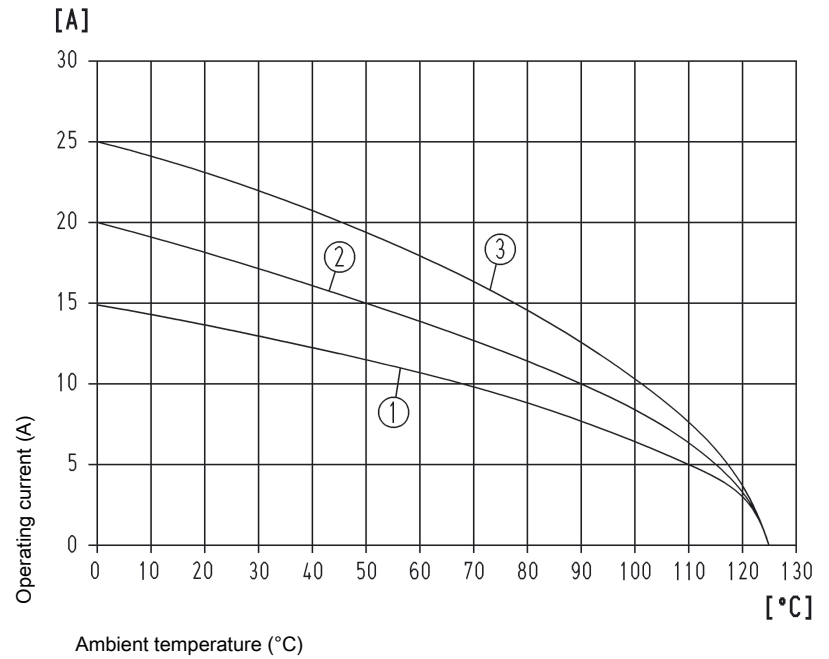


Pushing Performance

### Current carrying capacity

The current carrying capacity of the connectors is limited by the thermal load capability of the contact element material including the connections and the insulating parts. The derating curve is therefore valid for currents which flow constantly (non-intermittent) through each contact element of the connector evenly, without exceeding the allowed maximum temperature.

Measuring and testing techniques acc. to IEC 60512-5-2



- ① Conductor cross-section 1.5 mm<sup>2</sup>
- ② Conductor cross-section 2.5 mm<sup>2</sup>
- ③ Conductor cross-section 4 mm<sup>2</sup>

for connector with 3 Han-Yellock<sup>®</sup> modules, fully loaded (multiplier 1:1)

## X-ON Electronics

Largest Supplier of Electrical and Electronic Components

*Click to view similar products for [Heavy Duty Power Connectors](#) category:*

*Click to view products by [HARTING](#) manufacturer:*

Other Similar products are found below :

[647757-1](#) [6643411-1](#) [6646058-2](#) [6646137-1](#) [6646138-1](#) [6646479-1](#) [6646608-1](#) [6646786-1](#) [6646940-1](#) [6651091-1](#) [6651525-1](#) [6651529-1](#)  
[6651788-1](#) [696475-1](#) [73000005059](#) [73000005642](#) [765-15-0080A](#) [765-16-0080B](#) [829992-1](#) [902-77-02113](#) [129-1J](#) [AN0024023](#) [E6374G1](#)  
[e6389g2](#) [157-43GW8](#) [MS3117-14AC](#) [1643543-1](#) [1650540-1](#) [1651811-2](#) [1766260-1](#) [1766282-1](#) [1766966-1](#) [1791340000](#) [NLDFT-3-BL-L-](#)  
[S120-M40A](#) [NLDFT-N-W-L-C240-M40B](#) [NLS-2-R-C240-M40B](#) [NLS-N-W-C240-M40B](#) [NPS-3-BL-T6](#) [1986615-1](#) [2-1589900-8](#) [2199314-1](#)  
[KA8102](#) [9300480317](#) [SBS50BRN#6](#) [29131](#) [29652](#) [1646905-1](#) [1648320-1](#) [1648582-1](#) [1650195-2](#)