

## YELLOCK MONOBLOCK 60 MALE

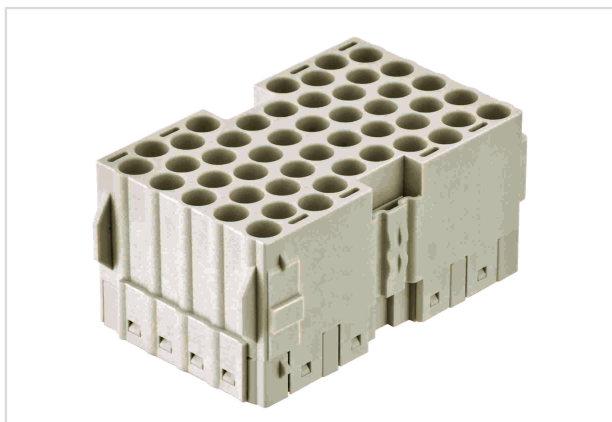


Image is for illustration purposes only. Please refer to product description.

|                    |   |
|--------------------|---|
| Part number        | 11 05 648 3001  |
| Specification      | YELLOCK MONOBLOCK 60 MALE   |
| HARTING eCatalogue | <a href="https://b2b.harting.com/11056483001">https://b2b.harting.com/11056483001</a> |

### Identification

|          |              |
|----------|--------------|
| Category | Inserts      |
| Series   | Han-Yellock® |
| Element  | Monoblock    |

### Version

|                    |   |
|--------------------|---|
| Termination method | Crimp termination                       |
| Gender             | Male                                    |
| Size               | Han-Yellock® 60                         |
| Number of contacts | 48                                      |
| Details            | Please order crimp contacts separately. |

### Technical characteristics

|                         |                            |
|-------------------------|----------------------------|
| Conductor cross-section | 0.14 ... 4 mm <sup>2</sup> |
| Rated current           | 16 A                       |
| Rated voltage           | 500 V                      |
| Rated impulse voltage   | 6 kV                       |
| Pollution degree        | 3                          |
| Insulation resistance   | >10 <sup>10</sup> Ω        |
| Limiting temperature    | -40 ... +125 °C            |
| Mating cycles           | ≥500                       |

### Material properties

|                   |                    |
|-------------------|--------------------|
| Material (insert) | Polycarbonate (PC) |
|-------------------|--------------------|



Pushing Performance

## Material properties

|   |                        |
|---|------------------------|
| Colour (insert)                           | RAL 7032 (pebble grey) |
| Material flammability class acc. to UL 94 | V-0                    |
| RoHS                                      | compliant              |
| ELV status                                | compliant              |
| China RoHS                                | e                      |
| REACH Annex XVII substances               | Not contained          |
| REACH ANNEX XIV substances                | Not contained          |
| REACH SVHC substances                     | Not contained          |

## Specifications and approvals

|                |                         |
|----------------|-------------------------|
| Specifications | EN 60664-1<br>IEC 61984 |
| Approvals      | DNV GL                  |
| UL / CSA       | UL 1977 ECBT2.E235076   |

## Commercial data

|                                |   |
|--------------------------------|---|
| Packaging size                 | 1   |
| Net weight                     | 40.4 g  |
| Country of origin              | Germany   |
| European customs tariff number | 85389099  |
| eCl@ss                         | 27440205 Contact insert for industrial connectors |

## X-ON Electronics

Largest Supplier of Electrical and Electronic Components

*Click to view similar products for [Heavy Duty Power Connectors](#) category:*

*Click to view products by [HARTING](#) manufacturer:*

Other Similar products are found below :

[647757-1](#) [6643411-1](#) [6646058-2](#) [6646137-1](#) [6646138-1](#) [6646479-1](#) [6646608-1](#) [6646786-1](#) [6646940-1](#) [6651091-1](#) [6651525-1](#) [6651529-1](#)  
[6651788-1](#) [696475-1](#) [73000005059](#) [73000005642](#) [765-15-0080A](#) [765-16-0080B](#) [829992-1](#) [902-77-02113](#) [129-1J](#) [AN0024023](#) [E6374G1](#)  
[e6389g2](#) [157-43GW8](#) [MS3117-14AC](#) [1643543-1](#) [1650540-1](#) [1651811-2](#) [1766260-1](#) [1766282-1](#) [1766966-1](#) [1791340000](#) [NLDFT-3-BL-L-](#)  
[S120-M40A](#) [NLDFT-N-W-L-C240-M40B](#) [NLS-2-R-C240-M40B](#) [NLS-N-W-C240-M40B](#) [NPS-3-BL-T6](#) [1986615-1](#) [2-1589900-8](#) [2199314-1](#)  
[KA8102](#) [9300480317](#) [SBS50BRN#6](#) [29131](#) [29652](#) [1646905-1](#) [1648320-1](#) [1648582-1](#) [1650195-2](#)