

Han-Yellock 60 HSM 2xM40

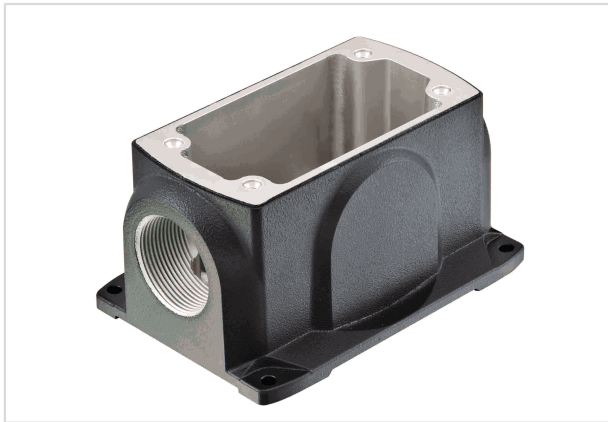


Image is for illustration purposes only. Please refer to product description.

| | |
|--------------------|---|
| Part number | 11 12 600 1207 |
| Specification | Han-Yellock 60 HSM 2xM40 |
| HARTING eCatalogue | https://b2b.harting.com/11126001207 |

Identification

| | |
|--------------------------|-------------------------|
| Category | Hoods/Housings |
| Series of hoods/housings | Han-Yellock® |
| Type of hood/housing | Surface mounted housing |

Version

| | |
|----------------------|--|
| Size | Han-Yellock® 60 |
| Version | Side entry |
| Cable entry | 2x M40 |
| Locking type | Screw locking |
| Field of application | Hoods/housings for industrial applications |

Technical characteristics

| | |
|--|-----------------|
| Limiting temperature | -40 ... +125 °C |
| Un-/locking temperature | -10 ... +85 °C |
| Degree of protection acc. to IEC 60529 | IP65 IP67 |

Material properties

| | |
|---|-----------------------|
| Material (hood/housing) | Zinc die-cast |
| Surface (hood/housing) | Powder-coated |
| Colour (hood/housing) | RAL 7021 (black grey) |
| Material (seal) | NBR |
| Material flammability class acc. to UL 94 | V-0 |



Pushing Performance

Material properties

| | |
|--------------------------------------|---------------|
| RoHS | compliant |
| ELV status | compliant |
| China RoHS | e |
| REACH Annex XVII substances | Not contained |
| REACH ANNEX XIV substances | Not contained |
| REACH SVHC substances | Not contained |
| California Proposition 65 substances | Yes |
| California Proposition 65 substances | Nickel |

Specifications and approvals

| | |
|----------------|-------------------------|
| Specifications | EN 60664-1 IEC 61984 |
| Approvals | DNV GL |
| CE | Yes |

Commercial data

| | |
|--------------------------------|--|
| Packaging size | 1 |
| Net weight | 446.5 g |
| Country of origin | China |
| European customs tariff number | 85389099 |
| eCl@ss | 27440202 Shell for industrial connectors |

X-ON Electronics

Largest Supplier of Electrical and Electronic Components

Click to view similar products for [Heavy Duty Power Connectors](#) category:

Click to view products by [HARTING](#) manufacturer:

Other Similar products are found below :

[647757-1](#) [6643411-1](#) [6646058-2](#) [6646137-1](#) [6646138-1](#) [6646479-1](#) [6646608-1](#) [6646786-1](#) [6646940-1](#) [6651091-1](#) [6651525-1](#) [6651529-1](#)
[6651788-1](#) [696475-1](#) [73000005059](#) [73000005642](#) [765-15-0080A](#) [765-16-0080B](#) [829992-1](#) [902-77-02113](#) [129-1J](#) [AN0024023](#) [E6374G1](#)
[e6389g2](#) [157-43GW8](#) [MS3117-14AC](#) [1643543-1](#) [1650540-1](#) [1651811-2](#) [1766260-1](#) [1766282-1](#) [1766966-1](#) [1791340000](#) [NLDFT-3-BL-L-](#)
[S120-M40A](#) [NLDFT-N-W-L-C240-M40B](#) [NLS-2-R-C240-M40B](#) [NLS-N-W-C240-M40B](#) [NPS-3-BL-T6](#) [1986615-1](#) [2-1589900-8](#) [2199314-1](#)
[KA8102](#) [9300480317](#) [SBS50BRN#6](#) [29131](#) [29652](#) [1646905-1](#) [1648320-1](#) [1648582-1](#) [1650195-2](#)