

## Han 24HPR-HSM angled-M50-Screw Lock

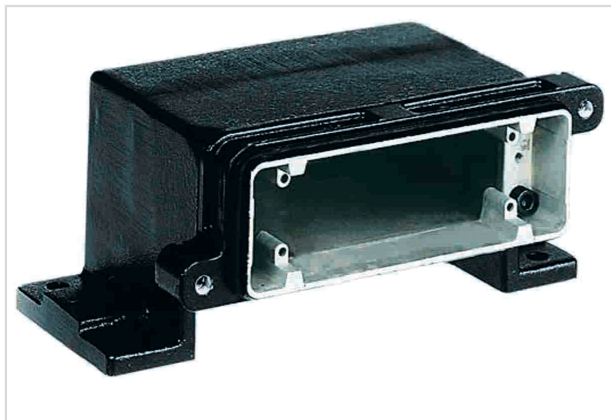


Image is for illustration purposes only. Please refer to product description.

|                    |   |
|--------------------|---|
| Part number        | 19 40 024 0914  |
| Specification      | Han 24HPR-HSM angled-M50-Screw Lock   |
| HARTING eCatalogue | <a href="https://b2b.harting.com/19400240914">https://b2b.harting.com/19400240914</a> |

### Identification

|                             |                         |
|-----------------------------|-------------------------|
| Category                    | Hoods/Housings          |
| Series of hoods/housings    | Han® HPR                |
| Type of hood/housing        | Surface mounted housing |
| Description of hood/housing | Horizontal version      |

### Version

|                      |   |
|----------------------|---|
| Size                 | 24 B  |
| Version              | Top entry                                     |
| Cable entry          | 1x M50  |
| Locking type         | Screw locking                                 |
| Field of application | Hoods/housings for harsh outdoor environments |

### Technical characteristics

|  |  |
|--|--|
| Tightening torque (screw locking)      | 4 Nm   |
| Limiting temperature                   | -40 ... +125 °C                                |
| Degree of protection acc. to IEC 60529 | IP65<br>IP68<br>IP69 / IPX9K acc. to ISO 20653 |
| Type rating acc. to UL 50 / UL 50E     | 4<br>4X<br>12                                  |

### Material properties

|                         |   |
|-------------------------|---|
| Material (hood/housing) | Aluminium die-cast<br>Corrosion resistant |
|-------------------------|---|



Pushing Performance

## Material properties

|                                      |                       |
|--------------------------------------|-----------------------|
| Surface (hood/housing)               | Powder-coated         |
| Colour (hood/housing)                | RAL 9005 (jet black)  |
| Material (seal)                      | NBR                   |
| Material (locking)                   | Stainless steel       |
| RoHS                                 | compliant             |
| ELV status                           | compliant             |
| China RoHS                           | e                     |
| REACH Annex XVII substances          | Not contained         |
| REACH ANNEX XIV substances           | Not contained         |
| REACH SVHC substances                | Not contained         |
| California Proposition 65 substances | Yes                   |
| California Proposition 65 substances | Nickel<br>Naphthalene |

## Specifications and approvals

|           |  |
|-----------|--|
| Approvals | DNV GL   |
| UL / CSA  | UL 1977 ECBT2.E235076<br>CSA-C22.2 No. 182.3 ECBT8.E235076 |
| CE        | Yes  |

## Commercial data

|                                |  |
|--------------------------------|--|
| Packaging size                 | 1  |
| Net weight                     | 1,245 g                                  |
| Country of origin              | Germany                                  |
| European customs tariff number | 85389099                                 |
| eCl@ss                         | 27440202 Shell for industrial connectors |

## X-ON Electronics

Largest Supplier of Electrical and Electronic Components

*Click to view similar products for [Heavy Duty Power Connectors](#) category:*

*Click to view products by [HARTING](#) manufacturer:*

Other Similar products are found below :

[647757-1](#) [6643411-1](#) [6646058-2](#) [6646137-1](#) [6646138-1](#) [6646479-1](#) [6646608-1](#) [6646786-1](#) [6646940-1](#) [6651091-1](#) [6651525-1](#) [6651529-1](#)  
[6651788-1](#) [696475-1](#) [73000005059](#) [73000005642](#) [765-15-0080A](#) [765-16-0080B](#) [829992-1](#) [902-77-02113](#) [129-1J](#) [AN0024023](#) [E6374G1](#)  
[e6389g2](#) [157-43GW8](#) [MS3117-14AC](#) [1643543-1](#) [1650540-1](#) [1651811-2](#) [1766260-1](#) [1766282-1](#) [1766966-1](#) [1791340000](#) [NLDFT-3-BL-L-](#)  
[S120-M40A](#) [NLDFT-N-W-L-C240-M40B](#) [NLS-2-R-C240-M40B](#) [NLS-N-W-C240-M40B](#) [NPS-3-BL-T6](#) [1986615-1](#) [2-1589900-8](#) [2199314-1](#)  
[KA8102](#) [9300480317](#) [SBS50BRN#6](#) [29131](#) [29652](#) [1646905-1](#) [1648320-1](#) [1648582-1](#) [1650195-2](#)