

Han-Eco Mod.-PE multiplier, max. 8

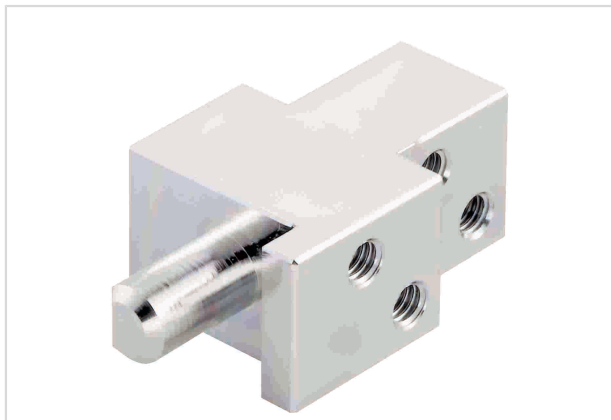


Image is for illustration purposes only. Please refer to product description.

Part number	19 41 000 9999
Specification	Han-Eco Mod.-PE multiplier, max. 8
HARTING eCatalogue	https://b2b.harting.com/19410009999

Identification

Category	Modules
Series	Han-Eco® Modular
Type of accessory	PE Multiple ground connection
Description of the accessory	Up to 8 contacts

Version

Gender	Male Female
--------	----------------

Technical characteristics

Conductor cross-section	0.5 ... 6 mm ² with cable shoe M4 (total max. 25 mm ²)
Limiting temperature	-40 ... +125 °C
Mating cycles	≥500

Material properties

RoHS	compliant with exemption
RoHS exemptions	6(c): Copper alloy containing up to 4 % lead by weight
ELV status	compliant with exemption
China RoHS	50
REACH Annex XVII substances	Not contained
REACH ANNEX XIV substances	Not contained
REACH SVHC substances	Yes
REACH SVHC substances	Lead



Pushing Performance

Material properties

California Proposition 65 substances	Yes
California Proposition 65 substances	Nickel
	Lead

Specifications and approvals

Specifications	IEC 61984
----------------	-----------

Commercial data

Packaging size	10
Net weight	59 g
Country of origin	Germany
European customs tariff number	85389099
eCl@ss	27440392 Connector (accessories)

X-ON Electronics

Largest Supplier of Electrical and Electronic Components

Click to view similar products for [Heavy Duty Power Connectors](#) category:

Click to view products by [HARTING](#) manufacturer:

Other Similar products are found below :

[647757-1](#) [6643411-1](#) [6646058-2](#) [6646137-1](#) [6646138-1](#) [6646479-1](#) [6646608-1](#) [6646786-1](#) [6646940-1](#) [6651091-1](#) [6651525-1](#) [6651529-1](#)
[6651788-1](#) [696475-1](#) [73000005059](#) [73000005642](#) [765-15-0080A](#) [765-16-0080B](#) [829992-1](#) [902-77-02113](#) [129-1J](#) [AN0024023](#) [E6374G1](#)
[e6389g2](#) [157-43GW8](#) [MS3117-14AC](#) [1643543-1](#) [1650540-1](#) [1651811-2](#) [1766260-1](#) [1766282-1](#) [1766966-1](#) [1791340000](#) [NLDFT-3-BL-L-](#)
[S120-M40A](#) [NLDFT-N-W-L-C240-M40B](#) [NLS-2-R-C240-M40B](#) [NLS-N-W-C240-M40B](#) [NPS-3-BL-T6](#) [1986615-1](#) [2-1589900-8](#) [2199314-1](#)
[KA8102](#) [9300480317](#) [SBS50BRN#6](#) [29131](#) [29652](#) [1646905-1](#) [1648320-1](#) [1648582-1](#) [1650195-2](#)