

Current Sensor HCME 100A-0-00-CDA-T

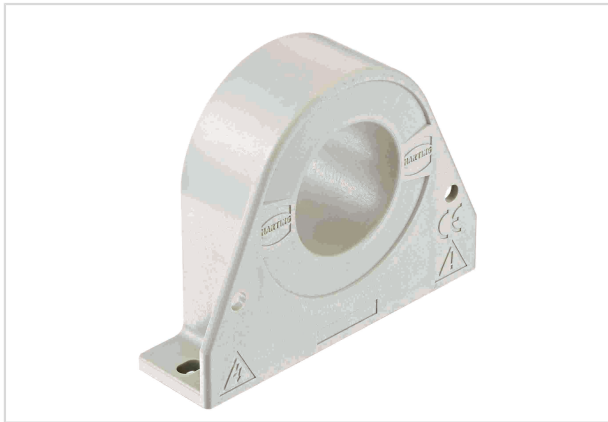


Image is for illustration purposes only. Please refer to product description.

Part number	20 32 010 0101
Specification	Current Sensor HCME 100A-0-00-CDA-T
HARTING eCatalogue	https://b2b.harting.com/20320100101

Identification

Category	Current measurement
Series	HCME
Element	Current sensor
Sensor technology	Hall-Effekt Open loop
Features	Measurable currents: AC, DC, pulsed, mixed ... Galvanic insulation between primary and secondary current Switchboard mounting Housing material and potting mass have a flammability rating UL 94 V-0 Applications: frequency converters, electrical drives, auxiliary converters

Version

Termination	Metz Typ 320 (PT11504VBBN)
Field of application	Industrial version
Pack contents	Counter connector included

Technical characteristics

I_{PN} Nominal primary current	100 A
I_{PM} Primary current, measuring range	0 ... ± 300 A
U_C Power supply	± 15 V ± 5 %
U_{OUT} Output voltage @ I_{PN}	4 V
R_L Load resistance	>1 k Ω
I_C Current consumption @ $U_{C \min}$	25 mA



Pushing Performance

Technical characteristics

R _{IN} Insulation resistance	>500,000 kΩ
X Overall accuracy @ I _{PN} , T _A = 25 °C	±1 %
E _L Linearity	<0.5 %
U _O Offset voltage @ I _P = 0 A, T _A = 25 °C	±10 mV
U _{OO} L Offset after I _{Pmax}	±10 mV
U _{OT} maximum temperature drift of U _O	±1 mV/K
U _{outT} thermal gain drift	± 0,05 %/K
t _r Response time @ I _{PN}	<3 μs
di/dt with optimal coupling	>50 A/μs
f Frequency	0 ... 50 kHz
T _A Ambient temperature	-25 ... +85 °C
T _S Storage temperature	-25 ... +90 °C
U _D Test voltage, effective (50 Hz, 1 min)	3.5 kV Primary - secondary
U _B Rated voltage	690 V
L _S Clearance distance	22.7 mm
K _S Creepage distance	36.6 mm
Tightening torque	3.2 Nm (2x steel screw M4 - Vertical)

Material properties

Material (hood/housing)	Polycarbonate (PC)
Material flammability class acc. to UL 94	V-0
RoHS	compliant
ELV status	compliant
China RoHS	e
REACH Annex XVII substances	Not contained
REACH ANNEX XIV substances	Not contained
REACH SVHC substances	Not contained

Specifications and approvals

Specifications	EN 50178 IEC 61373
----------------	-----------------------

Specifications and approvals

Approvals	DNV GL
UL / CSA	UL 508 NMTR2.E359667 CSA-C22.2 No. 14-13 NMTR8.E359667

Commercial data

Packaging size	1
Net weight	204 g
Country of origin	Germany
European customs tariff number	90303370
eCl@ss	27210902 Current transformer

Remark

- If I_P flows in the direction of the arrow I_S is positive.
- Over currents ($\gg I_{PN}$) or the missing of the supply voltage can cause an additional permanent magnetic offset.
- The temperature of the primary conductor may not exceed 100 °C.

Safety note



These transformers may only be used in electrical or power electronic applications which fulfill the relevant regulations (standards, EMC requirements,...).

This transformer must be used in limited-energy secondary circuits according to IEC 61010-1.

Caution, risk of electric shock



- Pay attention to protect non-insulated high-power current carrying parts against direct contact (e.g. with a protective enclosure).
- When installing this sensor please make sure that the safe separation (between primary circuit and secondary circuit) is maintained over the whole circuits and their connections.
- The sensor may only be connected to a power supply respecting the SELV/PELV protective regulations according to EN 50 178. The installation of the power supply must be short-circuit-proof.
- Disconnecting the main power must be possible.
- The current sensors support a safe separation. The creepage and clearance distances are taken as a basis for the rated voltage. They are the shortest distance between the secondary connection and the sensor's window. The actual clearance and creepage distances depend on the position of the primary conductor respectively on the actual shortest distance between the primary conductor and the secondary connection.

X-ON Electronics

Largest Supplier of Electrical and Electronic Components

Click to view similar products for [Industrial Current Sensors](#) category:

Click to view products by [HARTING](#) manufacturer:

Other Similar products are found below :

[CSNS181](#) [CSNS300M-001](#) [5SHT-151-E](#) [7SHT-301-E](#) [SAO-Q1N](#) [SAO-Q2N](#) [CSCA0075A000U12J01](#) [SAO-S1N](#) [BB-JC36S500-V](#) [BB-JC10F50-V](#) [BB-JC24S250-V](#) [CSNS300M-500](#) [LA200-P](#) [ACS724LLCTR-10AB-T](#) [LPMG12](#) [DCSA50](#) [ECS40BC](#) [A-CS010B](#) [A-CS050B](#) [A-CS100B](#) [A-CS200B](#) [CS010GT12](#) [CS030EK1](#) [CS050B](#) [CS050BT12](#) [CS100B](#) [CS200B](#) [CS200BKT5](#) [CS200BT24](#) [CS300B](#) [CS400B](#) [CS600B](#) [CSM006NPT3.3](#) [CSM010PST5](#) [CSM010SYA](#) [CSM015NPT5](#) [CSM015SY](#) [CSM025AY](#) [CSM050LA/50mA](#) [CSM100AP/1:2000](#) [CSM100LA/50mA](#) [DS050LTA](#) [CC6903SO-30A](#) [CC6903SO-20A](#) [CC6904SO-20A](#) [20310200101](#) [20310200102](#) [20310500101](#) [20311000101](#) [CSCA0050A000B15B01](#)