

M12 panel feed through/PCB angled D-code

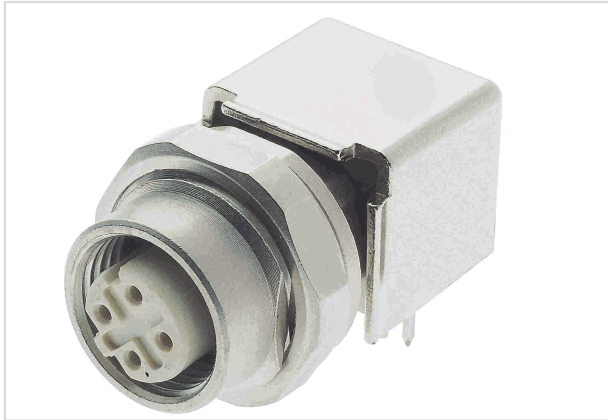


Image is for illustration purposes only. Please refer to product description.

| | |
|--------------------|---|
| Part number | 21 03 381 4410 |
| Specification | M12 panel feed through/PCB angled D-code |
| HARTING eCatalogue | https://b2b.harting.com/21033814410 |

Identification

| | |
|---------------|-----------------------------|
| Category | Connectors |
| Series | Circular connectors M12 |
| Element | PCB adapter |
| Specification | Angled for rear mounting |

Version

| | |
|--------------------|--|
| Termination method | Reflow soldering termination (THR) |
| Gender | Female |
| Shielding | Shielded |
| Number of contacts | 4 |
| Coding | D-coding |
| Locking type | Screw locking |
| Details | Coding bottom left = Cable entry direction on the angled connector: to the right |

Technical characteristics

| | |
|------------------------------|------------------------------|
| Rated current | 4 A |
| Rated voltage | 50 V |
| Rated impulse voltage | 1.5 kV |
| Pollution degree | 3 |
| Transmission characteristics | Cat. 5 Class D up to 100 MHz |
| Overvoltage category | III |
| Data rate | 10 Mbit/s 100 Mbit/s |



Pushing Performance

Technical characteristics

| | |
|--|--------------------|
| Insulation resistance | >10 ⁸ Ω |
| Contact resistance | ≤10 mΩ |
| Tightening torque | 2 Nm Lock nut |
| Ambient temperature | -40 ... +85 °C |
| Mating cycles | ≥100 |
| Degree of protection acc. to IEC 60529 | IP20 |
| Isolation group | I (600 ≤ CTI) |

Material properties

| | |
|---|--|
| Material (insert) | Liquid crystal polymer (LCP) |
| Material (contacts) | Copper alloy |
| Surface (contacts) | Au over Ni Mating side |
| Material (hood/housing) | Zinc die-cast |
| Material flammability class acc. to UL 94 | V-0 |
| RoHS | compliant with exemption |
| RoHS exemptions | 6(c): Copper alloy containing up to 4 % lead by weight |
| ELV status | compliant with exemption |
| China RoHS | 50 |
| REACH Annex XVII substances | Not contained |
| REACH ANNEX XIV substances | Not contained |
| REACH SVHC substances | Yes |
| REACH SVHC substances | Lead |
| ECHA SCIP number | 0d7d3693-d625-47ab-934a-d241bf72c86e |
| California Proposition 65 substances | Yes |
| California Proposition 65 substances | Nickel Lead |

Specifications and approvals

| | |
|----------------|--|
| Specifications | IEC 61076-2-101 |
| UL / CSA | UL 1977 ECBT2.E235076 CSA-C22.2 No. 182.3 ECBT8.E235076 |
| PROFINET | Yes |



Pushing Performance

Commercial data

| | |
|--------------------------------|--|
| Packaging size | 10 |
| Net weight | 2 g |
| Country of origin | Romania |
| European customs tariff number | 85366990 |
| eCl@ss | 27460201 PCB connector (board connector) |

X-ON Electronics

Largest Supplier of Electrical and Electronic Components

Click to view similar products for [Circular Metric Connectors](#) category:

Click to view products by [HARTING](#) manufacturer:

Other Similar products are found below :

[600X518037X](#) [6STD15PCR99B70A](#) [8R4000A16M020](#) [8R5000A16M005](#) [1200910002](#) [1203580030](#) [1200910008](#) [1200910011](#) [1300140094](#)
[130203-0054](#) [1300140026](#) [1300150099](#) [1-3637-600-5205](#) [1612618](#) [21036836414](#) [8R4006A16M010](#) [1R3006A20M005](#) [41-40011](#) [42-00006](#)
[42-01015](#) [4-22279-4](#) [4-22281-1](#) [4-22284-9](#) [43-00113](#) [43-01203](#) [41-40013](#) [42-00008](#) [43-00343](#) [43-01026](#) [43-01162](#) [43-01173](#) [43-10000](#)
[XS3P-M421-2](#) [600X518050X](#) [8R5006A16M020](#) [8R5006A16M005](#) [8R4000A16M010](#) [6-22279-3](#) [1605332](#) [N03FA03144](#) [1300140077](#) [43-](#)
[16213](#) [43-01338](#) [XS2RD4265](#) [XS2R-D426-1](#) [XS8A-0441](#) [859RD04-103R004](#) [860RD04-113R004](#) [860RD04-213R004](#) [1-213245-2](#)