

HD D-sub 78P MALE CONNECTOR
C1

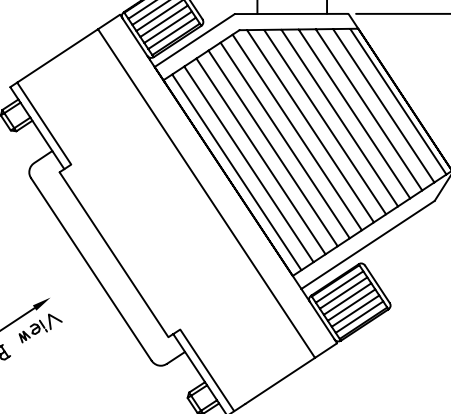
Adhesive tube.

CWK/YR-XXXXX-X-XX
33 56 21X XXX 00XX

LABEL

39P×26AWG HF DOUBLE SHIELDED CABLE

Adhesive tube



HD D-sub 78P MALE CONNECTOR
C2

WIRING TABLE

PAIR NO	C1	C2	PAIR NO	C1	C2	PAIR NO	C1	C2
1	1	1	14	27	27	27	53	53
2	2	2	15	28	28	28	54	54
3	3	3	16	29	29	29	55	55
4	4	4	17	30	30	30	56	56
5	5	5	18	31	31	31	57	57
6	6	6	19	32	32	32	58	58
7	7	7	20	33	33	33	59	59
8	8	8	21	34	34	34	60	60
9	9	9	22	35	35	35	61	61
10	10	10	23	36	36	36	62	62
11	11	11	24	37	37	37	63	63
12	12	12	25	38	38	38	64	64
13	13	13	26	39	39	39	65	65
14	14	14		40	40		66	66
15	15	15		41	41		67	67
16	16	16		42	42		68	68
17	17	17		43	43		69	69
18	18	18		44	44		70	70
19	19	19		45	45		71	71
20	20	20		46	46		72	72
21	21	21		47	47		73	73
22	22	22		48	48		74	74
23	23	23		49	49		75	75
24	24	24		50	50		76	76
25	25	25		51	51		77	77
26	26	26		52	52		78	78
							Shell	Shell

NOTES:

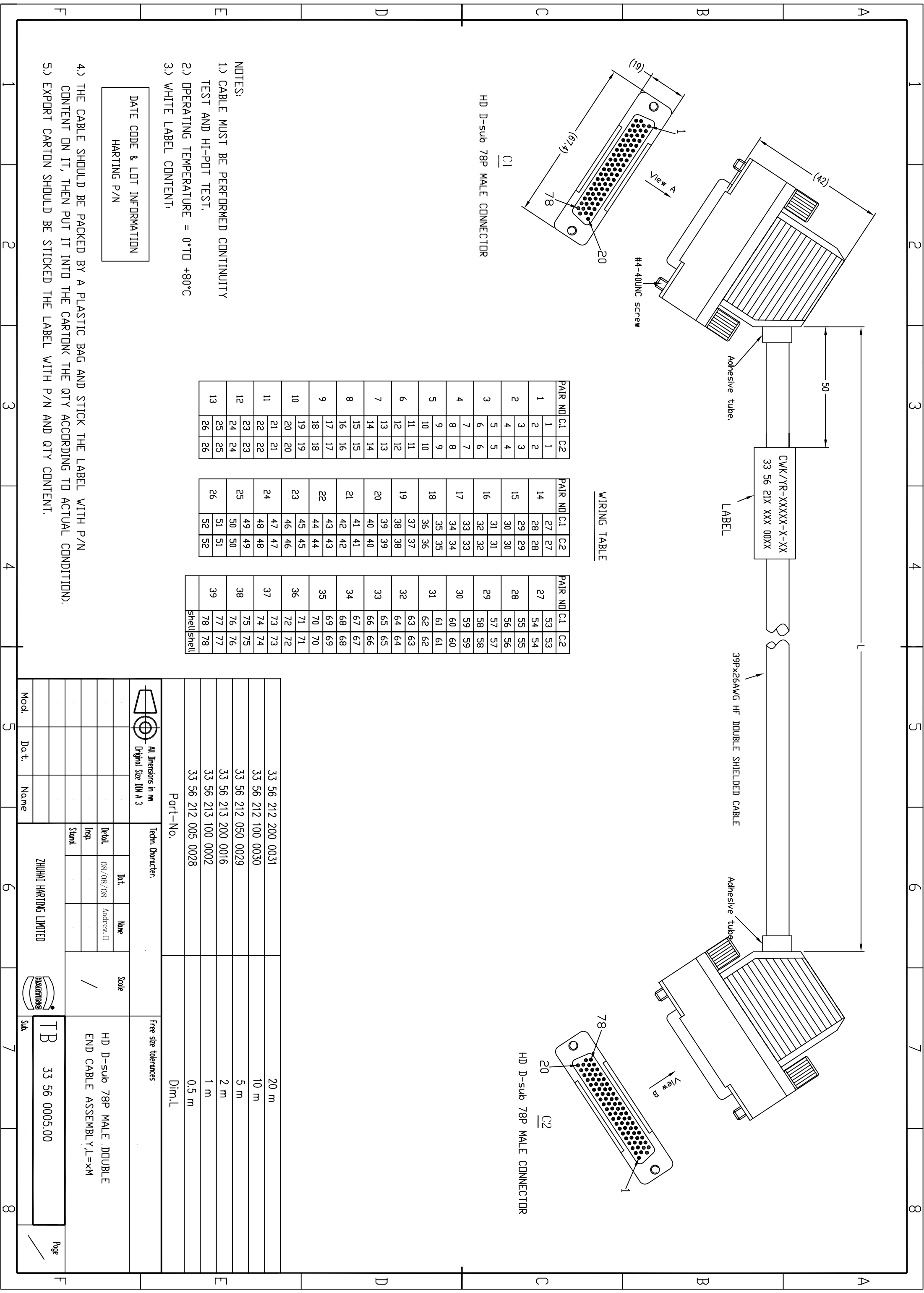
- 1.) CABLE MUST BE PERFORMED CONTINUITY TEST AND HI-POT TEST.
- 2.) OPERATING TEMPERATURE = 0°TD +80°C
- 3.) WHITE LABEL CONTENT:

DATE CODE & LOT INFORMATION
HARTING P/N

- 4.) THE CABLE SHOULD BE PACKED BY A PLASTIC BAG AND STICK THE LABEL WITH P/N CONTENT ON IT, THEN PUT IT INTO THE CARTON THE QTY ACCORDING TO ACTUAL CONDITION.
- 5.) EXPORT CARTON SHOULD BE STICKED THE LABEL WITH P/N AND QTY CONTENT.

<p>All Dimensions in mm Original Size DIN A 3</p>		<p>Techn. Character.</p>		<p>Free size tolerances</p>	
Mod.	Da.t.	Name	Part-No.	Dim.L	
			33 56 212 200 0031	20 m	
			33 56 212 100 0030	10 m	
			33 56 212 050 0029	5 m	
			33 56 213 200 0016	2 m	
			33 56 213 100 0002	1 m	
			33 56 212 005 0028	0.5 m	

<p>Scale</p>		<p>Detail</p>		<p>Insp.</p>		<p>Stand.</p>	
<p>ZHUHAI HARTING LIMITED</p>		<p>08/08/08 Andrew H</p>		<p></p>		<p></p>	
<p>TB</p>		<p>33 56 0005.00</p>		<p></p>		<p></p>	



X-ON Electronics

Largest Supplier of Electrical and Electronic Components

Click to view similar products for [D-Sub Cables](#) category:

Click to view products by [HARTING](#) manufacturer:

Other Similar products are found below :

[1200980218](#) [1200980067](#) [RB09P09P-006](#) [RB09P09P-012](#) [RB15P15P-006](#) [RB25P25P-006](#) [RB25P25P-012](#) [RB37P37P-024](#) [172-0906](#)
[SHD15P15S-012](#) [SHD15P15S-036](#) [SHD15P15S-060](#) [ACL-10137-2MM](#) [RB09P09P-024](#) [319285-3](#) [RS422-OM2](#) [SHD26P26S-060](#)
[SHD44P44S-036](#) [73-6210MM-6](#) [C200H-CN320-EU](#) [49725A 060S2](#) [73231-1321](#) [SDB-50AFFM-SL7A02](#) [49760A 060S2](#) [CS-](#)
[DSDMDB09MM-050](#) [HDB-26AFFM-SL7A02](#) [30-9503P](#) [30-9522P](#) [73-6220MM-6](#) [1200980058](#) [1200980066](#) [1200980078](#) [1200980052](#)
[1200980093](#) [1200980028](#) [1200980021](#) [1200980127](#) [SDB-09AFFM-SL7A02](#) [SDB-15AMMM-SL7A01](#) [BB-LDVYCBL](#) [83421-9286](#)
[MLDM2L-21P-6K7-18B](#) [KSFD1](#) [MM-2J2-021-SS1-41WN](#) [HDB-78AMMM-SL7A05](#) [SDB-37AMMM-SL7A03](#) [SDB-15AFFM-SL7A05](#)
[ACC-500-163-R](#) [172-1910](#) [2900907/21.4](#)