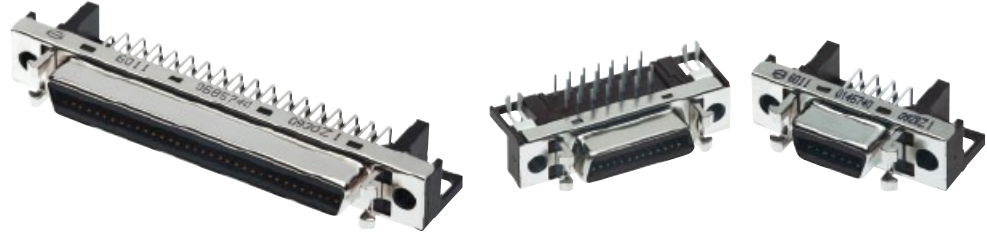


Number of contacts

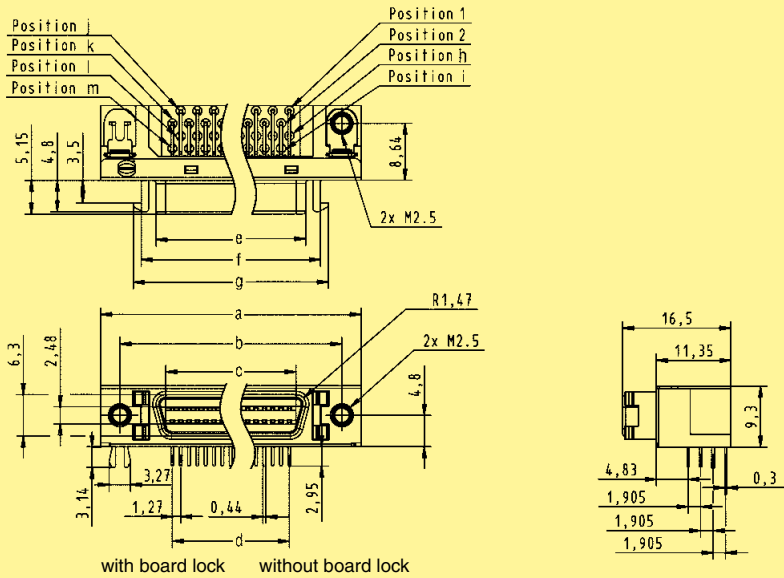
14-68



SMC female connectors, angled

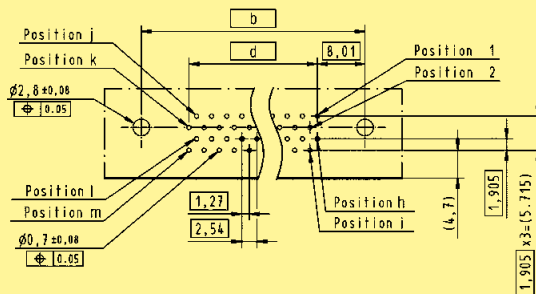
Identification	No. of contacts	for one reel (300 pieces)		Part No.	standard tray packaging
SMC female connectors with angled solder pins	14	60 11 014 57	.. 710	60 11 014 57	..
	20	60 11 020 57	.. 710	60 11 020 57	..
	26	60 11 026 57	.. 710	60 11 026 57	..
	36	60 11 036 57	.. 710	60 11 036 57	..
	50	60 11 050 57	.. 710	60 11 050 57	..
	68	60 11 068 57	.. 710	60 11 068 57	..
Without board lock	32				
With board lock	40				

Dimensions

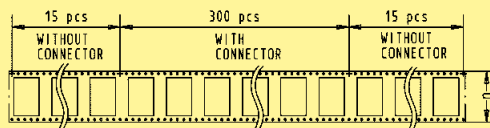


	a	b	c	d	e	f	g	h	i	j	k	l	m	n
14	29.54	23.64	9.62	7.62	12.62	17.14	19.54	8	9	7	6	14	13	44.0
20	33.35	27.45	13.43	11.43	16.43	20.95	23.35	11	12	9	10	19	20	56.5
26	37.16	31.26	17.24	15.24	20.24	24.76	27.16	14	15	13	12	26	25	56.0
36	43.51	37.61	23.59	21.59	26.59	31.11	33.51	19	20	17	18	35	36	56.0
50	52.40	46.50	32.48	30.48	35.48	40.00	42.40	26	27	25	24	50	49	72.5
68	63.83	57.93	43.91	41.91	46.91	51.43	53.83	35	36	33	34	67	68	88.5

Board drillings
(Components side)



Packaging
(1 reel = 300 pieces)
Reel diameter = 380 mm



Dimensions in mm

X-ON Electronics

Largest Supplier of Electrical and Electronic Components

Click to view similar products for [I/O Connectors](#) category:

Click to view products by [HARTING](#) manufacturer:

Other Similar products are found below :

[571763P](#) [58098-0628](#) [72.250.1628.2](#) [72.250.2428.2](#) [74720-0505](#) [76.350.0729.0](#) [76871-1403](#) [FCN-244F080-G/1](#) [FCN-260A9920](#) [PCR-E36PM](#) [PCS-XE26MA+](#) [G38A71314B](#) [1571250010](#) [157-22500-3](#) [MS3471L14-19P L/C](#) [192991-0703](#) [172501-4002](#) [172501-6002](#) [FCN-260C008-A/L0](#) [FCN-260C024-AL0](#) [FCN-261Z008](#) [2000314-1](#) [200331-1](#) [PCR-E36FC+](#) [PCS-E28FS+](#) [PCS-XE26SLFD+](#) [PCS-XE26SLFDT+](#) [G730VID08BDC24](#) [HDR-E14MSG1+](#) [U90B2054081210](#) [UE86K842720321](#) [38113800006](#) [DP3AR020WQ1R200](#) [Z4.102.0680.0](#) [500-1040](#) [500-1052](#) [500-1054](#) [ZP-4008-66L](#) [0709821002](#) [DX40-20P\(55\)](#) [5554841-1](#) [MS3474W18-8P-LC*](#) [SM3106F14S-7S-LC](#) [U90B3054061110](#) [U65-E04-4020](#) [ZPF000000000097891](#) [557-262M2-06C](#) [747360449](#) [10099439-003C-TRLF](#) [10137239-0021LF](#)