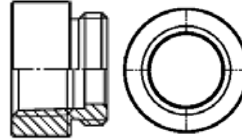


Cable Entry Accessories

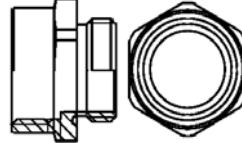
Adapters from M to NPT

| Male Thread | Female Thread | Part Number |
|-------------|---------------|----------------|
| M20 | 1/2" | 73 00 000 5322 |
| M25 | 1/2" | 73 00 000 5323 |
| M25 | 3/4" | 73 00 000 5319 |
| M32 | 3/4" | 73 00 000 5324 |
| M32 | 1" | 73 00 000 5320 |
| M32 | 1 1/4" | 73 00 000 5321 |
| M40 | 1 1/4" | 73 00 000 5325 |



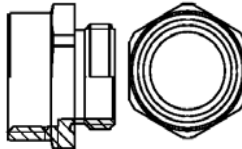
Adapters from M to PG

| Male Thread | Female Thread | Part Number |
|-------------|---------------|----------------|
| M20 | PG11 | 73 00 000 5326 |
| M25 | PG16 | 73 00 000 5327 |
| M25 | PG21 | 73 00 000 5328 |
| M32 | PG29 | 73 00 000 5329 |
| M40 | PG29 | 73 00 000 5330 |
| M50 | PG36 | 73 00 000 5331 |
| M50 | PG42 | 73 00 000 5332 |



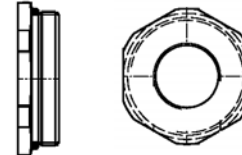
Adapters from PG to M

| Male Thread | Female Thread | Part Number |
|-------------|---------------|----------------|
| PG13.5 | M20 | 73 00 000 5333 |
| PG16 | M20 | 73 00 000 5334 |
| PG16 | M25 | 73 00 000 5335 |
| PG21 | M25 | 73 00 000 5336 |
| PG21 | M32 | 73 00 000 5337 |
| PG29 | M40 | 73 00 000 5338 |
| PG36 | M50 | 73 00 000 5339 |



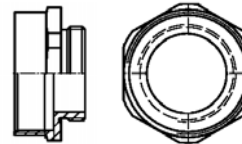
Adapters from PG to NPT

| Male Thread | Female Thread | Part Number |
|-------------|---------------|----------------|
| PG11 | 3/8" | 73 00 000 5308 |
| PG11 | 1/2" | 73 00 000 5310 |
| PG13.5 | 1/2" | 73 00 000 5311 |
| PG16 | 1/2" | 73 00 000 5312 |
| PG21 | 1/2" | 73 00 000 5313 |
| PG21 | 3/4" | 73 00 000 5314 |
| PG29 | 1" | 73 00 000 5315 |
| PG29 | 1 1/4" | 73 00 000 5316 |
| PG36 | 1 1/4" | 73 00 000 5317 |
| PG42 | 1 1/2" | 09 00 000 5046 |



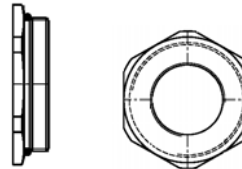
Increasesers - Metric

| Male Thread | Female Thread | Part Number |
|-------------|---------------|----------------|
| M20 | M25 | 73 00 000 5340 |
| M25 | M32 | 73 00 000 5341 |
| M32 | M40 | 73 00 000 5342 |
| M40 | M50 | 73 00 000 5344 |
| M50 | M63 | 73 00 000 5345 |



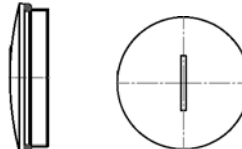
Reducers - Metric

| Male Thread | Female Thread | Part Number |
|-------------|---------------|----------------|
| M25 | M20 | 73 00 000 5346 |
| M32 | M25 | 73 00 000 5347 |
| M40 | M32 | 73 00 000 5348 |
| M50 | M40 | 73 00 000 5349 |



Metric Threaded Plugs

| Male thread | Part Number |
|-------------|----------------|
| M20 | 73 00 000 5350 |
| M25 | 73 00 000 5351 |
| M32 | 73 00 000 5352 |
| M40 | 73 00 000 5353 |
| M50 | 73 00 000 5354 |
| M63 | 73 00 000 5355 |



NPT Hood and Housings

HARTING offers hoods and housings with the NPT adapters pre-installed. To change a PG Hood or Housing to an NPT thread, change the 5th digit to a "5". For example, 09 30 016 0520 (PG21) becomes 09 30 516 0520 (3/4" NPT). See the accompanying chart for conversion details.

| | | |
|---------|------------|------------|
| PG 11 | convert to | 3/8" NPT |
| PG 13.5 | convert to | 1/2" NPT |
| PG 16 | convert to | 1/2" NPT |
| PG 21 | convert to | 3/4" NPT |
| PG 29 | convert to | 1" NPT |
| PG 36 | convert to | 1 1/4" NPT |

X-ON Electronics

Largest Supplier of Electrical and Electronic Components

Click to view similar products for [Heavy Duty Power Connectors](#) category:

Click to view products by [HARTING](#) manufacturer:

Other Similar products are found below :

[6646058-2](#) [6646137-1](#) [6646138-1](#) [6646940-1](#) [6651091-1](#) [6651525-1](#) [6651529-1](#) [696475-1](#) [702-32-01109](#) [73080255059](#) [73080965046](#)
[7310205040001](#) [765-16-0080B](#) [765-18-0080D](#) [902-77-02113](#) [PS00/A0620/6300](#) [AN0024023](#) [154-42B7WM250](#) [MS3117-14AC](#) [1643543-1](#)
[1766966-1](#) [1791340000](#) [NLDFT-3-BL-L-S120-M40A](#) [NLDFT-N-W-L-C240-M40B](#) [1926015-1](#) [NLS-3-BL-C240-M40B](#) [NLS-N-W-C240-](#)
[M40B](#) [NPS-3-BL-T6](#) [2-1589900-8](#) [9300480317](#) [294-0091-01100](#) [296-0040-01100](#) [1-6609148-0](#) [A32595-0049](#) [1766249-1](#) [19000005132](#)
[1926016-1](#) [1-966831-8](#) [AN0024202](#) [AN0264023](#) [279-0841-10100A](#) [281-0334-00100A](#) [RMSB4](#) [419-2083-301](#) [LCDX4/0-14B-X](#) [075-8519-](#)
[001](#) [078238-1613](#) [07.470.3256.0](#) [09000005288](#) [09140240311](#)