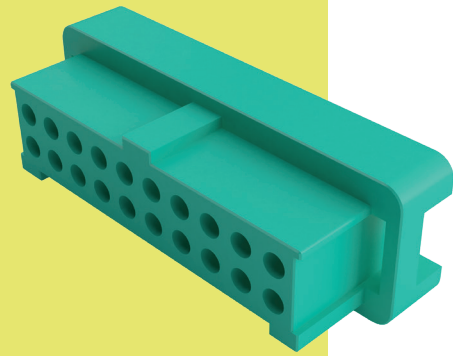


Gecko with Latches Connectors

Female Crimp Housings

- ❖ Features potting wall for extra security.
- ❖ No. 1 position identified on housing.
- ❖ Withstands extremes of temperature: -65°C to +150°C.
- ❖ 3 polarizing points on each housing prevent mis-mating.



GECKO WITH LATCHES

FEMALE		CALCULATION	
		A	$B + 3.8$
		B	$0.625 \times (\text{Total No. of contacts} - 2)$
		C	$B + 1.8$
TOOLS			
<p>Recommended Crimp Tool - Z125-900</p> <p>Positioner - Z125-901</p> <p>Contact Insertion/Removal Tool - Z125-902</p>		<ul style="list-style-type: none"> ❖ Female contacts shown on following pages. ❖ Instruction sheets available at www.harwin.com/instructions. 	
HOW TO ORDER			
G125 - 204 XX 96 L0			
SERIES CODE		LATCHES	
		L0	No Latches
TYPE		FINISH	
204	Female Housing	96	Housing
		TOTAL NO. OF CONTACTS	
			06, 10, 12, 16, 20, 26, 34, 50

All dimensions in mm.

Patent Published

X-ON Electronics

Largest Supplier of Electrical and Electronic Components

Click to view similar products for [Headers & Wire Housings](#) category:

Click to view products by [Harwin](#) manufacturer:

Other Similar products are found below :

[892-18-020-10-001101](#) [58102-G61-06LF](#) [582553-1](#) [0009485154](#) [009176003701906](#) [0050291907](#) [LY20-4P-DT1-P1E-BR](#) [02.125.8002.8](#)
[609-3404](#) [61062-3](#) [622-0430](#) [622-3653LF](#) [63453-116](#) [636-1030](#) [636-1427](#) [636-3427](#) [636-4007](#) [641938-9](#) [641991-4](#) [644827-2](#) [65817-010LF](#)
[65817-015LF](#) [65863-015LF](#) [66207-023LF](#) [67095-007LF](#) [67601157](#) [68648-049](#) [70.362.1628.0](#) [70-4210](#) [70-4226B](#) [70-4853B](#) [707-5020](#) [707-](#)
[5028](#) [71.350.2428.0](#) [71918-208LF](#) [71961-016LF](#) [733-134](#) [733-162](#) [754199-000](#) [760-3052](#) [787-8014-00](#) [79531-3000](#) [FCN-360C032-B](#) [FCN-](#)
[367T-T012/H](#) [FCN-723D010/2](#) [80.063.4001.1](#) [800-90-001-10-001000](#) [800-90-010-10-002000](#) [801-43-002-10-013000](#) [801-43-006-10-002000](#)