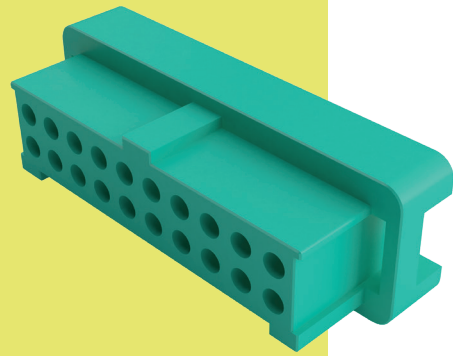


# Gecko with Latches Connectors

## Female Crimp Housings

- ❖ Features potting wall for extra security.
- ❖ No. 1 position identified on housing.
- ❖ Withstands extremes of temperature: -65°C to +150°C.
- ❖ 3 polarizing points on each housing prevent mis-mating.



GECKO WITH LATCHES

FEMALE		CALCULATION					
		<b>A</b>	$B + 3.8$				
		<b>B</b>	$0.625 \times (\text{Total No. of contacts} - 2)$				
		<b>C</b>	$B + 1.8$				
TOOLS							
<p><b>Recommended Crimp Tool</b> - Z125-900</p> <p><b>Positioner</b> - Z125-901</p> <p><b>Contact Insertion/Removal Tool</b> - Z125-902</p>		<ul style="list-style-type: none"> <li>❖ Female contacts shown on following pages.</li> <li>❖ Instruction sheets available at <a href="http://www.harwin.com/instructions">www.harwin.com/instructions</a>.</li> </ul>					
HOW TO ORDER							
<p><b>G125 - 204 XX 96 L0</b></p>							
<p><b>SERIES CODE</b></p>		<p><b>LATCHES</b></p> <table border="1"> <tr> <td><b>L0</b></td> <td>No Latches</td> </tr> </table>		<b>L0</b>	No Latches		
<b>L0</b>	No Latches						
<p><b>TYPE</b></p> <table border="1"> <tr> <td><b>204</b></td> <td>Female Housing</td> </tr> </table>		<b>204</b>	Female Housing	<p><b>FINISH</b></p> <table border="1"> <tr> <td><b>96</b></td> <td>Housing</td> </tr> </table>		<b>96</b>	Housing
<b>204</b>	Female Housing						
<b>96</b>	Housing						
		<p><b>TOTAL NO. OF CONTACTS</b></p> <table border="1"> <tr> <td><b>06, 10, 12, 16, 20, 26, 34, 50</b></td> </tr> </table>		<b>06, 10, 12, 16, 20, 26, 34, 50</b>			
<b>06, 10, 12, 16, 20, 26, 34, 50</b>							

All dimensions in mm.

Patent Published

## X-ON Electronics

Largest Supplier of Electrical and Electronic Components

*Click to view similar products for [Headers & Wire Housings](#) category:*

*Click to view products by [Harwin](#) manufacturer:*

Other Similar products are found below :

[892-18-020-10-001101](#) [58102-G61-06LF](#) [582553-1](#) [0009485154](#) [009176003701906](#) [0050291907](#) [LY20-4P-DT1-P1E-BR](#) [02.125.8002.8](#)  
[609-3404](#) [61062-3](#) [622-0430](#) [622-3653LF](#) [63453-116](#) [636-1030](#) [636-1427](#) [636-3427](#) [636-4007](#) [641938-9](#) [641991-4](#) [644827-2](#) [65817-010LF](#)  
[65817-015LF](#) [65863-015LF](#) [66207-023LF](#) [67095-007LF](#) [67601157](#) [68648-049](#) [70.362.1628.0](#) [70-4210](#) [70-4226B](#) [70-4853B](#) [707-5020](#) [707-](#)  
[5028](#) [71.350.2428.0](#) [71918-208LF](#) [71961-016LF](#) [733-134](#) [733-162](#) [754199-000](#) [760-3052](#) [787-8014-00](#) [79531-3000](#) [FCN-360C032-B](#) [FCN-](#)  
[367T-T012/H](#) [FCN-723D010/2](#) [80.063.4001.1](#) [800-90-001-10-001000](#) [800-90-010-10-002000](#) [801-43-002-10-013000](#) [801-43-006-10-002000](#)