

Gecko Screw-Lok Connectors

GECKO SCREW-LOK

Male Crimp Housing

- Features 2.5mm potting wall for extra security.
- No. 1 position identified on housing.
- 3 polarizing points on each housing prevent mis-mating.
- Use with male crimp contacts and pre-cabled contacts shown on following pages.
- Order nuts for panel mount separately - see bottom of page.



| WITHOUT PANEL MOUNT | WITH PANEL MOUNT | | | | | | | | |
|--|---|-------------|--|---|------------|---|---|---|-----------|
| | | | | | | | | | |
| <table border="1"> <thead> <tr> <th colspan="2">CALCULATION</th> </tr> </thead> <tbody> <tr> <td>A</td> <td>$B + 12.7$</td> </tr> <tr> <td>B</td> <td>$0.625 \times (\text{Total No. of contacts} - 2)$</td> </tr> <tr> <td>C</td> <td>$B + 7.8$</td> </tr> </tbody> </table> | | CALCULATION | | A | $B + 12.7$ | B | $0.625 \times (\text{Total No. of contacts} - 2)$ | C | $B + 7.8$ |
| CALCULATION | | | | | | | | | |
| A | $B + 12.7$ | | | | | | | | |
| B | $0.625 \times (\text{Total No. of contacts} - 2)$ | | | | | | | | |
| C | $B + 7.8$ | | | | | | | | |

HOW TO ORDER

G125 - 324 XX 96 XX

| | | | | |
|------------------------------|--------------------------------|------------------|---------------------------|-----------------|
| SERIES CODE | G125 | SCREW-LOK | M1 | Internal Thread |
| TYPE | 324 Male Housing | M2 | With 5mm Panel Mount stud | |
| TOTAL NO. OF CONTACTS | 06, 10, 12, 16, 20, 26, 34, 50 | FINISH | 96 | Housing |

TOOLS

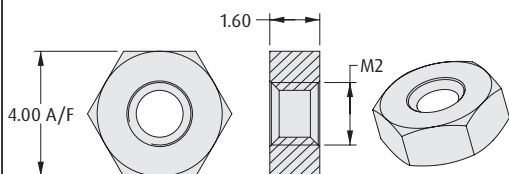
- Recommended Crimp Tool** - Z125-900
- Positioner** - Z125-901
- Contact Insertion/Removal Tool** - Z125-902

- Male contacts shown on following pages.
- Instruction sheets available at www.harwin.com/instructions.

REQUIRED HARDWARE

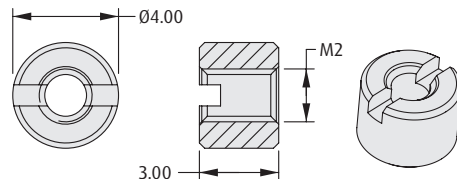
Order separately from connector

Hexagonal Board Mount Nut



ORDER CODE
G125-4500000B

Slotted Board Mount Nut



ORDER CODE
G125-4510000B

All dimensions in mm.

Patent Published

X-ON Electronics

Largest Supplier of Electrical and Electronic Components

Click to view similar products for [Headers & Wire Housings](#) category:

Click to view products by [Harwin](#) manufacturer:

Other Similar products are found below :

[892-18-020-10-001101](#) [58102-G61-06LF](#) [582553-1](#) [0009485154](#) [009176003701906](#) [0050291907](#) [LY20-4P-DT1-P1E-BR](#) [02.125.8002.8](#)
[609-3404](#) [61062-3](#) [622-0430](#) [622-3653LF](#) [63453-116](#) [636-1030](#) [636-1427](#) [636-3427](#) [636-4007](#) [641938-9](#) [641991-4](#) [644827-2](#) [65817-010LF](#)
[65817-015LF](#) [65863-015LF](#) [66207-023LF](#) [67095-007LF](#) [67601157](#) [68648-049](#) [70.362.1628.0](#) [70-4210](#) [70-4226B](#) [70-4853B](#) [707-5020](#) [707-5028](#) [71.350.2428.0](#) [71918-208LF](#) [71961-016LF](#) [733-134](#) [733-162](#) [754199-000](#) [760-3052](#) [787-8014-00](#) [79531-3000](#) [FCN-360C032-B](#) [FCN-367T-T012/H](#) [FCN-723D010/2](#) [80.063.4001.1](#) [800-90-001-10-001000](#) [800-90-010-10-002000](#) [801-43-002-10-013000](#) [801-43-006-10-002000](#)