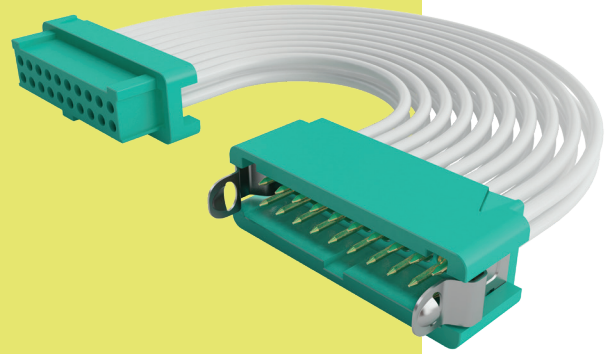


# Gecko with Latches Connectors

## Female Cable Assemblies

- ❏ 4-finger Beryllium Copper contact.
- ❏ No. 1 position identified on moulding.
- ❏ 2A current capacity, resists high vibration and shock.
- ❏ Withstands extremes of temperature: -65°C to +150°C.
- ❏ Back potted for added strain relief.
- ❏ For non-standard cable lengths, please visit [harwin.com/cable-assemblies](http://harwin.com/cable-assemblies) and fill in your requirements.



### PART NUMBERING SYSTEM

**G125 - F C X XX 05 L0 - XXXX X**

#### SERIES CODE

#### GENDER - FIRST END

<b>F</b>	Female
----------	--------

#### CABLE SIZE

<b>1</b>	26 AWG
<b>2</b>	28 AWG
<b>3</b>	30 AWG
<b>4</b>	32 AWG

#### TOTAL NO. OF CONTACTS

<b>06, 10, 12, 16, 20, 26, 34, 50</b>
---------------------------------------

#### TERMINATION - SECOND END

<b>L</b>	Loose cut end
<b>F</b>	Female connector

#### CABLE LENGTH

<b>0150</b>	150mm
<b>0300</b>	300mm (double-ended)
<b>0450</b>	450mm (single-ended)

#### LATCHES

<b>L0</b>	No Latches
-----------	------------

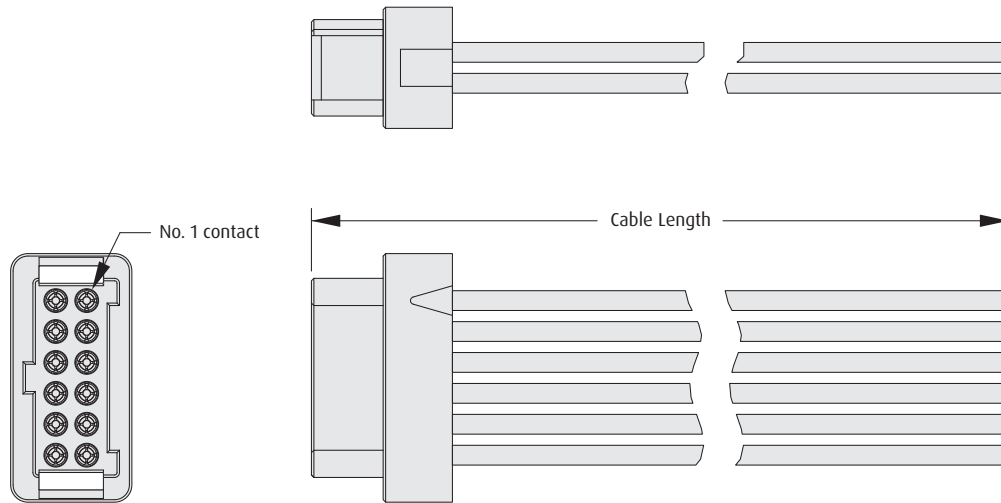
#### FINISH

<b>05</b>	Gold
-----------	------

# Female Cable Assemblies

- ❖ See previous page for cable length options.
- ❖ Cable assemblies are constructed with Contact 1 attached to Contact 1, Contact 2 to Contact 2, etc.

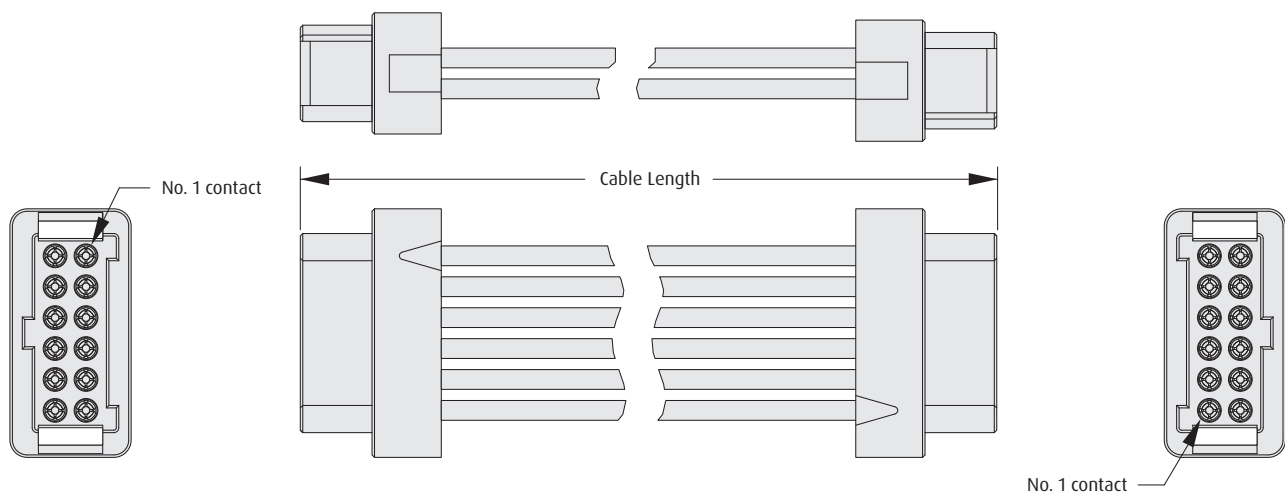
## FEMALE SINGLE ENDED



### ORDER CODE

G125-FCXXX05L0-XXXXL

## FEMALE - FEMALE



### ORDER CODE

G125-FCXXX05L0-XXXXF

All dimensions in mm.

Patent Published

## X-ON Electronics

Largest Supplier of Electrical and Electronic Components

*Click to view similar products for [Rectangular Cable Assemblies](#) category:*

*Click to view products by [Harwin](#) manufacturer:*

Other Similar products are found below :

[MC320E-N-23](#) [G125FC10668L0-0300L](#) [G125FC10668L0-0150L](#) [G125-FC11068L0-0150L](#) [G125-FC11068L0-0300L](#) [HQCD-090-05.00-](#)  
[TTR-TTR-1-B](#) [M80-FC23468FC-0150L](#) [215322-2032](#) [215323-2052](#) [215323-1032](#) [215323-2031](#) [SFSDT-35-28-H-24.00-SR](#) [SFSDT-30-28-](#)  
[H-24.00-SR](#) [SFSDT-50-28-H-24.00-SR](#) [S1SS-05-28-GF-10.00-S](#) [SMSD-05-24-L-06.00-D-K-KDX](#) [ERCDCD-030-11.81-TEU-TED-1-D](#)  
[CABLE-PH10](#) [CABLE-EH04](#) [vrw-05-20-50-01g-000-e090](#) [MP-2J1-025-PS1-005M](#) [CABLE-PH04](#) [27ZRO-B-1A](#) [M300-FC11005F2-0450L](#)  
[M300-FC21005F2-0450L](#) [M80-FC305F1-04-0300F1](#) [45130-0401](#) [45130-0210](#) [45130-0410](#) [45111-0402](#) [45111-0603](#) [15134-0302](#) [15134-](#)  
[0401](#) [15134-0803](#) [15134-0801](#) [45111-0403](#) [15132-0403](#) [15131-0403](#) [15134-1003](#) [15134-1000](#) [45135-0603](#) [45135-0401](#) [45132-0610](#) [15134-](#)  
[1002](#) [45135-0610](#) [45132-0403](#) [15134-1203](#) [15135-0806](#) [15134-0300](#) [15134-1202](#)