

Customer Information Sheet

DRAWING No.: M20-106XX00

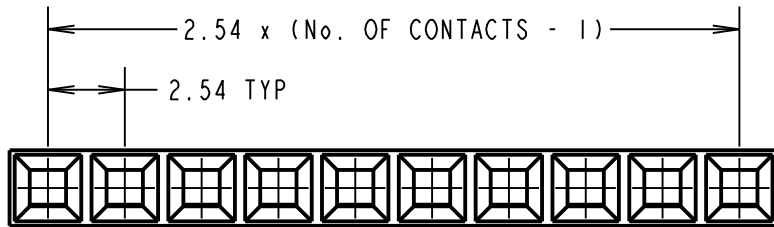
IF IN DOUBT - ASK

(C)

NOT TO SCALE

THIRD ANGLE PROJECTION

ALL DIMENSIONS IN mm



SPECIFICATIONS:

ELECTRICAL:

CURRENT RATING = 3A AC/DC
 VOLTAGE RATING = 250V AC MAX
 CONTACT RESISTANCE = 20mΩ MAX
 INSULATION RESISTANCE = 1,000MΩ MIN
 DIELECTRIC STRENGTH = 800V AC FOR 1 MINUTE

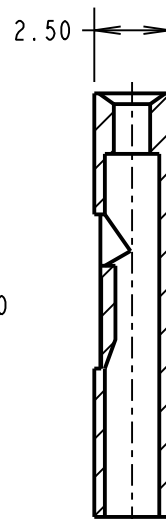
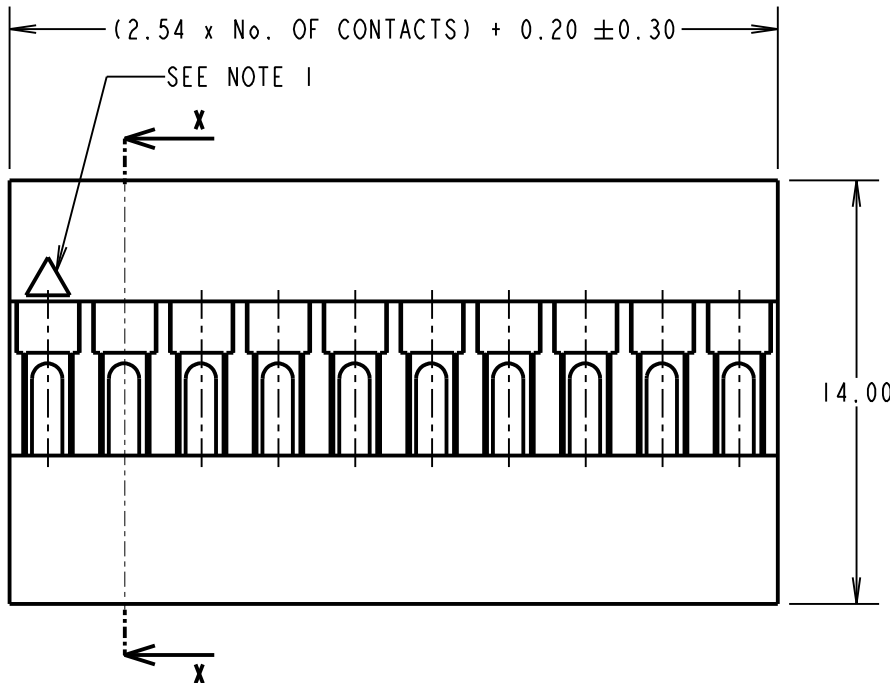
ENVIRONMENTAL:

TEMPERATURE RANGE = -25°C TO +85°C

ORDER CODE:

M20-106XX00

No. OF CONTACTS:
 01 TO 12



SECTION X-X

NOTES:

- CONTACT No. 1 IDENTIFICATION.
- FOR USE WITH CRIMP CONTACTS:
 M20-11600XX (REELED CONTACTS),
 M20-11800XX (LOOSE CONTACTS).
- THE ABOVE SPECIFICATIONS APPLY WHEN THIS MOULDING IS USED WITH THE SPECIFIED CONTACTS.
- FOR COMPLETE ELECTRICAL AND MECHANICAL SPECIFICATION, SEE COMPONENT SPECIFICATION COOIXX (LATEST ISSUE).
- MATING PIN LENGTH = 6.30mm MAX
 5.50mm MIN

MGP	8	27.02.19	21370
NAME	ISS.	DATE	C/NOTE
APPROVED: MGP			
CHECKED: SB			
DRAWN: S.BENNETT			
CUSTOMER REF.:			
ASSEMBLY DRG:			

HARWIN

www.harwin.com
 technical@harwin.com

THIS DRAWING AND ANY INFORMATION OR DESCRIPTIVE MATTER SET OUT HEREON ARE CONFIDENTIAL AND COPYRIGHT PROPERTY OF THE HARWIN GROUP AND MUST NOT BE DISCLOSED, LOANED, COPIED OR USED FOR MANUFACTURING, TENDERING OR FOR ANY OTHER PURPOSE WITHOUT THEIR WRITTEN PERMISSION.

TOLERANCES
 X. = ±1mm
 X.X = ±0.50mm
 X.XX = ±0.20mm
 X.XXX = ±0.01mm
 ANGLES = ±5°
 UNLESS STATED

MATERIAL:
 PPE+PS
 UL94V-1 BLACK

FINISH:

S/AREA: mm²

TITLE:
 2.54mm PITCH SIL
 CRIMP MOULDING

DRAWING NUMBER:
M20-106XX00

SHT
 2 OF 2

X-ON Electronics

Largest Supplier of Electrical and Electronic Components

Click to view similar products for [Headers & Wire Housings](#) category:

Click to view products by [Harwin](#) manufacturer:

Other Similar products are found below :

[892-18-020-10-001101](#) [58102-G61-06LF](#) [582553-1](#) [0009485154](#) [009176003701906](#) [0050291907](#) [LY20-4P-DT1-P1E-BR](#) [02.125.8002.8](#)
[609-3404](#) [61062-3](#) [622-0430](#) [622-3653LF](#) [63453-116](#) [636-1030](#) [636-1427](#) [636-3427](#) [636-4007](#) [641938-9](#) [641991-4](#) [644827-2](#) [65817-010LF](#)
[65817-015LF](#) [65863-015LF](#) [66207-023LF](#) [67095-007LF](#) [67601157](#) [68648-049](#) [70.362.1628.0](#) [70-4210](#) [70-4226B](#) [70-4853B](#) [707-5020](#) [707-](#)
[5028](#) [71.350.2428.0](#) [71918-208LF](#) [71961-016LF](#) [733-134](#) [733-162](#) [754199-000](#) [760-3052](#) [787-8014-00](#) [79531-3000](#) [FCN-360C032-B](#) [FCN-](#)
[367T-T012/H](#) [FCN-723D010/2](#) [80.063.4001.1](#) [800-90-001-10-001000](#) [800-90-010-10-002000](#) [801-43-002-10-013000](#) [801-43-006-10-002000](#)