

# Customer Information Sheet

DRAWING No.: M20-107XX00

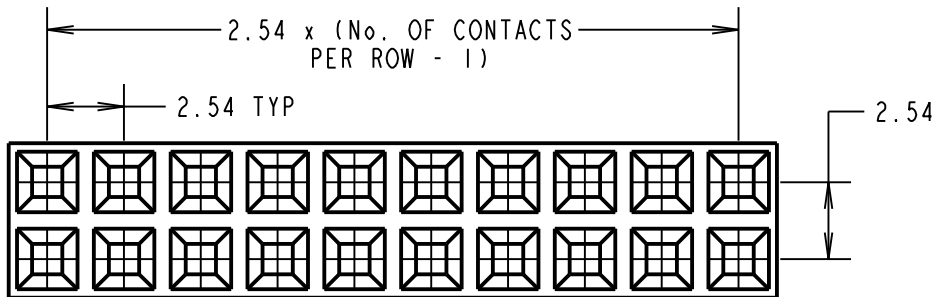
IF IN DOUBT - ASK

©

NOT TO SCALE

THIRD ANGLE PROJECTION

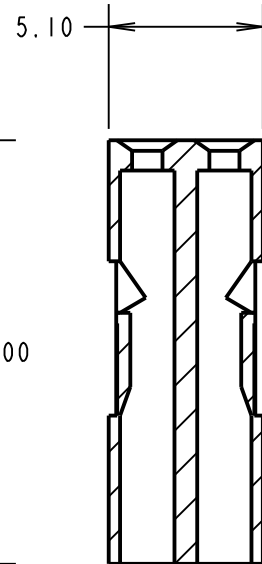
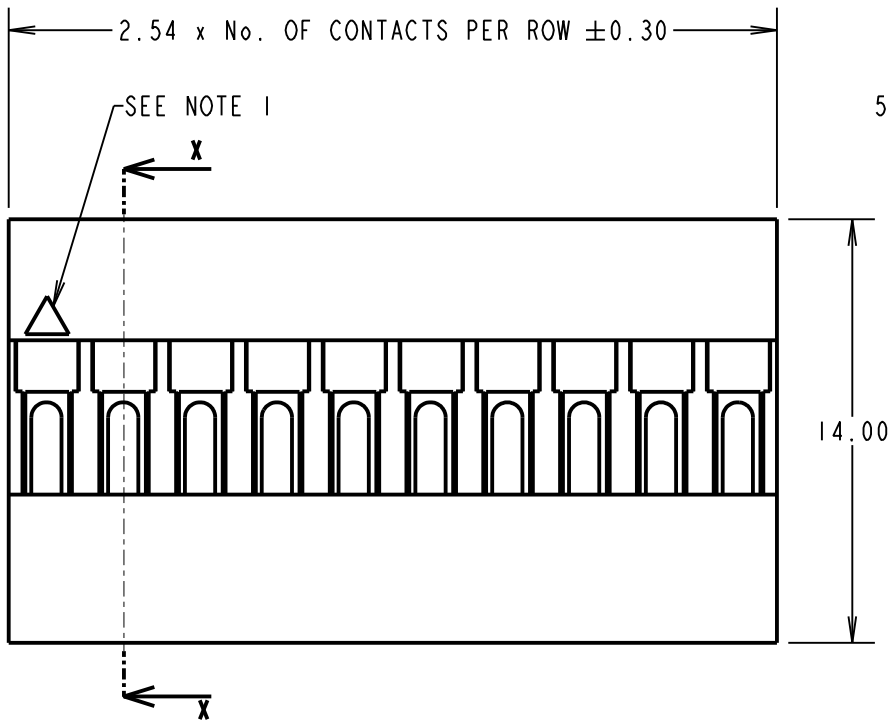
ALL DIMENSIONS IN mm



ORDER CODE:

**M20-107XX00**

No. OF CONTACTS PER ROW:   
 02 TO 12



SECTION X-X

**SPECIFICATIONS:**

**ELECTRICAL:**

CURRENT RATING = 3A AC/DC

VOLTAGE RATING = 250V AC MAX

CONTACT RESISTANCE = 20mΩ MAX

INSULATION RESISTANCE = 1,000MΩ MIN

DIELECTRIC STRENGTH = 1,000 AC FOR 1 MINUTE

**ENVIRONMENTAL:**

TEMPERATURE RANGE = -25°C TO +85°C

**NOTES:**

- CONTACT No. 1 MARKER SYMBOL.
- FOR USE WITH CRIMP CONTACTS:  
M20-11600XX (REELED CONTACTS),  
M20-11800XX (LOOSE CONTACTS).
- THE ABOVE SPECIFICATIONS APPLY WHEN THIS MOULDING IS USED WITH THE SPECIFIC CONTACTS.
- FOR COMPLETE ELECTRICAL AND MECHANICAL SPECIFICATIONS, SEE COMPONENT SPECIFICATION C001XX (LATSEST ISSUE).
- MATING LENGTH = 6.30mm MAX  
5.50mm MIN

MGP	8	15.02.21	22182
NAME	ISS.	DATE	CN/CO
APPROVED: MGP			
CHECKED: RA			
DRAWN: S.BENNETT			
CUSTOMER REF.:			
ASSEMBLY DRG:			

**HARWIN**

www.harwin.com  
technical@harwin.com

THIS DRAWING AND ANY INFORMATION OR DESCRIPTIVE MATTER SET OUT HEREON ARE CONFIDENTIAL AND COPYRIGHT PROPERTY OF THE HARWIN GROUP AND MUST NOT BE DISCLOSED, LOANED, COPIED OR USED FOR MANUFACTURING, TENDERING OR FOR ANY OTHER PURPOSE WITHOUT THEIR WRITTEN PERMISSION.

**TOLERANCES**  
X. = ±1mm  
X.X = ±0.50mm  
X.XX = ±0.20mm  
X.XXX = ±0.01mm  
ANGLES = ±5°  
UNLESS STATED

**MATERIAL:**  
PPE+PS  
UL94V-1 BLACK

**FINISH:**  
**S/AREA:** mm<sup>2</sup>

**TITLE:**  
2.54mm PITCH DIL  
CRIMP MOULDING

**DRAWING NUMBER:**  
**M20-107XX00**

SHT  
2 OF 2

## X-ON Electronics

Largest Supplier of Electrical and Electronic Components

*Click to view similar products for [Headers & Wire Housings](#) category:*

*Click to view products by [Harwin](#) manufacturer:*

Other Similar products are found below :

[892-18-020-10-001101](#) [58102-G61-06LF](#) [582553-1](#) [0009485154](#) [009176003701906](#) [0050291907](#) [LY20-4P-DT1-P1E-BR](#) [02.125.8002.8](#)  
[609-3404](#) [61062-3](#) [622-0430](#) [622-3653LF](#) [63453-116](#) [636-1030](#) [636-1427](#) [636-3427](#) [636-4007](#) [641938-9](#) [641991-4](#) [644827-2](#) [65817-010LF](#)  
[65817-015LF](#) [65863-015LF](#) [66207-023LF](#) [67095-007LF](#) [67601157](#) [68648-049](#) [70.362.1628.0](#) [70-4210](#) [70-4226B](#) [70-4853B](#) [707-5020](#) [707-](#)  
[5028](#) [71.350.2428.0](#) [71918-208LF](#) [71961-016LF](#) [733-134](#) [733-162](#) [754199-000](#) [760-3052](#) [787-8014-00](#) [79531-3000](#) [FCN-360C032-B](#) [FCN-](#)  
[367T-T012/H](#) [FCN-723D010/2](#) [80.063.4001.1](#) [800-90-001-10-001000](#) [800-90-010-10-002000](#) [801-43-002-10-013000](#) [801-43-006-10-002000](#)