

# Customer Information Sheet

DRAWING No.: M22-302XX00

SHEET 2 OF 2

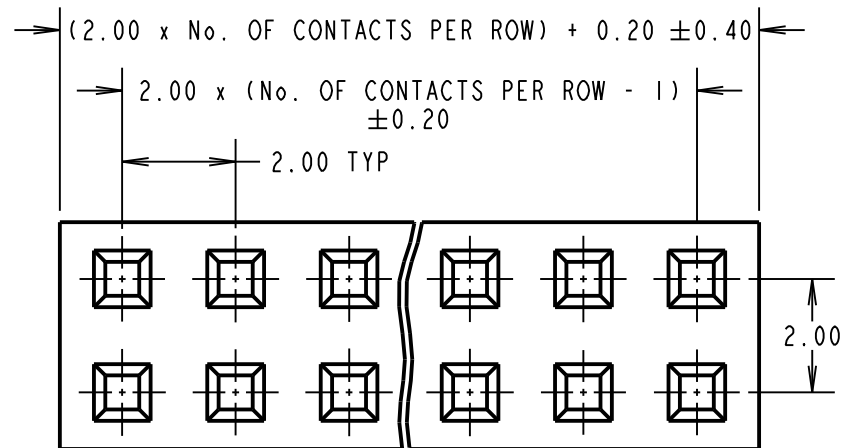
IF IN DOUBT - ASK

(C)

NOT TO SCALE

THIRD ANGLE PROJECTION

ALL DIMENSIONS IN mm



**NOTES:**

1. TO BE USED WITH CRIMP CONTACTS M22-30400XX (REELED) OR M22-30500XX (LOOSE).
2. ALL TOLERANCES ARE  $\pm 0.10$  UNLESS OTHERWISE STATED.
3. TRIANGLE PIN INDICATOR IS ON PIN 1 AND EVERY 5th PIN AFTER.
4. MATING PIN LENGTH = 4.5mm MAX  
4.0mm MIN

**SPECIFICATION:**

**MATERIAL**

MOULDING = NYLON 66 UL94V-2, BLACK

**ELECTRICAL:**

CURRENT RATING = 1A AC/DC

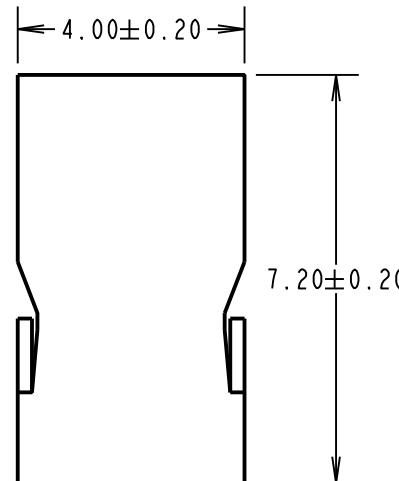
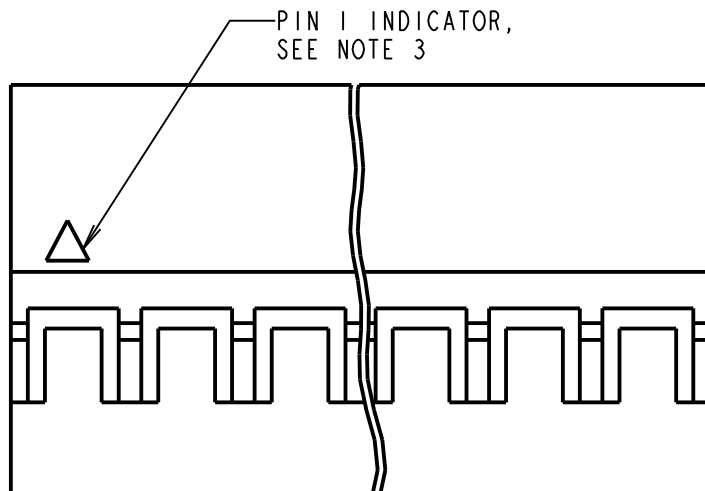
VOLTAGE RATING = 250V AC/DC

DIELECTRIC WITHSTANDING VOLTAGE = 800V AC FOR ONE MINUTE

INSULATION RESISTANCE = 1000M $\Omega$  MIN

**ENVIRONMENTAL:**

OPERATING TEMPERATURE = -25°C TO +85°C



ORDER CODE:

**M22-302XX00**

No. OF CONTACTS PER ROW:

|                    |      |          |        |
|--------------------|------|----------|--------|
| MSP                | 13   | 24.07.17 | 20286  |
| NAME               | ISS. | DATE     | C/NOTE |
| APPROVED: M.PERREN |      |          |        |
| CHECKED: M.PLESTED |      |          |        |
| DRAWN: A. LIOTTA   |      |          |        |
| CUSTOMER REF.:     |      |          |        |
| ASSEMBLY DRG:      |      |          |        |

**HARWIN**

www.harwin.com  
technical@harwin.com

THIS DRAWING AND ANY INFORMATION OR DESCRIPTIVE MATTER SET OUT HEREON ARE CONFIDENTIAL AND COPYRIGHT PROPERTY OF THE HARWIN GROUP AND MUST NOT BE DISCLOSED, LOANED, COPIED OR USED FOR MANUFACTURING, TENDERING OR FOR ANY OTHER PURPOSE WITHOUT THEIR WRITTEN PERMISSION.

**TOLERANCES**

X. =  $\pm 1$ mm  
X.X =  $\pm 0.50$ mm  
X.XX =  $\pm 0.10$ mm  
X.XXX =  $\pm 0.01$ mm

ANGLES =  $\pm 5^\circ$   
UNLESS STATED

**MATERIAL:**

SEE ABOVE

FINISH: SEE ABOVE

S/AREA: mm<sup>2</sup>

**TITLE:**

2.00mm DIL CRIMP  
SOCKET HOUSING

DRAWING NUMBER:

**M22-302XX00**

SHT  
2 OF 2

## X-ON Electronics

Largest Supplier of Electrical and Electronic Components

*Click to view similar products for [Headers & Wire Housings](#) category:*

*Click to view products by [Harwin](#) manufacturer:*

Other Similar products are found below :

[892-18-020-10-001101](#) [58102-G61-06LF](#) [582553-1](#) [0009485154](#) [009176003701906](#) [0050291907](#) [LY20-4P-DT1-P1E-BR](#) [02.125.8002.8](#)  
[609-3404](#) [61062-3](#) [622-0430](#) [622-3653LF](#) [63453-116](#) [636-1030](#) [636-1427](#) [636-3427](#) [636-4007](#) [641938-9](#) [641991-4](#) [644827-2](#) [65817-010LF](#)  
[65817-015LF](#) [65863-015LF](#) [66207-023LF](#) [67095-007LF](#) [67601157](#) [68648-049](#) [70.362.1628.0](#) [70-4210](#) [70-4226B](#) [70-4853B](#) [707-5020](#) [707-5028](#) [71.350.2428.0](#) [71918-208LF](#) [71961-016LF](#) [733-134](#) [733-162](#) [754199-000](#) [760-3052](#) [787-8014-00](#) [79531-3000](#) [FCN-360C032-B](#) [FCN-367T-T012/H](#) [FCN-723D010/2](#) [80.063.4001.1](#) [800-90-001-10-001000](#) [800-90-010-10-002000](#) [801-43-002-10-013000](#) [801-43-006-10-002000](#)