

Customer Information Sheet

DRAWING No.: M30-610XX46 SHEET 2 OF 2

IF IN DOUBT - ASK

(C)

NOT TO SCALE

THIRD ANGLE PROJECTION

ALL DIMENSIONS IN mm

SPECIFICATION:

MATERIAL:
 MOULDING = NYLON 66, UL94V-0, NATURAL
 CONTACTS = BRASS

FINISH:
 CONTACTS = 2.03µ - 2.54µ 100% TIN
 OVER 0.76µ NICKEL

ELECTRICAL:
 CURRENT RATING = 1A AC/DC
 VOLTAGE RATING = 150V AC/DC
 CONTACT RESISTANCE = 30mΩ MAX
 INSULATION RESISTANCE = 500MΩ MIN
 DIELECTRIC WITHSTANDING VOLTAGE = 500V AC
 FOR ONE MINUTE

ENVIRONMENTAL:
 TEMPERATURE RANGE = -25°C TO +85°C

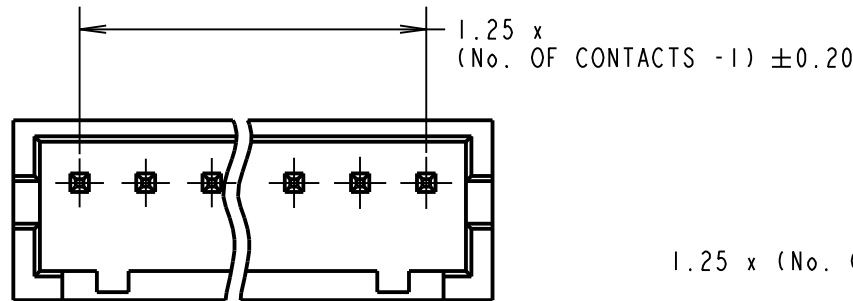
PACKING:
 02 CONTACTS = BOX
 03 - 15 CONTACTS = TUBE
 FOR COMPLETE SPECIFICATION, SEE COMPONENT
 SPECIFICATION C025XX (LATEST ISSUE)

ORDER CODE:

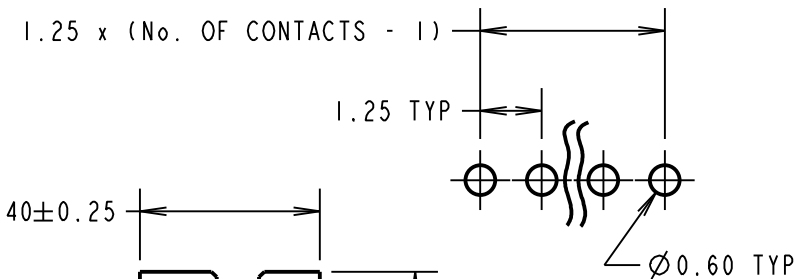
M30-610XX46

No. OF CONTACTS
 02 TO 15

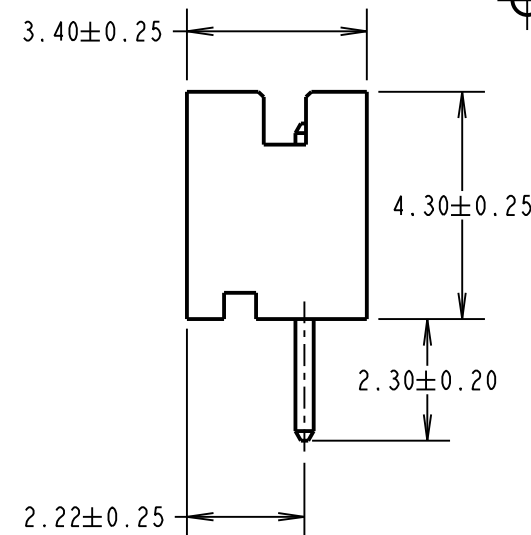
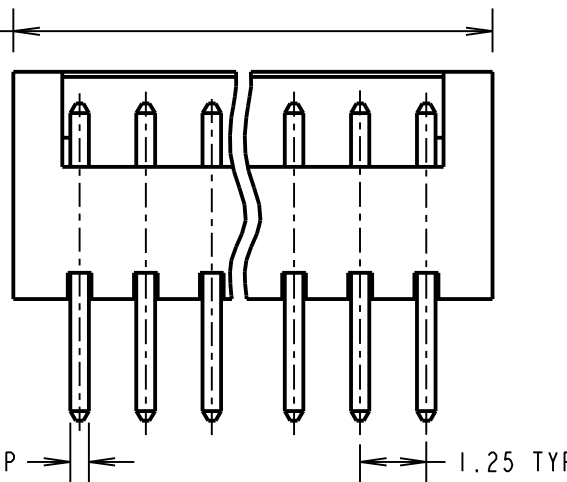
FINISH:
 46 = 100% TIN



RECOMMENDED PCB LAYOUT
 (TOLERANCE ±0.05)



(1.25 x No. OF CONTACTS) + 1.25 ± 0.25



NOTES:

1. MATES WITH M30-1050046 AND M30-1060046 CRIMP CONTACTS,
 WITH M30-110XX00 CRIMP MOULDING.

MSP	10	07.10.15	13098
NAME	ISS.	DATE	C/NOTE
APPROVED:		M. PERREN	
CHECKED:		S. BENNETT	
DRAWN:		W. BOURNE	
CUSTOMER REF.:			
ASSEMBLY DRG:			

HARWIN

www.harwin.com
 technical@harwin.com

THIS DRAWING AND ANY INFORMATION OR DESCRIPTIVE MATTER SET OUT HEREON ARE CONFIDENTIAL AND COPYRIGHT PROPERTY OF THE HARWIN GROUP AND MUST NOT BE DISCLOSED, LOANED, COPIED OR USED FOR MANUFACTURING, TENDERING OR FOR ANY OTHER PURPOSE WITHOUT THEIR WRITTEN PERMISSION.

TOLERANCES
 X. = ±1mm
 X.X = ±0.50mm
 X.XX = ±0.10mm
 X.XXX = ±0.01mm
 ANGLES = ±5°
 UNLESS STATED

MATERIAL:
 SEE ABOVE
FINISH: SEE ABOVE
S/AREA: mm²

TITLE:
 1.25mm PITCH SIL PC TAIL
 BOARD MOUNT CONNECTOR
DRAWING NUMBER:
M30-610XX46

SHT
 2 OF 2

X-ON Electronics

Largest Supplier of Electrical and Electronic Components

Click to view similar products for [Headers & Wire Housings](#) category:

Click to view products by [Harwin](#) manufacturer:

Other Similar products are found below :

[892-18-020-10-001101](#) [58102-G61-06LF](#) [582553-1](#) [0009485154](#) [009176003701906](#) [0050291907](#) [LY20-4P-DT1-P1E-BR](#) [02.125.8002.8](#)
[609-3404](#) [61062-3](#) [622-0430](#) [622-3653LF](#) [63453-116](#) [636-1030](#) [636-1427](#) [636-3427](#) [636-4007](#) [641938-9](#) [641991-4](#) [644827-2](#) [65817-010LF](#)
[65817-015LF](#) [65863-015LF](#) [66207-023LF](#) [67095-007LF](#) [67601157](#) [68648-049](#) [70.362.1628.0](#) [70-4210](#) [70-4226B](#) [70-4853B](#) [707-5020](#) [707-](#)
[5028](#) [71.350.2428.0](#) [71918-208LF](#) [71961-016LF](#) [733-134](#) [733-162](#) [754199-000](#) [760-3052](#) [787-8014-00](#) [79531-3000](#) [FCN-360C032-B](#) [FCN-](#)
[367T-T012/H](#) [FCN-723D010/2](#) [80.063.4001.1](#) [800-90-001-10-001000](#) [800-90-010-10-002000](#) [801-43-002-10-013000](#) [801-43-006-10-002000](#)