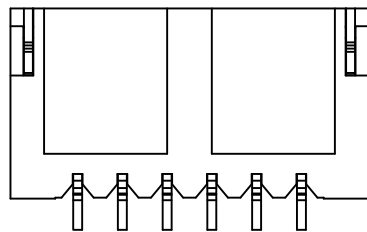
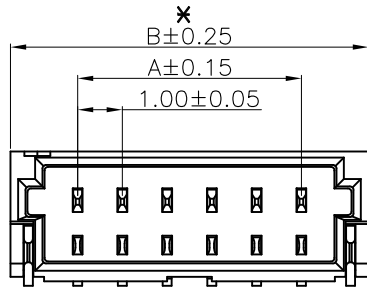


CIRCUIT 1 MARK



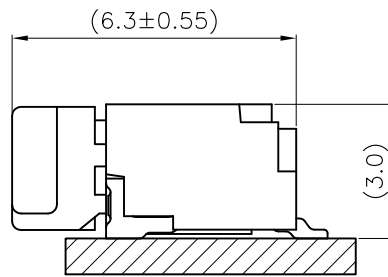
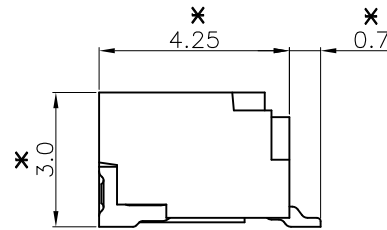
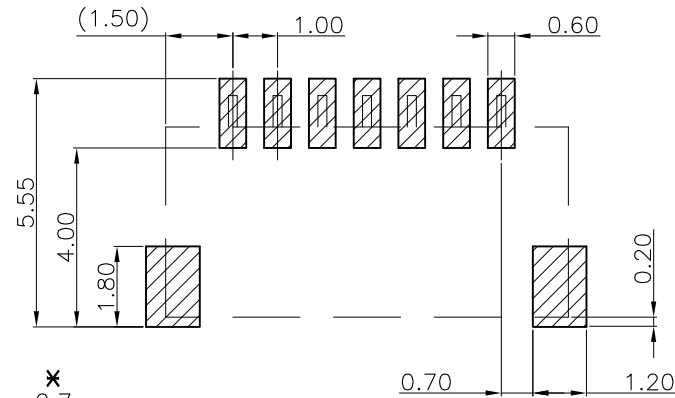
#NOTE: REMOVE R FOR LOOSE BAG PACKING

ORDER CODE

M40-401 XX 46R

NO. OF WAYS WITH R: REEL PACKING

WITHOUT R: LOOSE BAG PACKING
(10 PCS PER STRIP, 10 STRIPS PER BAG)



Mating Condition (REF.)

TOLERANCE: ±0.05
RECOMMENDED P.C.B. Layout
TOP VIEW

NO. OF WAYS	PART NO.	Dim.(mm)	
		A	B
2	M40-4010246R	1.00	4.00
3	M40-4010346R	2.00	5.00
4	M40-4010446R	3.00	6.00
5	M40-4010546R	4.00	7.00
6	M40-4010646R	5.00	8.00
7	M40-4010746R	6.00	9.00
8	M40-4010846R	7.00	10.00
9	M40-4010946R	8.00	11.00
10	M40-4011046R	9.00	12.00
11	M40-4011146R	10.00	13.00
12	M40-4011246R	11.00	14.00
13	M40-4011346R	12.00	15.00
14	M40-4011446R	13.00	16.00
15	M40-4011546R	14.00	17.00
16	M40-4011646R	15.00	18.00
17	M40-4011746R	16.00	19.00
18	M40-4011846R	17.00	20.00
19	M40-4011946R	18.00	21.00
20	M40-4012046R	19.00	22.00

SPECIFICATIONS:

MATERIAL:

INSULATION: LCP, UL94V-0 (HALOGEN FREE); COLOR: CREAM.
CONTACT: COPPER ALLOY, t=0.20mm.

FINISH:

MATTE-TIN PLATED OVER NICKEL

ELECTRICAL:

CURRENT RATING: 1A AC/DC
WORKING VOLTAGE: 50V AC/DC
WITHSTANDING VOLTAGE: 500V AC/MINUTE
CONTACT RESISTANCE: 30 mΩ MAX.
INSULATION RESISTANCE: 100 MΩ MIN.

ENVIRONMENTAL:

TEMPERATURE RANGE: -25°C TO +85°C

Leo	6	08.02.18	A533
Allan	5	25.09.08	A164
Allan	4	27.06.08	A136
Allan	3	19.06.08	A130
Allan	2	08.03.07	A022
Allan	1	01.08.06	--

NAME	ISS.	DATE	C/NOTE
------	------	------	--------

APPROVED: B.Lim

CHECKED: D.P

DRAWN: Leo

CUSTOMER REF.:

ASSEMBLY DRG:

NOTE: ALL DIMENSIONS AND NOTES MARKED * ARE CRITICAL AND MUST BE CHECKED IN ACCORDANCE WITH QUALITY DOC. QI-02A

HARWIN

HARWIN USA
TEL: 603 893 5376
FAX: 603 893 5396
mis@harwin.com

HARWIN Europe (UK)
TEL: 023 9231 4545
FAX: 023 9231 4590
mis@harwin.co.uk

HARWIN Asia
TEL: +65 6 779 4909
FAX: +65 6 779 3868
mis@harwin.com.sg

THIS DRAWING AND ANY INFORMATION OR DESCRIPTIVE MATTER SET OUT HEREON ARE CONFIDENTIAL AND COPYRIGHT PROPERTY OF THE HARWIN GROUP AND MUST NOT BE DISCLOSED, LOANED, COPIED OR USED FOR MANUFACTURING, TENDERING OR FOR ANY OTHER PURPOSE WITHOUT THEIR WRITTEN PERMISSION.

TOLERANCES
X. = ±1mm
X.X = ±0.25mm
X.XX = ±0.15mm
X.XXX = ±0.08mm
ANGLES = ±5°
UNLESS STATED

MATERIAL: SEE NOTES

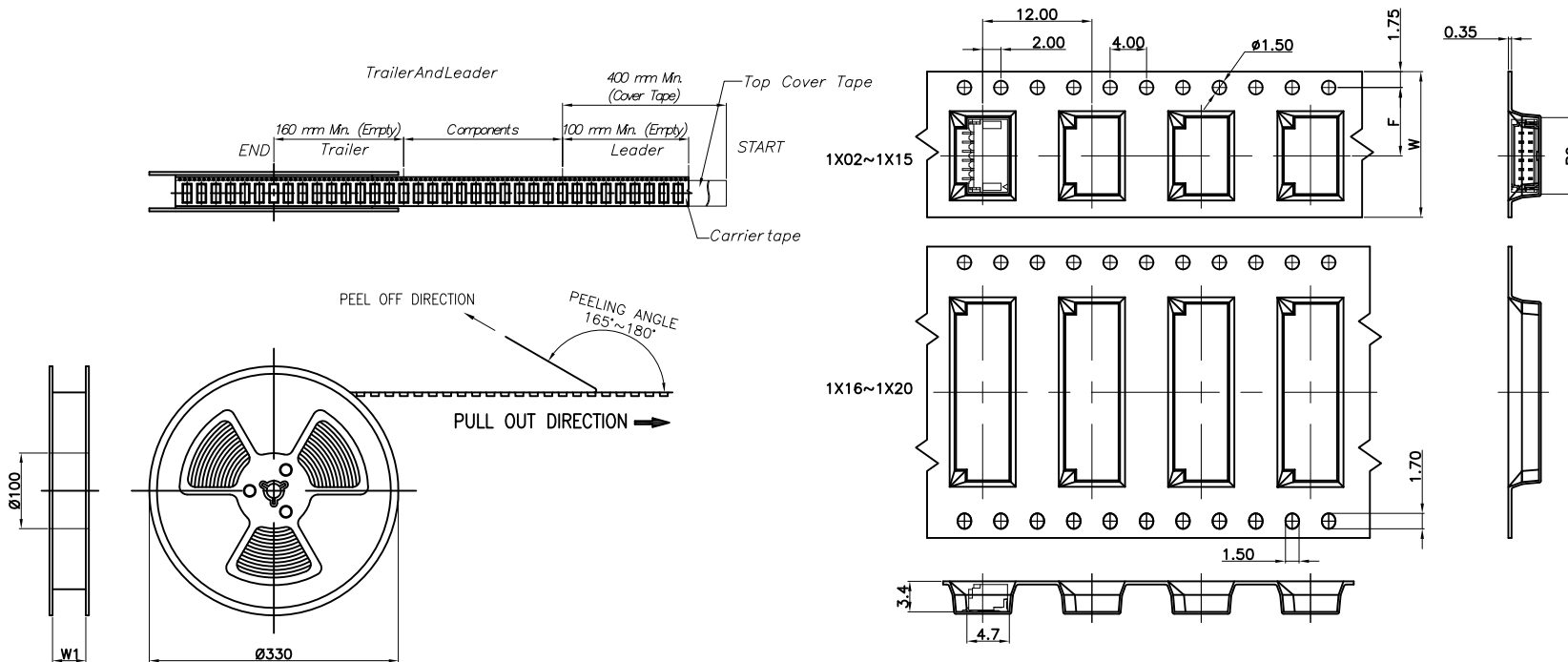
FINISH: SEE NOTES

S/AREA: mm²

TITLE: WAFER 1.00mm SIDE ENTRY SMT TYPE

DRAWING NUMBER: M40-401 XX 46 X

SHT 1 OF 2



Pin	Dim.(mm)			
	B0	F	W	W1
1x02	4.40	7.50	16.00	17.50
1x03	5.40			
1x04	6.40			
1x05	7.40			
1x06	8.40			
1x07	9.40			
1x08	10.40	11.50	24.00	25.50
1x09	11.40			
1x10	12.40			
1x11	13.40			
1x12	14.40			
1x13	15.40			
1x14	16.40			
1x15	17.40	14.20	32.00	33.50
1x16	18.40			
1x17	19.40			
1x18	20.40			
1x19	21.40	20.20	44.00	45.50
1x20	22.40			

Leo	6	08.02.18	A533
Allan	5	25.09.08	A164
Allan	4	27.06.08	A136
Allan	3	19.06.08	A130
Allan	2	08.03.07	A022
Allan	1	01.08.06	--

NAME	ISS.	DATE	C/NOTE
------	------	------	--------

APPROVED: B.Lim

CHECKED: D.P

DRAWN: Leo

CUSTOMER REF.:

ASSEMBLY DRG:

- 10 SPROCKET HOLE PITCH CUMULATIVE TOLERANCE ± 0.20
- CARRIER CAMBER IS WITHIN 1 mm IN 250 mm
- THE TOTAL TEARING CONTROL RANGE OF TOP COVER TAPE IS 10~130g, REFERENCE SPEC: EIA-481-D
- PEELING SPEED: 300mm/MINUTES, REFERENCE SPEC: EIA-481-D
- MATERIAL: TRANSPARENT CONDUCTIVE POLYSTYRENE ALLOY.(UP-5000)
- ALL DIMENSIONS MEET EIA-481-D REQUIREMENTS
- THICKNESS: 0.35 ± 0.05 mm
- COMPONENT LOAD PER 13" REEL: 1500 PCS

NOTE: ALL DIMENSIONS AND NOTES MARKED * ARE CRITICAL AND MUST BE CHECKED IN ACCORDANCE WITH QUALITY DOC. QI-02A

HARWIN

HARWIN USA
TEL: 603 893 5376
FAX: 603 893 5396
mis@harwin.com

HARWIN Europe (UK)
TEL: 023 9231 4545
FAX: 023 9231 4590
mis@harwin.co.uk

HARWIN Asia
TEL: +65 6 779 4909
FAX: +65 6 779 3868
mis@harwin.com.sg

THIS DRAWING AND ANY INFORMATION OR DESCRIPTIVE MATTER SET OUT HEREON ARE CONFIDENTIAL AND COPYRIGHT PROPERTY OF THE HARWIN GROUP AND MUST NOT BE DISCLOSED, LOANED, COPIED OR USED FOR MANUFACTURING, TENDERING OR FOR ANY OTHER PURPOSE WITHOUT THEIR WRITTEN PERMISSION.

TOLERANCES
X. = ± 1 mm
X.X = ± 0.25 mm
X.XX = ± 0.15 mm
X.XXX = ± 0.08 mm
ANGLES = $\pm 5^\circ$
UNLESS STATED

MATERIAL:
SEE NOTES

FINISH: SEE NOTES

S/AREA: mm²

TITLE:
WAFER 1.00mm SIDE ENTRY SMT TYPE

DRAWING NUMBER:
M40-401 XX 46 X

SHT
2
OF
2

X-ON Electronics

Largest Supplier of Electrical and Electronic Components

Click to view similar products for [Headers & Wire Housings](#) category:

Click to view products by [Harwin](#) manufacturer:

Other Similar products are found below :

[892-18-020-10-001101](#) [58102-G61-06LF](#) [582553-1](#) [0009485154](#) [009176003701906](#) [0050291907](#) [LY20-4P-DT1-P1E-BR](#) [02.125.8002.8](#)
[609-3404](#) [61062-3](#) [622-0430](#) [622-3653LF](#) [63453-116](#) [636-1030](#) [636-1427](#) [636-3427](#) [636-4007](#) [641938-9](#) [641991-4](#) [644827-2](#) [65817-010LF](#)
[65817-015LF](#) [65863-015LF](#) [66207-023LF](#) [67095-007LF](#) [67601157](#) [68648-049](#) [70.362.1628.0](#) [70-4210](#) [70-4226B](#) [70-4853B](#) [707-5020](#) [707-](#)
[5028](#) [71.350.2428.0](#) [71918-208LF](#) [71961-016LF](#) [733-134](#) [733-162](#) [754199-000](#) [760-3052](#) [787-8014-00](#) [79531-3000](#) [FCN-360C032-B](#) [FCN-](#)
[367T-T012/H](#) [FCN-723D010/2](#) [80.063.4001.1](#) [800-90-001-10-001000](#) [800-90-010-10-002000](#) [801-43-002-10-013000](#) [801-43-006-10-002000](#)