

# Customer Information Sheet

DRAWING No.: M80-00300XX

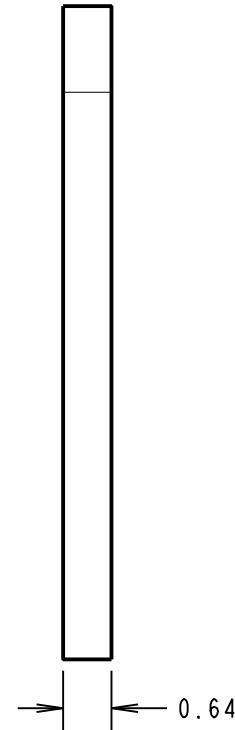
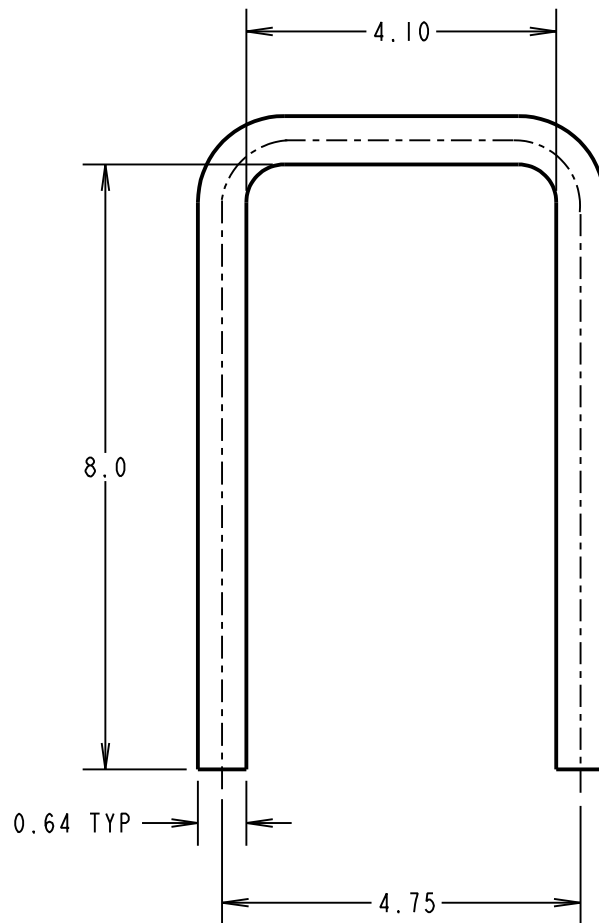
IF IN DOUBT - ASK

©

NOT TO SCALE

THIRD ANGLE PROJECTION

ALL DIMENSIONS IN mm



## NOTES:

1. M80-0030006 IS SUPPLIED WITH ALL HORIZONTAL M80 DATAMATE LATCH-STYLE CONNECTORS. ALSO SUITABLE FOR USE WITH VERTICAL CONNECTORS.

MGP	13	21.07.21	30679
NAME	ISS.	DATE	CN/CO
APPROVED: MGP			
CHECKED: RTP			
DRAWN: I. SANDY			
CUSTOMER REF.:			
ASSEMBLY DRG:			

PART No.	FINISH
M80-0030006	3µm 100% TIN/NICKEL
M80-0030045	0.25µm GOLD/NICKEL

# HARWIN

www.harwin.com  
technical@harwin.com

THIS DRAWING AND ANY INFORMATION OR DESCRIPTIVE MATTER SET OUT HEREON ARE CONFIDENTIAL AND COPYRIGHT PROPERTY OF THE HARWIN GROUP AND MUST NOT BE DISCLOSED, LOANED, COPIED OR USED FOR MANUFACTURING, TENDERING OR FOR ANY OTHER PURPOSE WITHOUT THEIR WRITTEN PERMISSION.

TOLERANCES  
X. = ±1mm  
X.X = ±0.50mm  
X.XX = ±0.20mm  
X.XXX = ±0.01mm  
ANGLES = ±5°  
UNLESS STATED

MATERIAL:  
BRASS CW508L H150  
TO BS EN 1652  
(CuZn37 HARD)  
FINISH: SEE TABLE  
S/AREA: mm<sup>2</sup>

TITLE:  
DATAMATE  
PLUG RETAINING STRAP

DRAWING NUMBER:  
**M80-00300XX**

SHT  
2  
OF 2

## X-ON Electronics

Largest Supplier of Electrical and Electronic Components

*Click to view similar products for* [Headers & Wire Housings](#) *category:*

*Click to view products by* [Harwin](#) *manufacturer:*

Other Similar products are found below :

[892-18-020-10-001101](#) [58102-G61-06LF](#) [582553-1](#) [0009485154](#) [009176003701906](#) [0050291907](#) [LY20-4P-DT1-P1E-BR](#) [02.125.8002.8](#)  
[609-3404](#) [61062-3](#) [622-0430](#) [622-3653LF](#) [63453-116](#) [636-1030](#) [636-1427](#) [636-3427](#) [636-4007](#) [641938-9](#) [641991-4](#) [644827-2](#) [65817-010LF](#)  
[65817-015LF](#) [65863-015LF](#) [66207-023LF](#) [67095-007LF](#) [67601157](#) [68648-049](#) [70.362.1628.0](#) [70-4210](#) [70-4226B](#) [70-4853B](#) [707-5020](#) [707-](#)  
[5028](#) [71.350.2428.0](#) [71918-208LF](#) [71961-016LF](#) [733-134](#) [733-162](#) [754199-000](#) [760-3052](#) [787-8014-00](#) [79531-3000](#) [FCN-360C032-B](#) [FCN-](#)  
[367T-T012/H](#) [FCN-723D010/2](#) [80.063.4001.1](#) [800-90-001-10-001000](#) [800-90-010-10-002000](#) [801-43-002-10-013000](#) [801-43-006-10-002000](#)