

# Customer Information Sheet

DRAWING No.: M80-25300XX & M80-25400XX

IF IN DOUBT - ASK

©

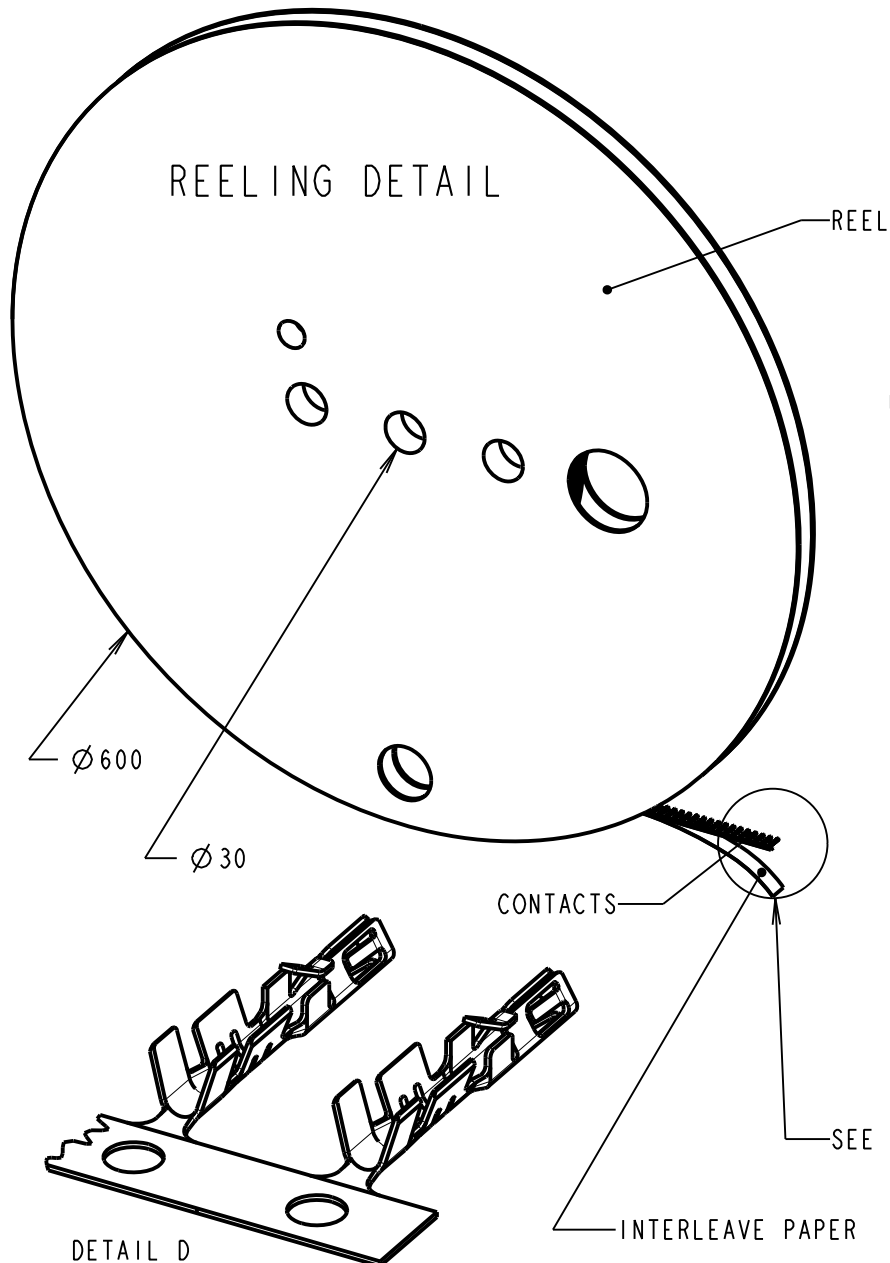
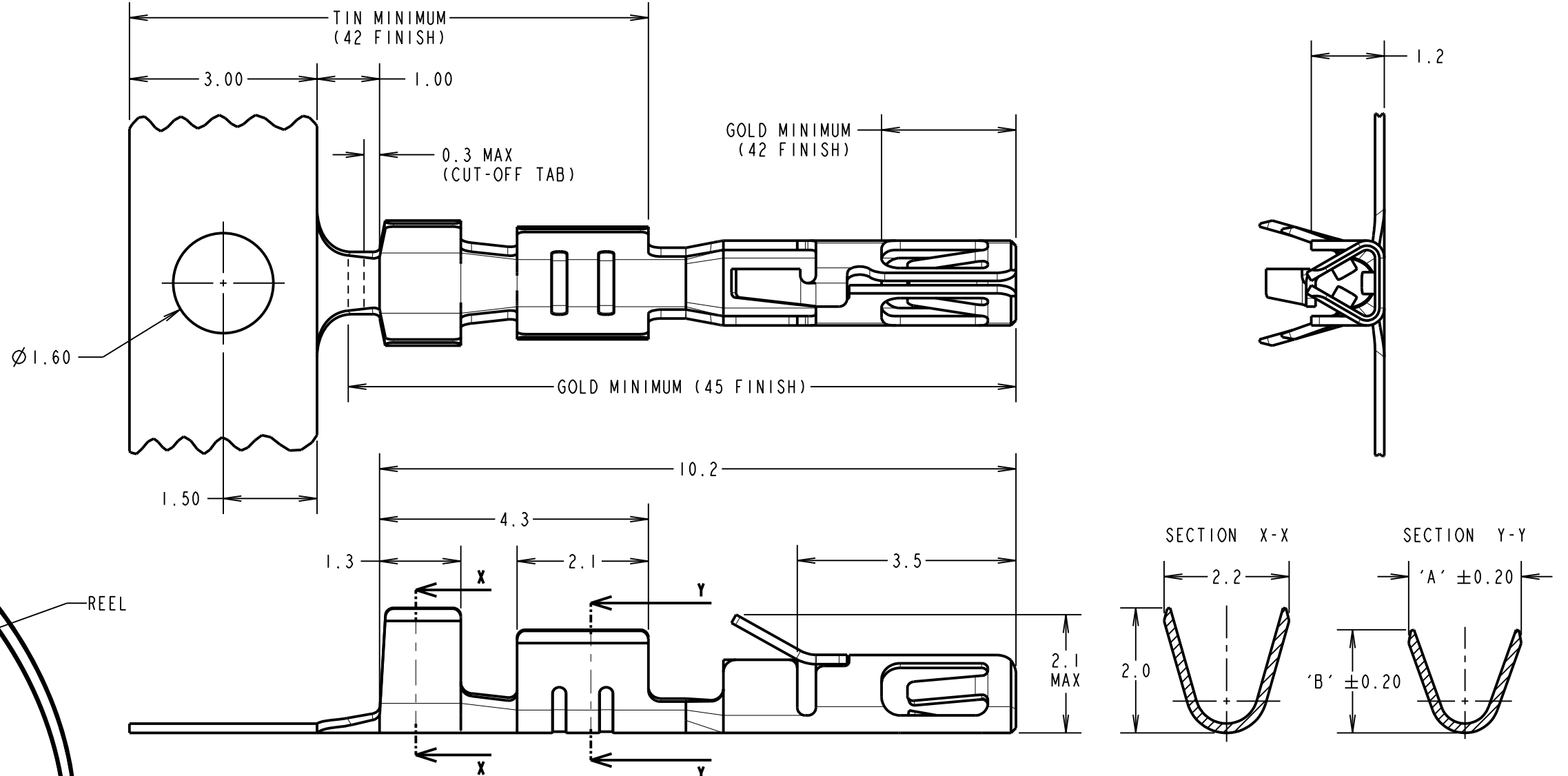
NOT TO SCALE

THIRD ANGLE PROJECTION

ALL DIMENSIONS IN mm

## SPECIFICATION:

**MATERIAL:**  
 BERYLLIUM COPPER  
**FINISH (ALL OVER NICKEL):**  
 45 = 0.3µm MIN GOLD  
 42 = 3µm MIN 100% TIN AND 0.3µm MIN GOLD,  
 SELECTIVE PLATE  
**MECHANICAL:**  
 INSERTION FORCE = 2.8N MAX, 1.0N MIN  
 WITHDRAWAL FORCE = 1.8N MAX, 0.2N MIN  
 DURABILITY = 400 OPERATIONS  
**ENVIRONMENTAL:**  
 OPERATING TEMPERATURE = -55°C TO +125°C  
**PACKING:**  
 REEL (AS SHOWN), 15K/REEL  
 FOR COMPLETE CONNECTOR SPECIFICATION, SEE  
 COMPONENT SPECIFICATION C040XX (LATEST ISSUE)



## NOTES:

- TO BE USED WITH THE FOLLOWING FEMALE HOUSING:  
 M80-454XX98 = HOUSING ONLY  
 M80-455XX98 = HOUSING + SLOTTED JACKSCREW  
 M80-456XX98 = HOUSING + HEX SOCKET JACKSCREW  
 M80-457XX98 = HOUSING + REVERSE FIX JACKSCREW  
 M80-458XX98 = HOUSING + GUIDE AND BOARD MOUNT  
 M80-459XX98 = HOUSING + 101LOK JACKSCREWS
- RECOMMENDED WIRE TYPE = BS 3G 210 TYPE A,  
 WIRE 22-28 AWG, WIRE INSULATION  $\varnothing 0.6\text{mm}$ - $\varnothing 1.1\text{mm}$ .  
 STRIP WIRE BY 2.7-3.0mm FOR CRIMPING.
- RECOMMENDED CRIMP HEIGHTS:  
 0.76-0.82mm FOR 22-24 AWG CONTACTS  
 0.50-0.56mm FOR 26-28 AWG CONTACTS
- SUITABLE FOR PROCESSING WITH LEFT SIDE  
 FEED CRIMPING PRESS.  
 CONTACT [datamate@harwin.com](mailto:datamate@harwin.com) FOR DETAILS.
- CONTACTS ARE AVAILABLE LOOSE, PART NUMBER  
 M80-28300XX FOR 24-22 AWG WIRE AND  
 M80-28400XX FOR 28-26 AWG WIRE, SUITABLE FOR  
 PROCESSING WITH HAND CRIMP TOOL Z80-255.

PART No.	DIMENSION	
	'A'	'B'
M80-25300XX	1.80	1.65
M80-25400XX	1.34	1.00

ORDER CODE:

**M80-XXX00XX**

WIRE SIZE: \_\_\_\_\_  
 253 = 24-22 AWG (0.22-0.34mm<sup>2</sup>)  
 254 = 28-26 AWG (0.08-0.12mm<sup>2</sup>)

FINISH: \_\_\_\_\_  
 45 = GOLD ALL OVER  
 42 = 100% TIN & GOLD SELECTIVE

RTP	9	24.07.20	22088
NAME	ISS.	DATE	CN/CO
APPROVED: R.PORTLOCK			
CHECKED: M.RUDKIN			
DRAWN: B. M. KENT			
CUSTOMER REF.:			
ASSEMBLY DRG:			

**HARWIN**

[www.harwin.com](http://www.harwin.com)  
[technical@harwin.com](mailto:technical@harwin.com)

THIS DRAWING AND ANY  
 INFORMATION OR DESCRIPTIVE  
 MATTER SET OUT HEREON ARE  
 CONFIDENTIAL AND COPYRIGHT  
 PROPERTY OF THE HARWIN  
 GROUP AND MUST NOT BE  
 DISCLOSED, LOANED, COPIED  
 OR USED FOR MANUFACTURING,  
 TENDERING OR FOR ANY  
 OTHER PURPOSE WITHOUT  
 THEIR WRITTEN PERMISSION.

TOLERANCES  
 X. =  $\pm 1\text{mm}$   
 X.X =  $\pm 0.50\text{mm}$   
 X.XX =  $\pm 0.20\text{mm}$   
 X.XXX =  $\pm 0.01\text{mm}$   
 ANGLES =  $\pm 5^\circ$   
 UNLESS STATED

MATERIAL: SEE ABOVE  
 FINISH: SEE ABOVE  
 S/AREA: mm<sup>2</sup>

TITLE: DATAMATE TRIO-TEK  
 FEMALE CRIMP CONTACT REELED  
 24-22 AWG & 28-26 AWG

DRAWING NUMBER:  
**M80-25300XX & M80-25400XX**

SHT  
 5 OF 5

## X-ON Electronics

Largest Supplier of Electrical and Electronic Components

*Click to view similar products for [Headers & Wire Housings](#) category:*

*Click to view products by [Harwin](#) manufacturer:*

Other Similar products are found below :

[892-18-020-10-001101](#) [58102-G61-06LF](#) [582553-1](#) [0009485154](#) [009176003701906](#) [0050291907](#) [LY20-4P-DT1-P1E-BR](#) [02.125.8002.8](#)  
[609-3404](#) [61062-3](#) [622-0430](#) [622-3653LF](#) [63453-116](#) [636-1030](#) [636-1427](#) [636-3427](#) [636-4007](#) [641938-9](#) [641991-4](#) [644827-2](#) [65817-010LF](#)  
[65817-015LF](#) [65863-015LF](#) [66207-023LF](#) [67095-007LF](#) [67601157](#) [68648-049](#) [70.362.1628.0](#) [70-4210](#) [70-4226B](#) [70-4853B](#) [707-5020](#) [707-](#)  
[5028](#) [71.350.2428.0](#) [71918-208LF](#) [71961-016LF](#) [733-134](#) [733-162](#) [754199-000](#) [760-3052](#) [787-8014-00](#) [79531-3000](#) [FCN-360C032-B](#) [FCN-](#)  
[367T-T012/H](#) [FCN-723D010/2](#) [80.063.4001.1](#) [800-90-001-10-001000](#) [800-90-010-10-002000](#) [801-43-002-10-013000](#) [801-43-006-10-002000](#)