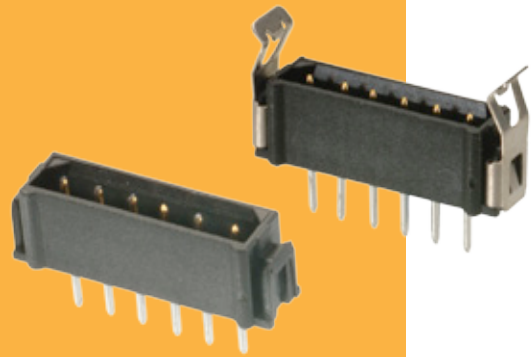


Male Single Row Vertical PC Tail

- ❖ Polarised mouldings.
- ❖ Fully shrouded contacts.
- ❖ Mates with female connectors shown on pages 21 to 24.
- ❖ For British Standard versions see pages 18 to 19.
- ❖ Can be used with Strain Relief straps:
order code **M80-0030006**.



DATAMATE L-TEK

UNLATCHED		CALCULATION																																	
		<table border="1"> <tr> <td>A</td> <td>$B + 5.60$</td> </tr> <tr> <td>B</td> <td>$(\text{Total no. of contacts} - 1) \times 2$</td> </tr> </table>		A	$B + 5.60$	B	$(\text{Total no. of contacts} - 1) \times 2$																												
A	$B + 5.60$																																		
B	$(\text{Total no. of contacts} - 1) \times 2$																																		
		<p>Recommended PC Board Pattern</p>																																	
LOCKING LATCH		FRICTION LATCH																																	
HOW TO ORDER																																			
M80 - XXX XX XX																																			
SERIES CODE		FINISH																																	
<table border="1"> <thead> <tr> <th>RoHS </th> <th>Non-RoHS </th> <th></th> </tr> </thead> <tbody> <tr> <td>852</td> <td>879</td> <td>Unlatched (3mm tail)</td> </tr> <tr> <td>882</td> <td>877</td> <td>Locking Latch (3mm tail)</td> </tr> <tr> <td>881</td> <td>805</td> <td>Friction Latch (3mm tail)</td> </tr> <tr> <td>752</td> <td>752</td> <td>Unlatched (4.5mm tail)</td> </tr> <tr> <td>782</td> <td>782</td> <td>Locking Latch (4.5mm tail)</td> </tr> <tr> <td>781</td> <td>781</td> <td>Friction Latch (4.5mm tail)</td> </tr> </tbody> </table>	RoHS	Non-RoHS		852	879	Unlatched (3mm tail)	882	877	Locking Latch (3mm tail)	881	805	Friction Latch (3mm tail)	752	752	Unlatched (4.5mm tail)	782	782	Locking Latch (4.5mm tail)	781	781	Friction Latch (4.5mm tail)	<table border="1"> <tbody> <tr> <td>05</td> <td>Gold</td> <td></td> </tr> <tr> <td>22</td> <td>Gold + Tin/Lead</td> <td></td> </tr> <tr> <td>42</td> <td>Gold + Tin</td> <td></td> </tr> <tr> <td>45</td> <td>Gold</td> <td></td> </tr> </tbody> </table>		05	Gold		22	Gold + Tin/Lead		42	Gold + Tin		45	Gold	
RoHS	Non-RoHS																																		
852	879	Unlatched (3mm tail)																																	
882	877	Locking Latch (3mm tail)																																	
881	805	Friction Latch (3mm tail)																																	
752	752	Unlatched (4.5mm tail)																																	
782	782	Locking Latch (4.5mm tail)																																	
781	781	Friction Latch (4.5mm tail)																																	
05	Gold																																		
22	Gold + Tin/Lead																																		
42	Gold + Tin																																		
45	Gold																																		
		TOTAL NO. OF CONTACTS 02 to 07, 17, 22																																	

All dimensions in mm.

X-ON Electronics

Largest Supplier of Electrical and Electronic Components

Click to view similar products for [Headers & Wire Housings](#) category:

Click to view products by [Harwin](#) manufacturer:

Other Similar products are found below :

[892-18-020-10-001101](#) [58102-G61-06LF](#) [582553-1](#) [0009485154](#) [009176003701906](#) [0050291907](#) [LY20-4P-DT1-P1E-BR](#) [02.125.8002.8](#)
[609-3404](#) [61062-3](#) [622-0430](#) [622-3653LF](#) [63453-116](#) [636-1030](#) [636-1427](#) [636-3427](#) [636-4007](#) [641938-9](#) [641991-4](#) [644827-2](#) [65817-010LF](#)
[65817-015LF](#) [65863-015LF](#) [66207-023LF](#) [67095-007LF](#) [67601157](#) [68648-049](#) [70.362.1628.0](#) [70-4210](#) [70-4226B](#) [70-4853B](#) [707-5020](#) [707-5028](#) [71.350.2428.0](#) [71918-208LF](#) [71961-016LF](#) [733-134](#) [733-162](#) [754199-000](#) [760-3052](#) [787-8014-00](#) [79531-3000](#) [FCN-360C032-B](#) [FCN-367T-T012/H](#) [FCN-723D010/2](#) [80.063.4001.1](#) [800-90-001-10-001000](#) [800-90-010-10-002000](#) [801-43-002-10-013000](#) [801-43-006-10-002000](#)