

Customer Information Sheet

DRAWING No.: M80-MCXXXMI-XX-XXXXL

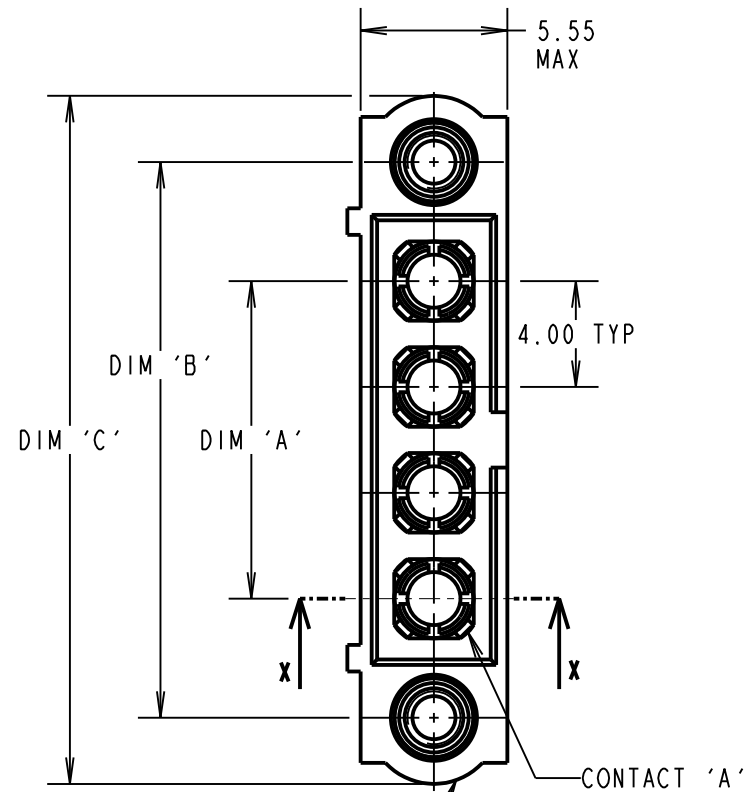
IF IN DOUBT - ASK

©

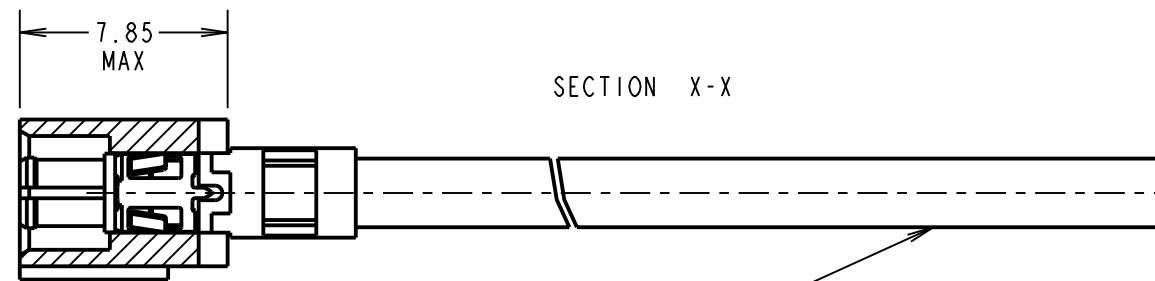
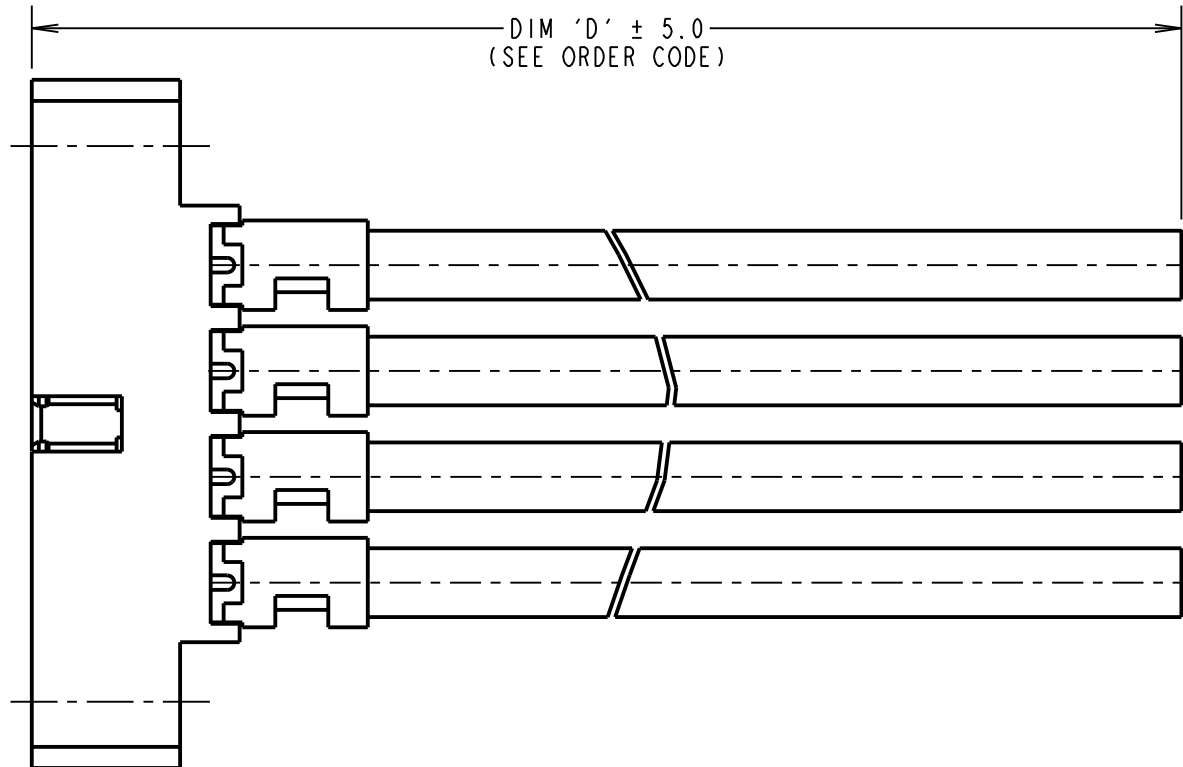
NOT TO SCALE

THIRD ANGLE PROJECTION

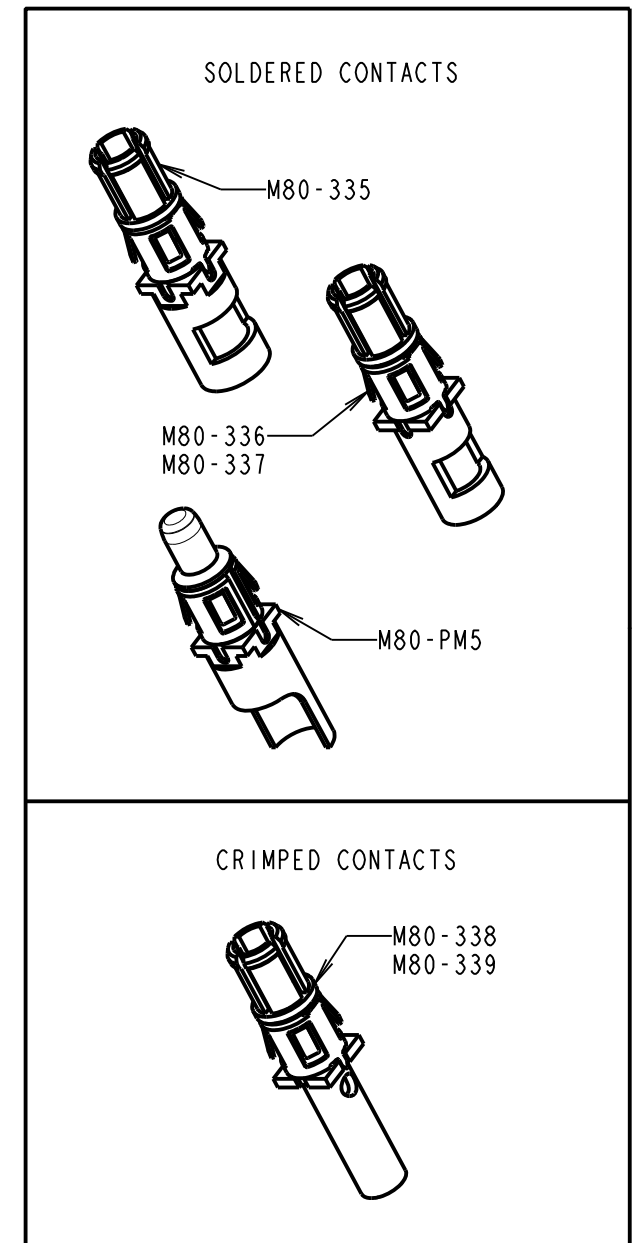
ALL DIMENSIONS IN mm



MALE MOULDING (1-OFF):
SEE ORDER CODE FOR TOTAL
No. OF CONTACTS



WHITE PTFE WIRE
SEE C049XX COMPONENT SPECIFICATION
FOR WIRE TYPE
(SEE ORDER CODE FOR GAUGES)



- NOTES:
1. CABLE ASSEMBLIES ARE BULK PACKED IN BAGS.
2. FOR COMPLETE SPECIFICATION SEE COMPONENT SPECIFICATION C005XX AND C049XX (LATEST ISSUES).

| DIMENSION | MEASUREMENT |
|-----------|------------------------------|
| DIM 'A' | (4 x No. OF CONTACTS) - 4.00 |
| DIM 'B' | (4 x No. OF CONTACTS) + 5.00 |
| DIM 'C' | (4 x No. OF CONTACTS) + 10.0 |

EXAMPLE PART No.:
2 CONTACT CONNECTOR WITH 300mm OF 20AWG WIRE =
M80-MC339MI-02-0300L
10 CONTACT CONNECTOR WITH 150mm OF 10AWG WIRE =
M80-MCPM5MI-10-0150L

ORDER CODE: M80-MCXXXMI-XX-XXXXL

- POWER CONTACT: _____
335 = POWER CONTACT SOLDER 12AWG M80-335
336 = POWER CONTACT SOLDER 14AWG M80-336
337 = POWER CONTACT SOLDER 16AWG M80-337
338 = POWER CONTACT CRIMP 18AWG M80-338
339 = POWER CONTACT CRIMP 20AWG M80-339
PM5 = POWER CONTACT SOLDER 10AWG M80-PM5

DIM 'D' LENGTH: _____
0060 = 60mm MIN
9999 = 9999mm MAX
(SEE TABLE FOR EXAMPLES)

TOTAL No. OF CONTACTS: _____
02 TO 12

| | | | |
|-----------------------|------|----------|-------|
| RTP | 3 | 11.03.21 | 30101 |
| NAME | ISS. | DATE | CN/CO |
| APPROVED: R. PORTLOCK | | | |
| CHECKED: M. RUDKIN | | | |
| DRAWN: F. MCGOWAN | | | |
| CUSTOMER REF.: | | | |
| ASSEMBLY DRG: | | | |

HARWIN

www.harwin.com
technical@harwin.com

THIS DRAWING AND ANY
INFORMATION OR DESCRIPTIVE
MATTER SET OUT HEREON ARE
CONFIDENTIAL AND COPYRIGHT
PROPERTY OF THE HARWIN
GROUP AND MUST NOT BE
DISCLOSED, LOANED, COPIED
OR USED FOR MANUFACTURING,
TENDERING OR FOR ANY
OTHER PURPOSE WITHOUT
THEIR WRITTEN PERMISSION.

TOLERANCES
X. = ±1mm
X.X = ±0.50mm
X.XX = ±0.20mm
X.XXX = ±0.01mm
ANGLES = ±5°
UNLESS STATED

MATERIAL: SEE ABOVE
FINISH: SEE ABOVE
S/AREA: mm²

TITLE: DATAMATE POWER MALE
SINGLE-ENDED CABLE ASSEMBLY
WITH JACKSCREW

DRAWING NUMBER:
M80-MCXXXMI-XX-XXXXL

SHT
2 OF 2

X-ON Electronics

Largest Supplier of Electrical and Electronic Components

Click to view similar products for [Rectangular Cable Assemblies](#) category:

Click to view products by [Harwin](#) manufacturer:

Other Similar products are found below :

[MC320E-N-23](#) [G125FC10668L0-0300L](#) [G125FC10668L0-0150L](#) [G125-FC11068L0-0150L](#) [G125-FC11068L0-0300L](#) [HQCD-090-05.00-](#)
[TTR-TTR-1-B](#) [M80-FC23468FC-0150L](#) [215322-2032](#) [215323-2052](#) [215323-1032](#) [215323-2031](#) [SFSDT-35-28-H-24.00-SR](#) [SFSDT-30-28-](#)
[H-24.00-SR](#) [SFSDT-50-28-H-24.00-SR](#) [S1SS-05-28-GF-10.00-S](#) [SMSD-05-24-L-06.00-D-K-KDX](#) [ERCDCD-030-11.81-TEU-TED-1-D](#)
[CABLE-PH10](#) [CABLE-EH04](#) [vrw-05-20-50-01g-000-e090](#) [MP-2J1-025-PS1-005M](#) [CABLE-PH04](#) [27ZRO-B-1A](#) [M300-FC11005F2-0450L](#)
[M300-FC21005F2-0450L](#) [M80-FC305F1-04-0300F1](#) [45130-0401](#) [45130-0210](#) [45130-0410](#) [45111-0402](#) [45111-0603](#) [15134-0302](#) [15134-](#)
[0401](#) [15134-0803](#) [15134-0801](#) [45111-0403](#) [15132-0403](#) [15131-0403](#) [15134-1003](#) [15134-1000](#) [45135-0603](#) [45135-0401](#) [45132-0610](#) [15134-](#)
[1002](#) [45135-0610](#) [45132-0403](#) [15134-1203](#) [15135-0806](#) [15134-0300](#) [15134-1202](#)