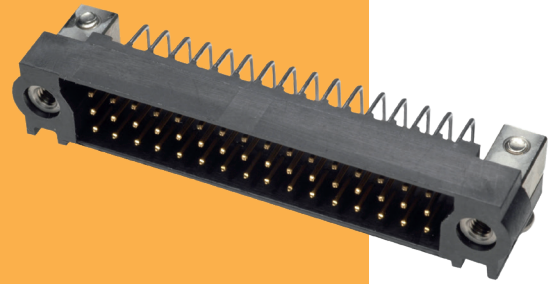


Datamate J-Tek 3-Row Connectors

Male Horizontal Throughboard

- ❖ Board Mount screws to be tightened to a maximum torque of 23cmN.
- ❖ Suitable for motherboard/daughterboard configurations.
- ❖ Fully shrouded contacts, polarized housings.
- ❖ All contacts are gold finish for full RoHS compliance.
- ❖ Mates with all Datamate 3-Row female connectors with compatible jackscrews.

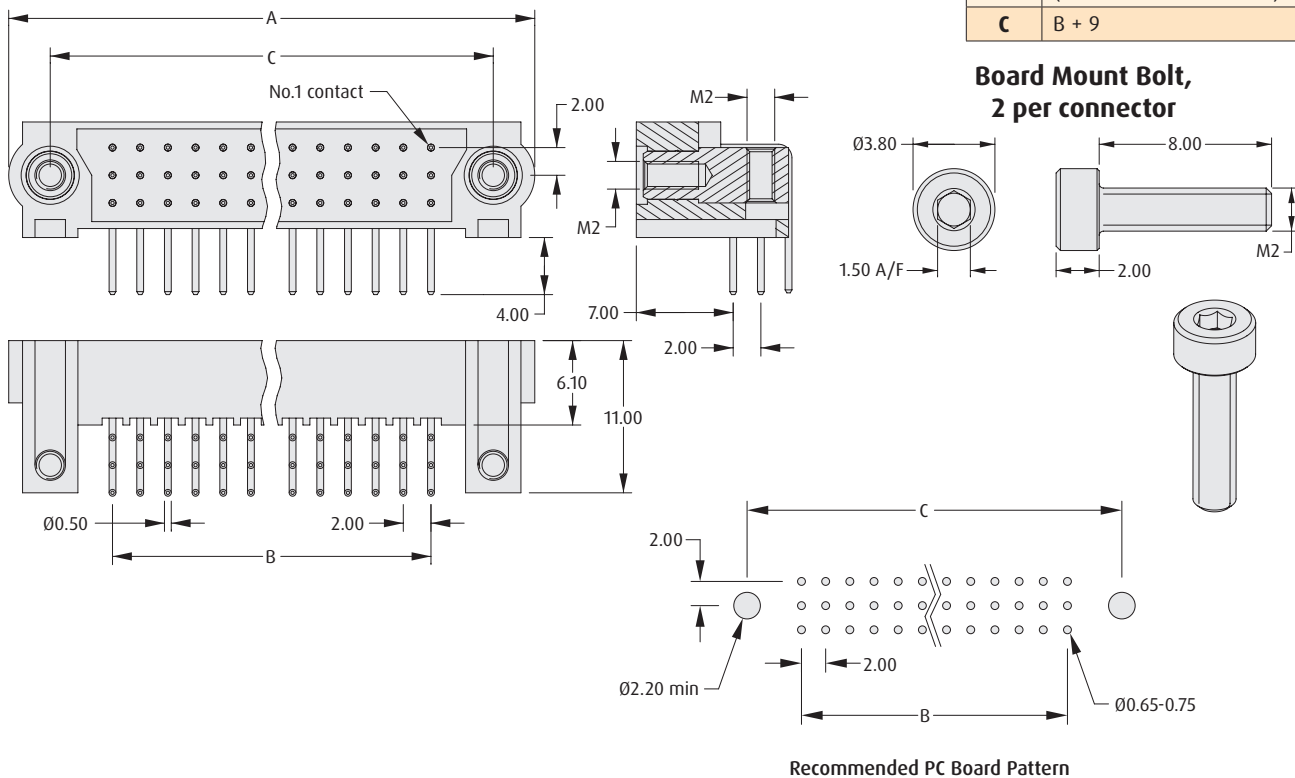


DATAMATE J-TEK 3-ROW

MALE HORIZONTAL

CALCULATION

A	B + 15
B	(Total no. of contacts - 3) x 2/3
C	B + 9



HOW TO ORDER

M83 - LM L3 M7 N XX - 0000 - 000

SERIES CODE

TYPE

L3 4mm Tail

TOTAL NO. OF CONTACTS

18, 27, 36, 54, 60, 96

JACKSCREW

M7 Hex Socket Board Mount

All dimensions in mm.

X-ON Electronics

Largest Supplier of Electrical and Electronic Components

Click to view similar products for [Headers & Wire Housings](#) category:

Click to view products by [Harwin](#) manufacturer:

Other Similar products are found below :

[892-18-020-10-001101](#) [58102-G61-06LF](#) [582553-1](#) [0009485154](#) [009176003701906](#) [0050291907](#) [LY20-4P-DT1-P1E-BR](#) [02.125.8002.8](#)
[609-3404](#) [61062-3](#) [622-0430](#) [622-3653LF](#) [63453-116](#) [636-1030](#) [636-1427](#) [636-3427](#) [636-4007](#) [641938-9](#) [641991-4](#) [644827-2](#) [65817-010LF](#)
[65817-015LF](#) [65863-015LF](#) [66207-023LF](#) [67095-007LF](#) [67601157](#) [68648-049](#) [70.362.1628.0](#) [70-4210](#) [70-4226B](#) [70-4853B](#) [707-5020](#) [707-](#)
[5028](#) [71.350.2428.0](#) [71918-208LF](#) [71961-016LF](#) [733-134](#) [733-162](#) [754199-000](#) [760-3052](#) [787-8014-00](#) [79531-3000](#) [FCN-360C032-B](#) [FCN-](#)
[367T-T012/H](#) [FCN-723D010/2](#) [80.063.4001.1](#) [800-90-001-10-001000](#) [800-90-010-10-002000](#) [801-43-002-10-013000](#) [801-43-006-10-002000](#)