

# Customer Information Sheet

DRAWING No.: P1113XX3

SHEET 2 OF 2

IF IN DOUBT - ASK

(C)

NOT TO SCALE

THIRD ANGLE PROJECTION

ALL DIMENSIONS IN mm

**SPECIFICATIONS:**

**MATERIAL:**

PLUNGER = P1113CA3, P1113CV3 = BRASS  
 P1113SS3 = HIGH CARBON STEEL

BARREL = BRASS

SPRING = SPRING STEEL

**FINISH:**

**PLUNGER:**

P1113CA3, P1113CV3 = 0.25µ MIN GOLD  
 OVER 2.0µ MIN NICKEL

P1113SS3 = 2.0µ MIN NICKEL OVER

BARREL = 0.25µ MIN GOLD OVER 0.5µ COPPER

SPRING = GOLD PLATED

**ELECTRICAL:**

CURRENT RATING = 2A MAX

CONTACT RESISTANCE = 50mΩ MAX

**MECHANICAL:**

DURABILITY = 100,000 CYCLES

FULL TRAVEL = 3.18mm

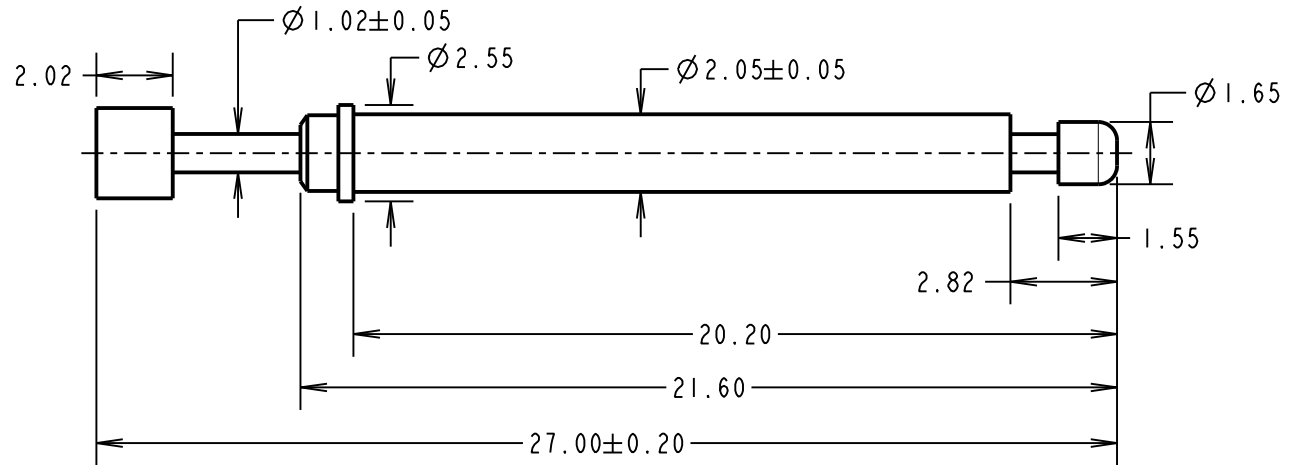
**SPRING FORCE:**

FULL TRAVEL = 0.75N ±0.25N (76.5g ±33%)

2.20mm TRAVEL = 0.54N ±0.11N (55g ±20%)

**ENVIRONMENTAL:**

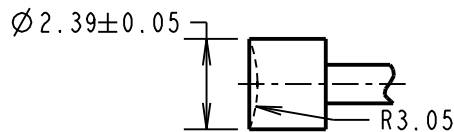
TEMPERATURE RANGE = -40°C TO +180°C



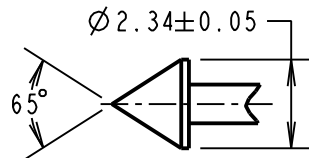
**NOTES:**

1. RECOMMENDED CLEARANCE HOLE SIZE = Ø2.20±0.05mm.  
 RECOMMENDED INTERFERENCE HOLE SIZE = Ø2.00mm.
2. SUITABLE FOR A MINIMUM DISTANCE BETWEEN CENTRES OF 3.00mm.
3. THIS PART IS SIMILAR TO P1113XX2 APART FROM POWER RATING THAT WAS 5A MAX AND MATERIAL / FINISH OF SPRING AND PLUNGER VARIANT P1113SS3.

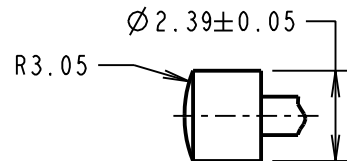
**PROBE HEAD VARIANTS**



CONCAVE RADIUS HEAD  
**P1113CA3**



CONVEX HEAD  
**P1113SS3**



CONVEX RADIUS HEAD  
**P1113CV3**

ORDER CODE:  
**P1113XX3**  
 PROBE HEAD \_\_\_\_\_  
 VARIANT (SEE BELOW)

SB	6	08.11.17	20842
NAME	ISS.	DATE	C/NOTE
APPROVED:		S.BENNETT	
CHECKED:		M.PLESTED	
DRAWN:		M. G. PLESTED	
CUSTOMER REF.:			
ASSEMBLY DRG:			

**HARWIN**

www.harwin.com  
 technical@harwin.com

THIS DRAWING AND ANY INFORMATION OR DESCRIPTIVE MATTER SET OUT HEREON ARE CONFIDENTIAL AND COPYRIGHT PROPERTY OF THE HARWIN GROUP AND MUST NOT BE DISCLOSED, LOANED, COPIED OR USED FOR MANUFACTURING, TENDERING OR FOR ANY OTHER PURPOSE WITHOUT THEIR WRITTEN PERMISSION.

**TOLERANCES**  
 X. = ±1mm  
 X.X = ±0.50mm  
 X.XX = ±0.10mm  
 X.XXX = ±0.01mm  
 ANGLES = ±5°  
 UNLESS STATED

**MATERIAL:**  
 SEE ABOVE

**FINISH:** SEE ABOVE

**S/AREA:** mm<sup>2</sup>

**TITLE:**  
 3.00mm MIN. CENTRE  
 ONE-PIECE SPRING PROBE

**DRAWING NUMBER:**  
**P1113XX3**

SHT  
 2 OF 2

## X-ON Electronics

Largest Supplier of Electrical and Electronic Components

*Click to view similar products for [Test Probes](#) category:*

*Click to view products by [Harwin](#) manufacturer:*

Other Similar products are found below :

[6214](#) [6474](#) [815003](#) [923832-BK-B](#) [P-KIT-1](#) [KT-MS001](#) [925250-R](#) [923848-C](#) [973368101](#) [972318101](#) [972318100](#) [MXHQ87WJ3000](#) [PK106-3](#) [PK2-5MM-102](#) [TAS90](#) [VL1735/45](#) [973368100](#) [972327100](#) [972327101](#) [973995100](#) [973995101](#) [CT3982B-120](#) [MO50-PINS](#) [CT4386](#) [PP023-1](#) [PK1-5MM-127](#) [PP026-1](#) [PK103](#) [PK-ZS-013](#) [P6139B-PK10](#) [PQ215](#) [PQ219](#) [PQ218](#) [RT-ZI10C](#) [TT-SI 8071](#) [TT-SI 8050](#) [TT-SI 8010A](#) [TT-SI 7005](#) [GE.3421](#) [GE.3121](#) [GE.1511](#) [GE.1521](#) [GE.2511](#) [HVP15B](#) [TT-SI7002](#) [4005](#) [4011](#) [4012](#) [4013](#) [4014](#)