

# Customer Information Sheet

DRAWING No.: S01-806005KIT

SHEET 2 OF 2

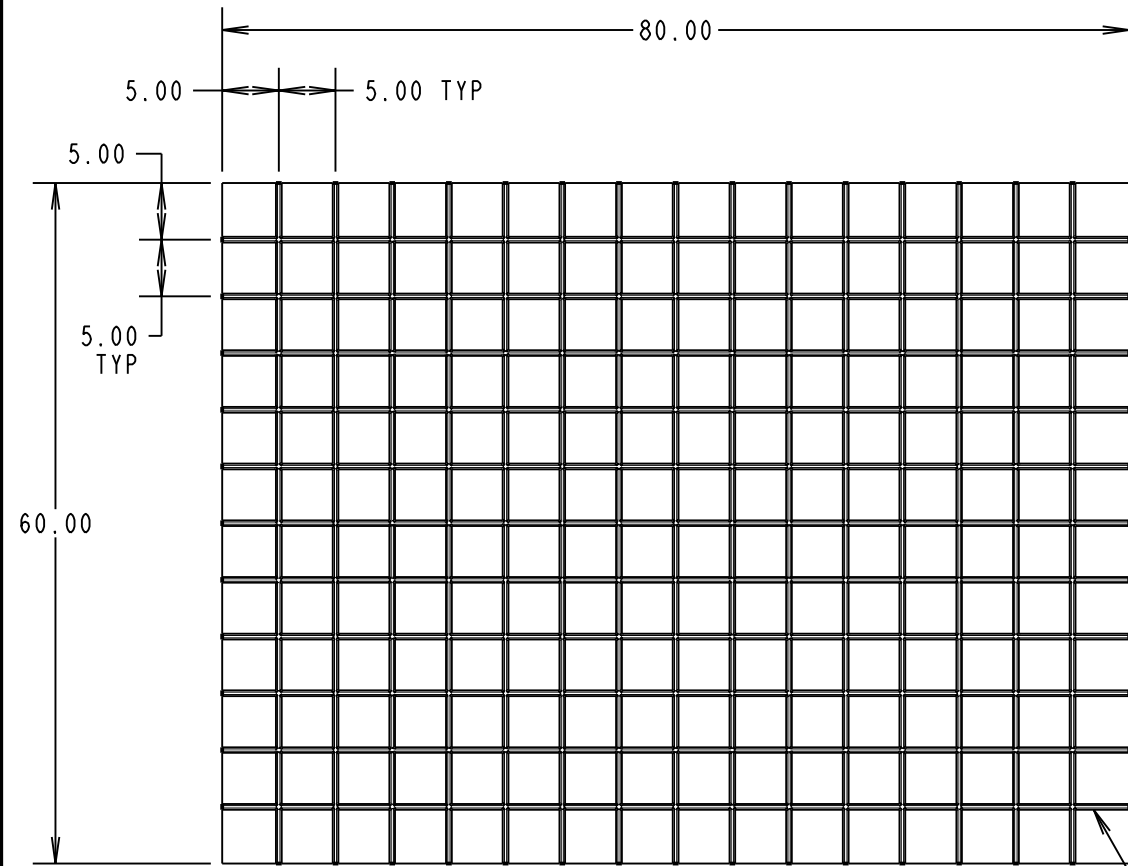
IF IN DOUBT - ASK

©

NOT TO SCALE

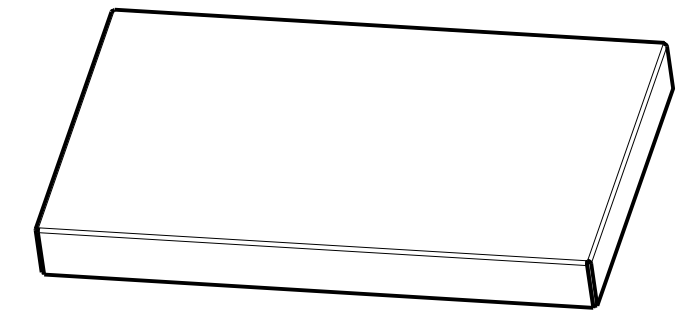
THIRD ANGLE PROJECTION

ALL DIMENSIONS IN mm

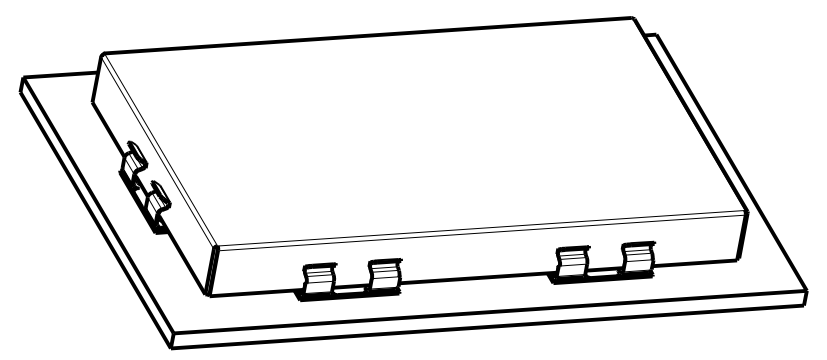


ORDER CODE:  
**S01-806005KIT**

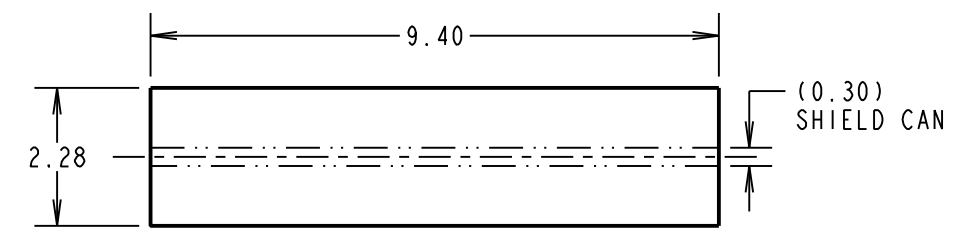
CAN SHEET LENGTH:  
CAN SHEET WIDTH:  
CAN ETCHING PITCH:



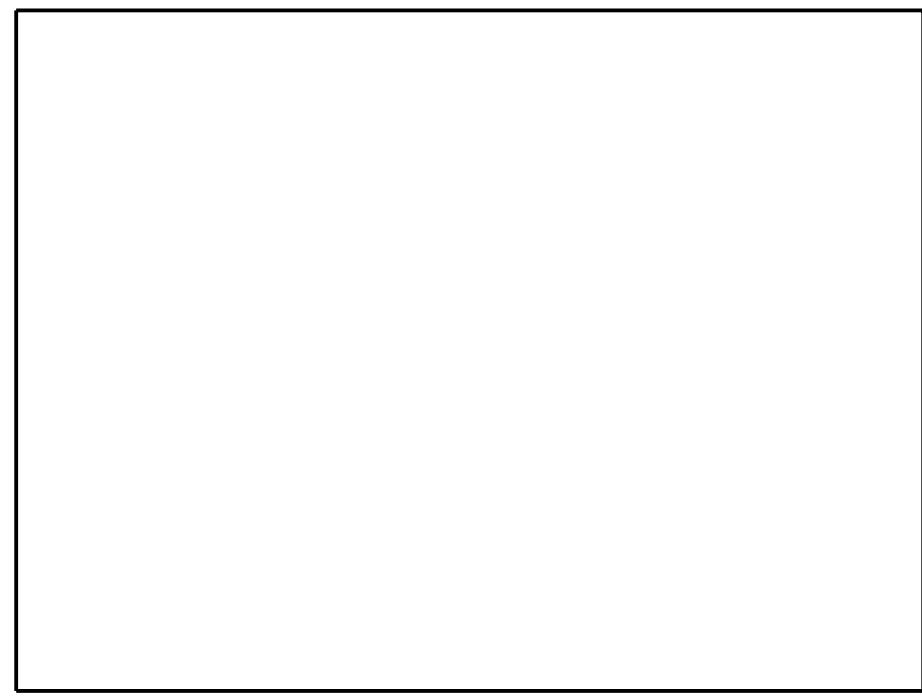
VIEW OF FOLDED CAN FOR ILLUSTRATION ONLY



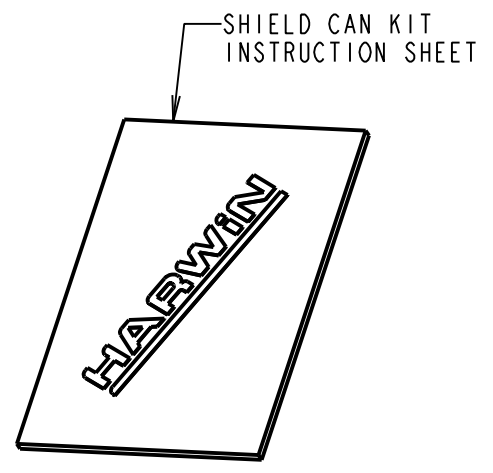
ETCHED CAN SHEET



RECOMMENDED PAD LAYOUT FOR S1711-46R

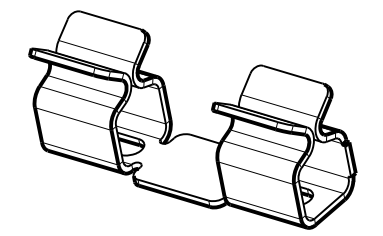


1/2 ETCHED LINES FOR FOLDING

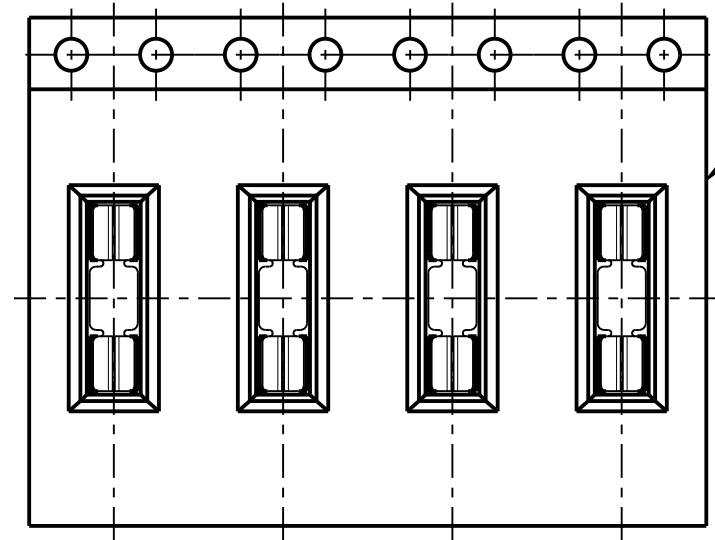


SHIELD CAN KIT INSTRUCTION SHEET

NICKEL SILVER, HALF HARD NS106, TO BS1653 0.30mm THICK (UNPLATED)



RFI SHIELD CLIPS



- NOTES:
- S01-806005KIT IS COMPOSED OF:
    - 1 x Y0905-00: CLEAR HARWIN BOX,
    - 2 x S01-806005SHEET: ETCHED NICKEL SILVER CAN SHEETS,
    - 24 x S1711-46R: RFI SHIELD CLIPS IN STRIPS OF 12,
    - 1 x IS-39: SHIELD CAN KIT INSTRUCTION SHEET.
  - FOR COMPONENT DETAILS OF RFI SHIELD CLIP, SEE DRAWING S1711-46R.

SB	3	19.08.14	12554
NAME	ISS.	DATE	C/NOTE
APPROVED:		S.BENNETT	
CHECKED:		M.PLESTED	
DRAWN:		S.BENNETT	
CUSTOMER REF.:			
ASSEMBLY DRG:			

<p>www.harwin.com technical@harwin.com</p>	<p>THIS DRAWING AND ANY INFORMATION OR DESCRIPTIVE MATTER SET OUT HEREON ARE CONFIDENTIAL AND COPYRIGHT PROPERTY OF THE HARWIN GROUP AND MUST NOT BE DISCLOSED, LOANED, COPIED OR USED FOR MANUFACTURING, TENDERING OR FOR ANY OTHER PURPOSE WITHOUT THEIR WRITTEN PERMISSION.</p>	<p>TOLERANCES</p> <p>X. = ±1mm X.X = ±0.50mm X.XX = ±0.10mm X.XXX = ±0.01mm</p> <p>ANGLES = ±5° UNLESS STATED</p>	<p>MATERIAL:</p> <p>SEE ABOVE</p>	<p>TITLE:</p> <p>EZ-BOARDWARE SHIELD CAN AND SMT RFI SHIELD CLIP KIT</p>
			<p>FINISH: SEE ABOVE</p>	<p>DRAWING NUMBER:</p> <p><b>S01-806005KIT</b></p>
			<p>S/AREA: mm<sup>2</sup></p>	<p>SHT 2 OF 2</p>

# Shield Can Kit Instruction Sheet

## S01-806005KIT



IS-39 Issue: 2 Date: 23/03/2015



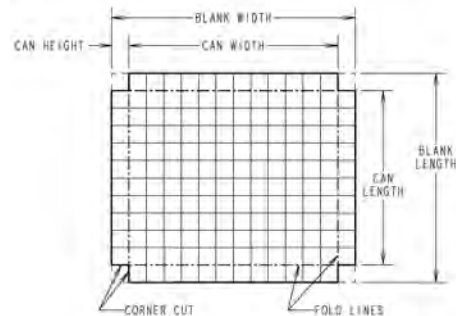
**Your Kit contains:**

- 2 x Shield Can Sheets
- 24 x RFI Shield Clips
- 1 x Instruction Sheet

**Tools required:**

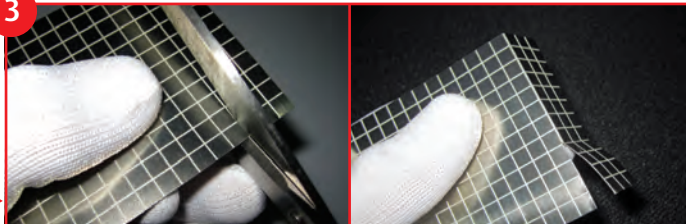
- A pair of scissors
- A rule
- A solid, flat work surface

2



Use this diagram as a guide when cutting your etched Shield Can Sheets.

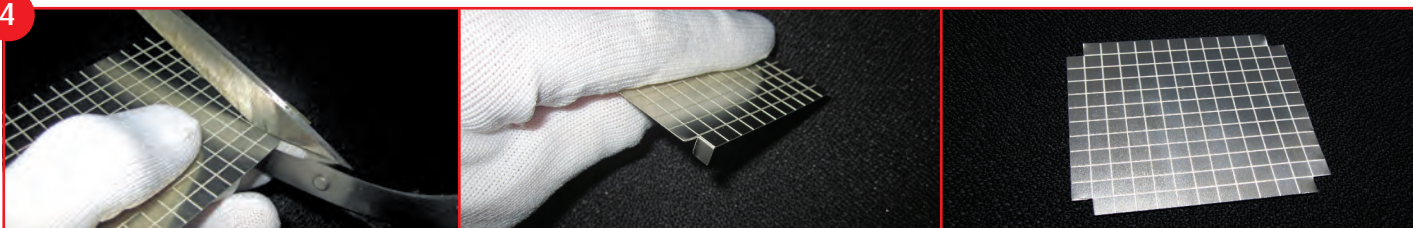
3



**Creating the blank:**

- Cut along the etch lines to create blank size (Step 2).
- It's not necessary to cut all the way; fold the surplus section back and forth until it breaks away.

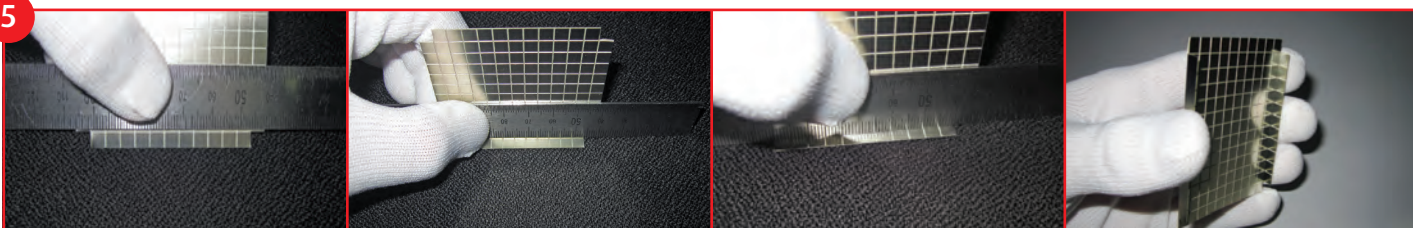
4



**Creating the flat pattern:**

- Remove corners of the sheet; one grid square equals 5mm can height.
- Cut one edge with scissors, then fold back and forth along the other edge until the square breaks away.
- Repeat on the remaining three corners.

5



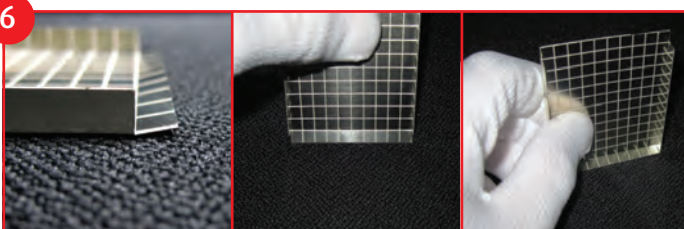
**Forming:**

- Securely hold the rule along your fold line.
- Apply force to bend the sheet against the work surface.
- Ensure that the side is bent to 90° with etching inside the can.
- Repeat on the opposite side.

**Note:**

Maintaining your hold on the rule whilst bending will ensure that the edge has a sharper form.

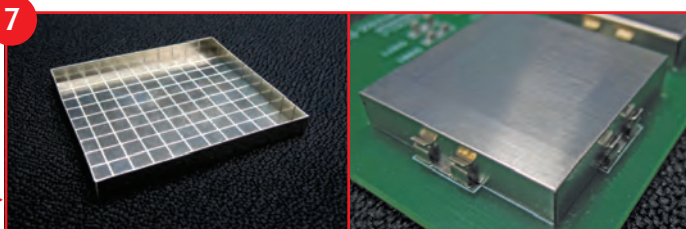
6



**Forming cont.:**

- On the third side of the can, apply light force with hands to the fold line; forming a slight bend (above).
- Using your work surface, push the side flat against it (90° to top surface).
- Repeat on the opposite side.

7



You now have a finished can! Use the can with S1711-46R RFI Shield Clips provided.

Harwin recommend S1711-46R clips are reflow soldered to a PCB.

## X-ON Electronics

Largest Supplier of Electrical and Electronic Components

*Click to view similar products for [EMI Kits](#) category:*

*Click to view products by [Harwin](#) manufacturer:*

Other Similar products are found below :

[GS PROTOTYPE KIT-COMM](#) [RFID Flexield](#) [SAMPLE SET-E1](#) [KIT02](#) [KIT04](#) [FSLK-CARRY](#) [KIT03](#) [KIT18](#) [EMC-A205](#) [EKDMGN03A-KIT](#) [EKDMAT01A-KIT](#) [EKDMGN01A-KIT](#) [331001](#) [742700](#) [0199000029](#) [EK28B0032](#) [EK33B0011](#) [0199001401](#) [EMI ENG KIT 01](#) [EMI ENG KIT 02](#) [FXS ENG KIT 02](#) [FXS ENG KIT 03](#) [FXS ENG KIT 04](#) [MS-ENG-KIT21](#) [EKDMAT03-KIT](#) [EKDMGN02A-KIT](#) [Magnetic Sheet Sample kit](#) [742711](#) [742790](#) [742791](#) [0199000028](#) [0199000032](#) [0199000034](#) [742841](#) [0199000043](#) [EMC-A201](#) [742722](#) [782013](#) [7449982](#) [744998](#) [B72482S9999X2](#) [0199000005](#) [0199000017](#) [0199000018](#) [0199000019](#) [0199000027](#) [0199000030](#) [0199000031](#) [0199000033](#) [0199000039](#) [0199010301](#)