

Customer Information Sheet

DRAWING No.: S409-XX / S410-XX

SHEET 3 OF 4

IF IN DOUBT - ASK

(C)

NOT TO SCALE

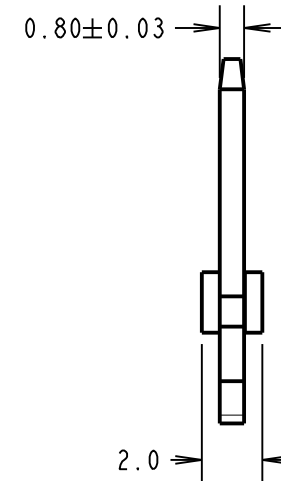
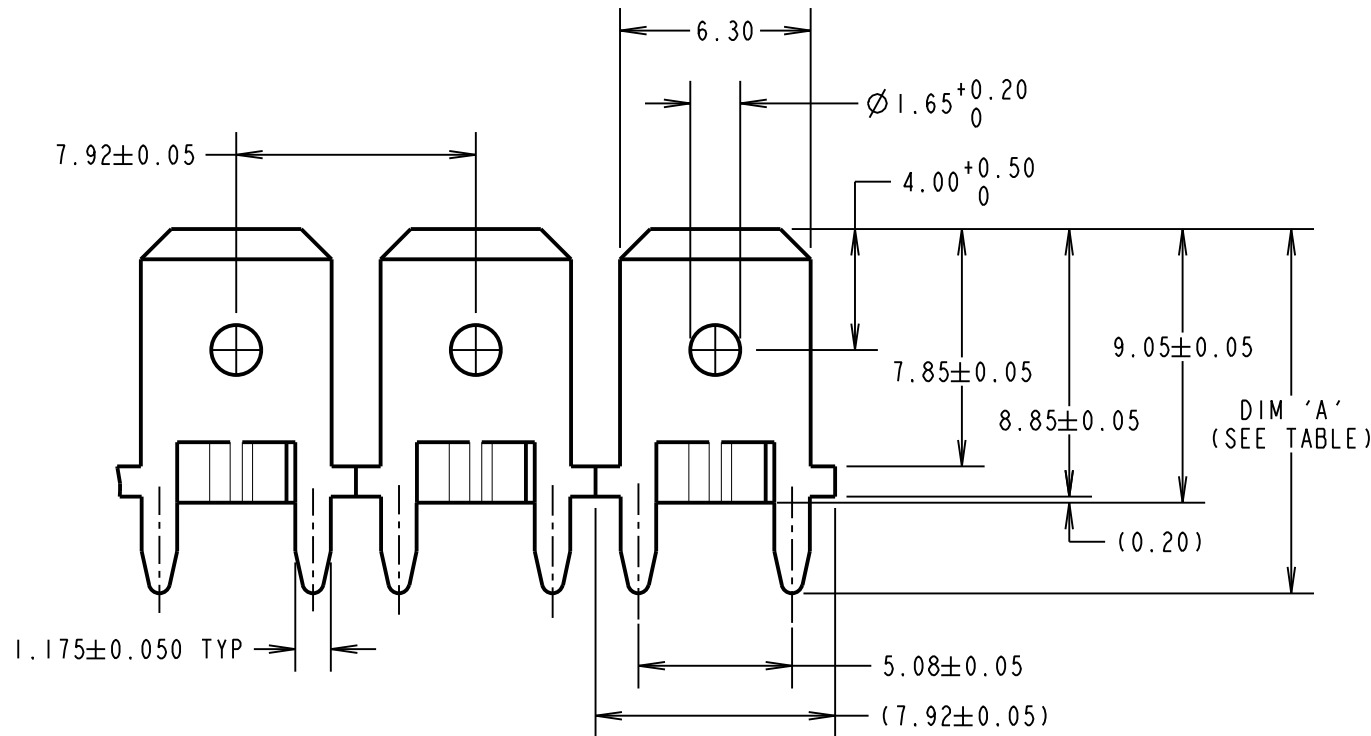
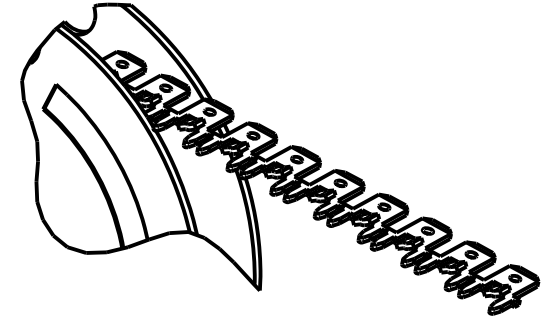
THIRD ANGLE PROJECTION

ALL DIMENSIONS IN mm

SEE NOTE 1



COMPONENTS SHOWN REELED
READY FOR INSERTION



NOTE:

1. ANTI-ROCKING FEATURE.
2. QUANTITY OF TABS PER COIL = 10K.
TOTAL WEIGHT PER COIL = 6.153kg.
3. RECOMMENDED MOUNTING HOLE SIZE = $\varnothing 1.25 \pm 0.06\text{mm}$.
4. PLATING THICKNESS = 4μ 100% TIN.

PART No.	DIM 'A'	PCB THICKNESS
S409-XX	12.05	1.60
S410-XX	12.85	2.40

ORDER CODE:

S4XX-46

TYPE 09 OR 10
(SEE TABLE)

SB	25	09.11.11	11532
NAME	ISS.	DATE	C/NOTE
APPROVED:		S. BENNETT	
CHECKED:		S. FLOWER	
DRAWN:		I. SANDY	
CUSTOMER REF.:			
ASSEMBLY DRG:			

HARWIN

www.harwin.com
technical@harwin.com

THIS DRAWING AND ANY INFORMATION OR DESCRIPTIVE MATTER SET OUT HEREON ARE CONFIDENTIAL AND COPYRIGHT PROPERTY OF THE HARWIN GROUP AND MUST NOT BE DISCLOSED, LOANED, COPIED OR USED FOR MANUFACTURING, TENDERING OR FOR ANY OTHER PURPOSE WITHOUT THEIR WRITTEN PERMISSION.

TOLERANCES

X. = $\pm 1\text{mm}$
X.X = $\pm 0.25\text{mm}$
X.XX = $\pm 0.10\text{mm}$
X.XXX = $\pm 0.01\text{mm}$
ANGLES = $\pm 5^\circ$
UNLESS STATED

MATERIAL:

BRASS CW508L H150
TO BS EN 1652 (CuZn37 HARD)

FINISH: SEE ABOVE

S/AREA: mm²

TITLE:

6.3mm BLADE VERTICAL
REELED TAB TERMINAL

DRAWING NUMBER:

S409-46 / S410-46

SHT

3 OF 4

Customer Information Sheet

DRAWING No.: S409-XX / S410-XX

SHEET 4 OF 4

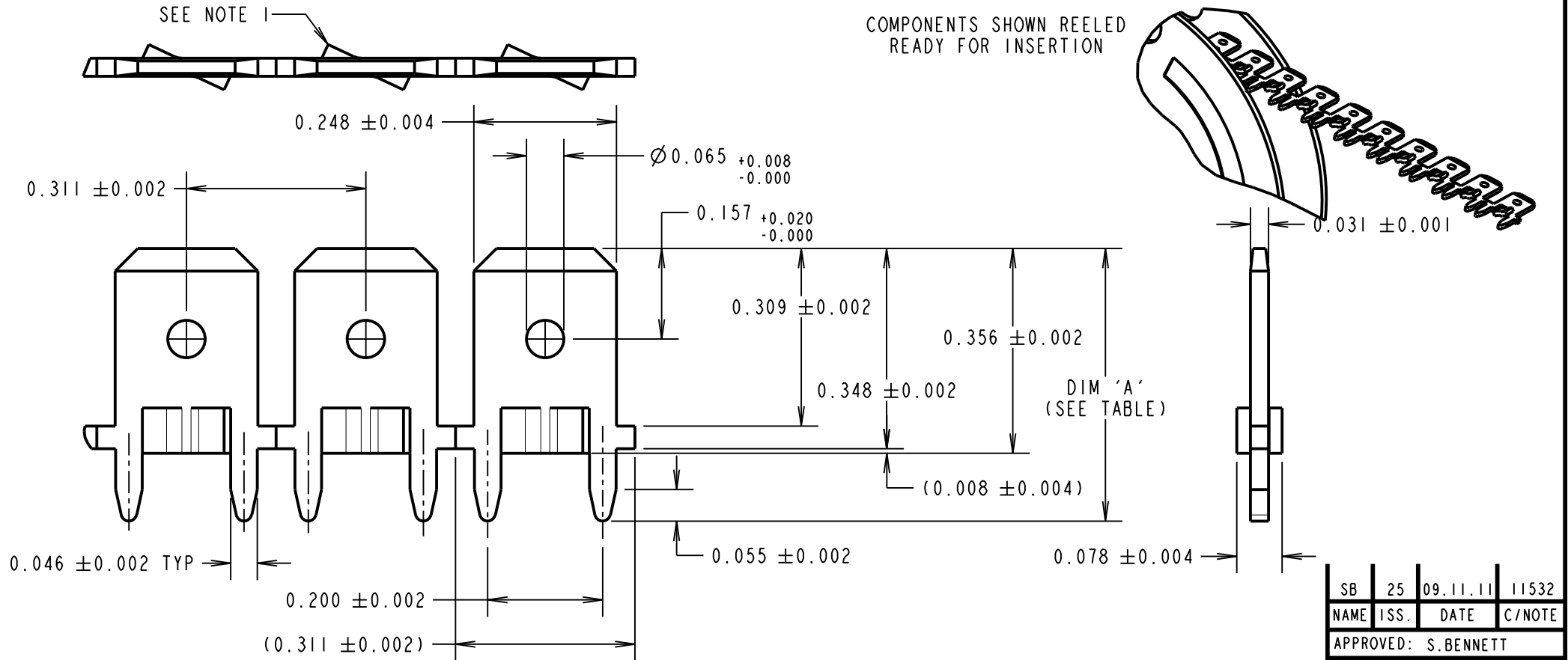
IF IN DOUBT - ASK

(C)

NOT TO SCALE

THIRD ANGLE PROJECTION

ALL DIMENSIONS IN ~~mm~~ INCHES



COMPONENTS SHOWN REELED
READY FOR INSERTION

NOTE:

1. ANTI-ROCKING FEATURE.
2. QUANTITY OF TABS PER COIL = 10K.
TOTAL WEIGHT PER COIL = 6.153kg.
3. RECOMMENDED MOUNTING HOLE SIZE = $\varnothing 0.049 \pm 0.0024$ ".
4. PLATING THICKNESS = 160 μ " 100% TIN.

PART No.	DIM 'A'	PCB THICKNESS
S409-XX	0.475	0.063
S410-XX	0.506	0.094

ORDER CODE:

S4XX-46

TYPE 09 OR 10
(SEE TABLE)

SB	25	09.11.11	11532
NAME	ISS.	DATE	C/NOTE
APPROVED: S.BENNETT			
CHECKED: S.FLOWER			
DRAWN: I. SANDY			
CUSTOMER REF.:			
ASSEMBLY DRG:			

HARWIN

www.harwin.com
technical@harwin.com

THIS DRAWING AND ANY INFORMATION OR DESCRIPTIVE MATTER SET OUT HEREON ARE CONFIDENTIAL AND COPYRIGHT PROPERTY OF THE HARWIN GROUP AND MUST NOT BE DISCLOSED, LOANED, COPIED OR USED FOR MANUFACTURING, TENDERING OR FOR ANY OTHER PURPOSE WITHOUT THEIR WRITTEN PERMISSION.

TOLERANCES

~~X = ±1mm
X.X = ±0.25mm
X.XX = ±0.10mm
X.XXX = ±0.01mm
ANGLES = ±5°
UNLESS STATED~~

MATERIAL:

BRASS CW508L H150
TO BS EN 1652 (CuZn37 HARD)

FINISH: SEE ABOVE

S/AREA: mm²

TITLE:

0.248" BLADE VERTICAL
REELED TAB TERMINAL

DRAWING NUMBER:

S409-46 / S410-46

SHT
4 OF 4

X-ON Electronics

Largest Supplier of Electrical and Electronic Components

Click to view similar products for [Terminals](#) category:

Click to view products by [Harwin](#) manufacturer:

Other Similar products are found below :

[00-054007-01074-6](#) [00-054007-70206-1](#) [00-054007-70210-8](#) [00-054007-70217-7](#) [00-054007-70226-9](#) [00-054007-70228-3](#) [00-054007-70248-1](#) [00-054007-70256-6](#) [00-054007-70301-3](#) [00-054007-70316-7](#) [00-054007-49560-4](#) [00-054007-70209-2](#) [00-054007-70225-2](#) [00-054007-70227-6](#) [00-054007-70231-3](#) [00-054007-70241-2](#) [00-054007-70242-9](#) [00-054007-70244-3](#) [00-054007-70246-7](#) [00-054007-70263-4](#) [00-054007-70288-7](#) [00-054007-70290-0](#) [00-054007-70300-6](#) [00-054007-70304-4](#) [01-2065-1-0216](#) [01-2900-1-04412](#) [00581P0075](#) [600TS-10](#) [60205-1](#) [604200-1](#) [605601-1](#) [60598-1-CUT-TAPE](#) [61314-6-C](#) [61810-3](#) [61-S](#) [62149-1](#) [626-0194](#) [62-NBM-A](#) [62-SN](#) [62-SP](#) [640179-1](#) [M55155/059I03](#) [M55155/079C01](#) [M55155/099H02](#) [M55155/109H01](#) [M55155/109H02](#) [M55155/12XH05](#) [M55155/16XH02](#) [M55155/29-5S](#) [M55155/29XJ08](#)