

Customer Information Sheet

DRAWING No.: S9091-46R

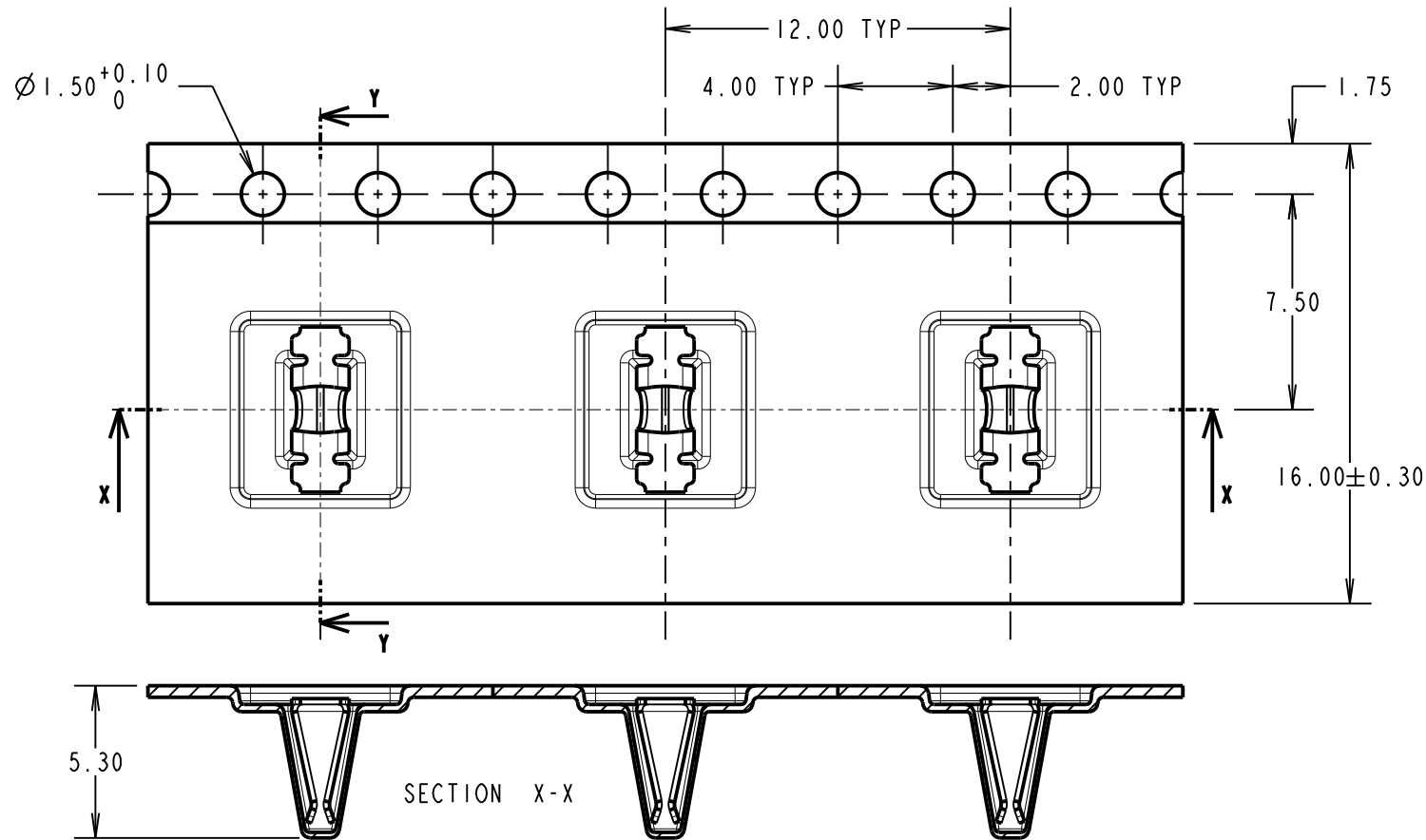
IF IN DOUBT - ASK

©

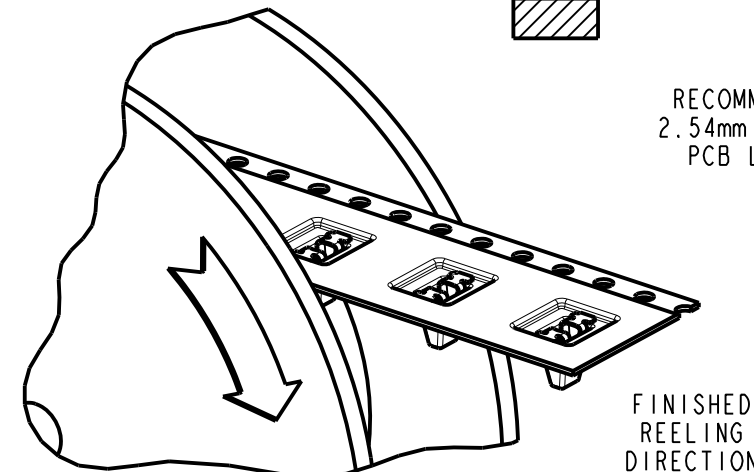
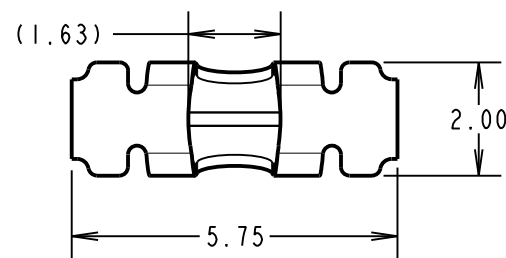
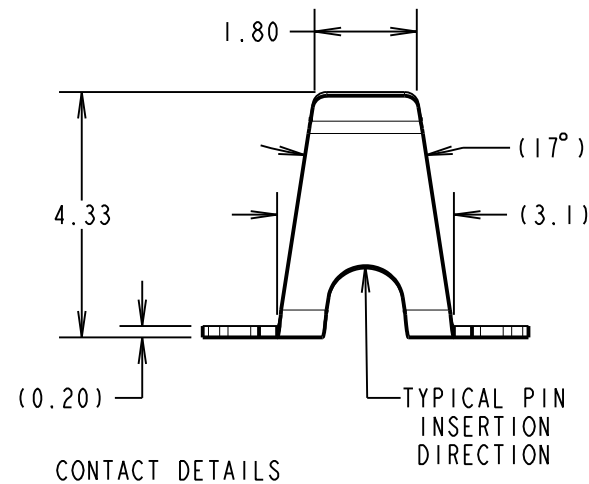
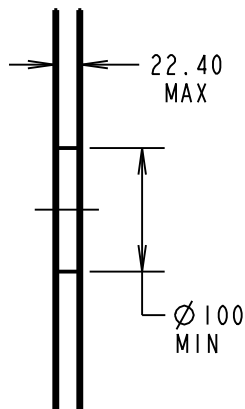
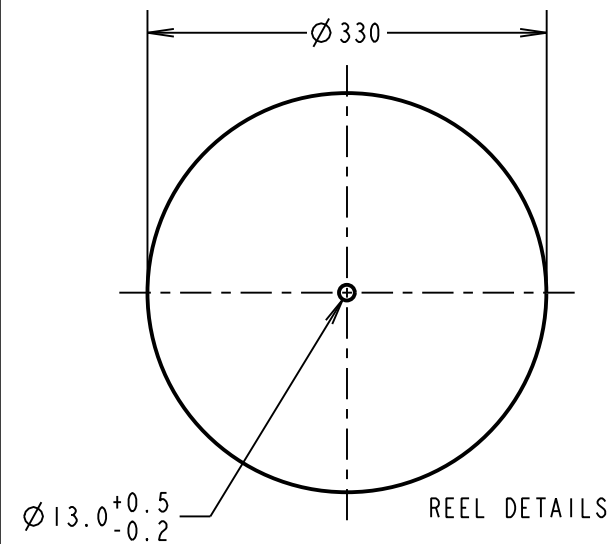
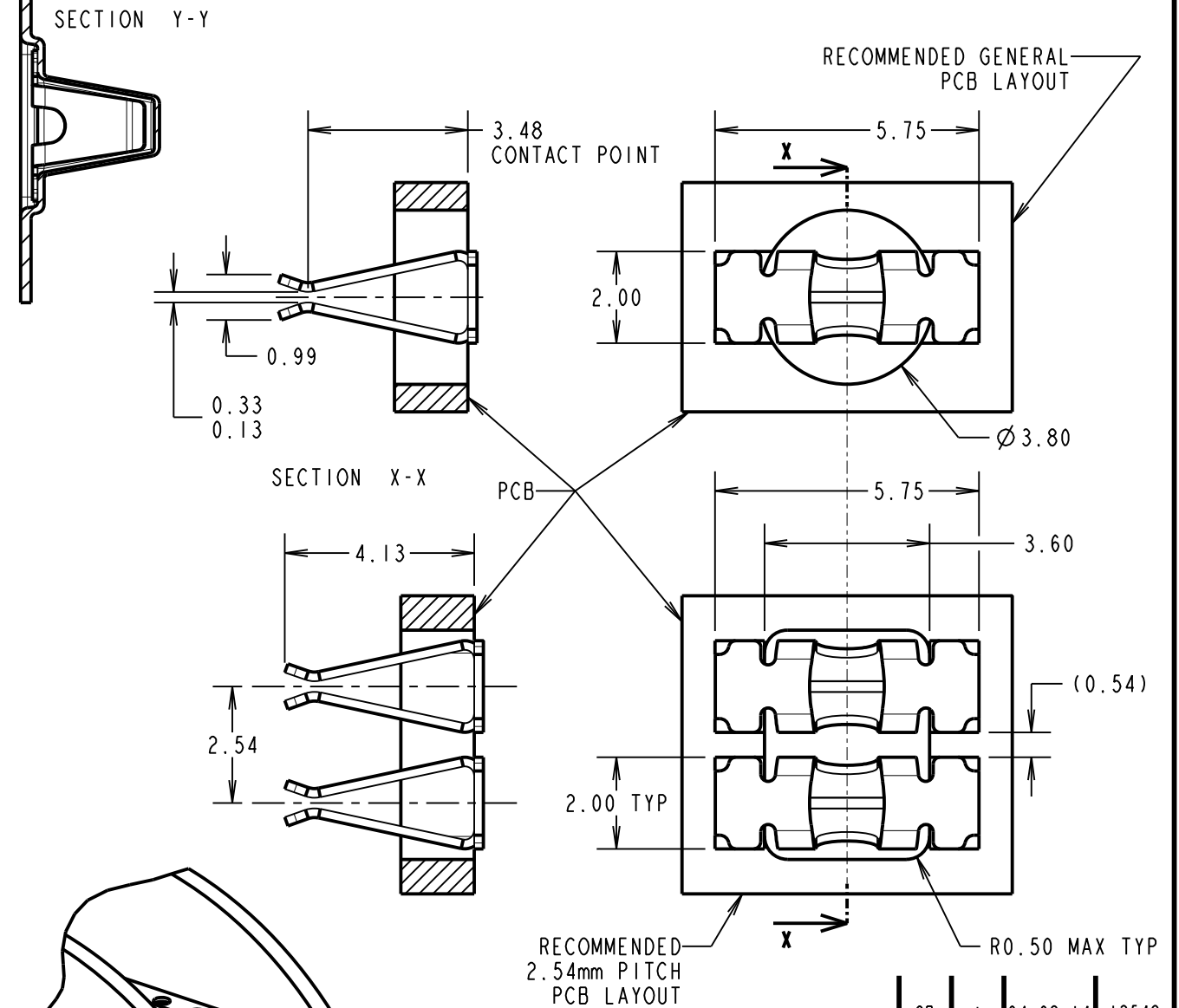
NOT TO SCALE

THIRD ANGLE PROJECTION

ALL DIMENSIONS IN mm



- NOTES:
1. QUANTITY OF COMPONENTS PER REEL = 900.
 2. THIS PRODUCT IS TAPED AND REELED IN GENERAL ACCORDANCE WITH EIA-481-2 (ELECTRONICS INDUSTRIES ASSOCIATION).
 3. RECOMMENDED MINIMUM PIN SIZE IS $\varnothing 0.80\text{mm}$ OR 0.80mm SQUARE. RECOMMENDED MAXIMUM PIN SIZE IS $\varnothing 1.50\text{mm}$ OR 1.50mm SQUARE.
 4. THROUGHOUT OPERATION, IT IS RECOMMENDED THAT THE MATING PIN IS KEPT CONSISTENT. THIS WILL REDUCE RISK OF PERFORMANCE CHANGES CAUSED BY PERMANENT SET FROM PREVIOUSLY USING A LARGER PIN.



COMPONENT SPECIFICATION:
 MATERIAL = PHOSPHOR BRONZE
 FINISH = 4.0-5.0 μ 100% TIN OVER 2.0-2.5 μ NICKEL
 ELECTRICAL:
 CURRENT RATING = 5A
 CONTACT RESISTANCE = 20m Ω MAX
 DURABILITY = 25 CYCLES
 MECHANICAL:
 MAX INSERTION FORCE WITH $\varnothing 1.00\text{mm}$ PIN = 8.0N
 MAX INSERTION FORCE WITH $\varnothing 1.50\text{mm}$ PIN = 17.0N
 MIN WITHDRAWAL FORCE WITH $\varnothing 1.00\text{mm}$ PIN = 0.5N
 MIN WITHDRAWAL FORCE WITH $\varnothing 1.50\text{mm}$ PIN = 1.0N
 ENVIRONMENTAL:
 OPERATING TEMPERATURE = -40°C TO +105°C

HARWIN
 www.harwin.com
 technical@harwin.com

THIS DRAWING AND ANY INFORMATION OR DESCRIPTIVE MATTER SET OUT HEREON ARE CONFIDENTIAL AND COPYRIGHT PROPERTY OF THE HARWIN GROUP AND MUST NOT BE DISCLOSED, LOANED, COPIED OR USED FOR MANUFACTURING, TENDERING OR FOR ANY OTHER PURPOSE WITHOUT THEIR WRITTEN PERMISSION.

TOLERANCES
 X. = $\pm 1\text{mm}$
 X.X = $\pm 0.25\text{mm}$
 X.XX = $\pm 0.10\text{mm}$
 X.XXX = $\pm 0.01\text{mm}$
 ANGLES = $\pm 5^\circ$
 UNLESS STATED

MATERIAL: SEE ABOVE
 FINISH: SEE ABOVE
 S/AREA: mm²

TITLE: SMT SOCKET CONTACT IN TAPE AND REEL
 DRAWING NUMBER: S9091-46R
 SB I 04.08.14 12548
 NAME ISS. DATE C/NOTE
 APPROVED: S.BENNETT
 CHECKED: S.FLOWER
 DRAWN: S.BENNETT
 CUSTOMER REF.:
 ASSEMBLY DRG:
 SHT 2 OF 2

X-ON Electronics

Largest Supplier of Electrical and Electronic Components

Click to view similar products for [Circuit Board Hardware - PCB category](#):

Click to view products by [Harwin manufacturer](#):

Other Similar products are found below :

[8919-0-00-15-00-00-03-0](#) [0135-0-15-01-30-27-04-0](#) [5970-1-15-01-32-14-04-0](#) [0149-0-15-15-30-27-04-0](#) [MBI 1 BLUE](#) [7305-0-15-15-47-14-10-0](#) [MLN 150/1 BLACK](#) [8579-0-15-80-11-27-10-0](#) [8579-1-15-15-11-27-10-0](#) [8830-0-15-01-22-14-10-0](#) [8836-0-00-21-00-00-03-0](#) [PRUEF 2 RED](#) [9976-0-00-00-00-00-03-0](#) [PW1616](#) [1215-3-05-00-00-00-01-0](#) [1231](#) [1303-0-15-15-47-14-04-0](#) [1404-3](#) [1404-4](#) [1406-4](#) [1407-3](#) [1406-3](#) [1407-4](#) [1408-3](#) [1424-4](#) [1427-3](#) [1419-4](#) [1426-4](#) [1548-103](#) [1938-0-00-00-00-00-03-0](#) [1942-0-00-00-00-00-03-0](#) [2101-3-00-44-00-00-07-0](#) [2108-2-00-50-00-00-07-0](#) [2109-2-00-44-00-00-07-0](#) [2110-2-00-44-00-00-07-0](#) [2111-2-00-00-00-00-07-0](#) [2113-4-00-44-00-00-07-0](#) [2301-3-00-44-00-00-07-0](#) [2308-1-00-50-00-00-07-0](#) [2313-2-00-00-00-00-07-0](#) [2315-2-01-44-00-00-07-0](#) [2333-1-00-50-00-00-07-0](#) [9000-0-00-00-00-00-03-0](#) [2506-2-00-50-00-00-07-0](#) [2507-2-01-44-00-00-07-0](#) [2508-2-00-44-00-00-07-0](#) [2561-2-00-44-00-00-07-0](#) [9220](#) [9234-0-15-15-30-14-10-0](#) [LAS S G BLACK](#)