

# Customer Information Sheet

DRAWING No.: S9101-46R

IF IN DOUBT - ASK

©

NOT TO SCALE

THIRD ANGLE PROJECTION

ALL DIMENSIONS IN mm

**NOTES:**

1. QUANTITY OF COMPONENTS PER REEL = 800.
2. TAPE MUST HAVE A MINIMUM OF 400mm LEADER AND A MINIMUM OF 160mm TRAILER.
3. THIS PRODUCT IS TAPED AND REELED IN GENERAL ACCORDANCE WITH EIA-481-2 (ELECTRONICS INDUSTRIES ASSOCIATION).
4. RECOMMENDED MINIMUM PIN SIZE IS  $\varnothing 1.10$  OR 1.10 SQUARE. RECOMMENDED MAXIMUM PIN SIZE IS  $\varnothing 1.80$  OR 1.40 SQUARE. MATING PIN SHOULD HAVE 30° LEAD IN CHAMFER WITH MAXIMUM STARTING DIAMETER OF  $\varnothing 1.10$ .

**COMPONENT SPECIFICATION:**

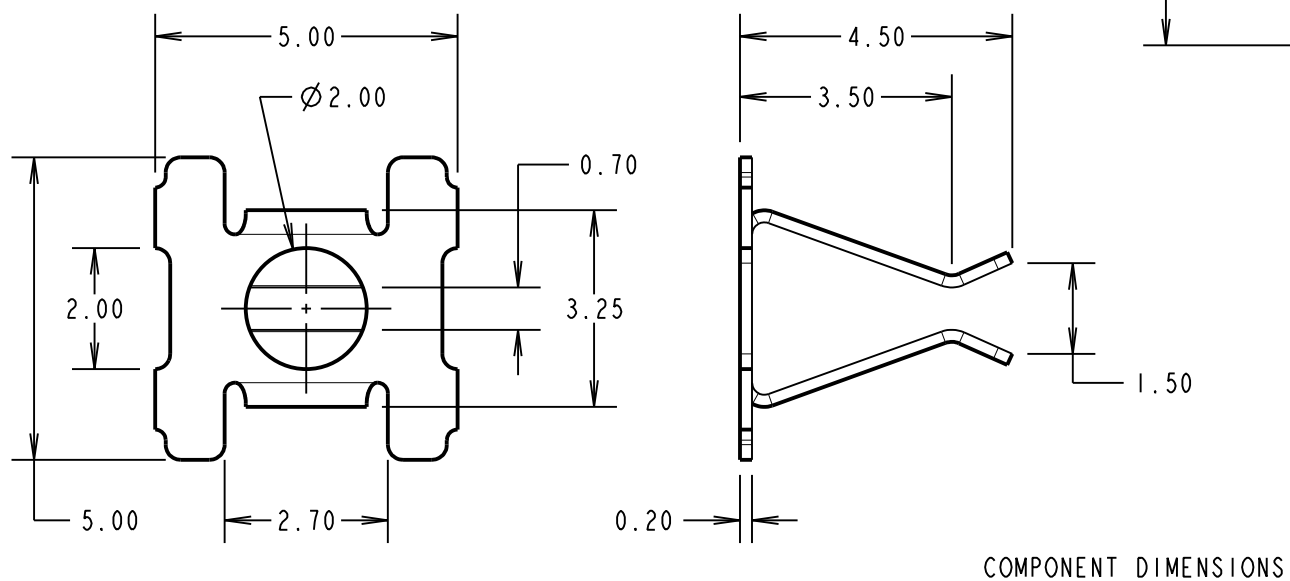
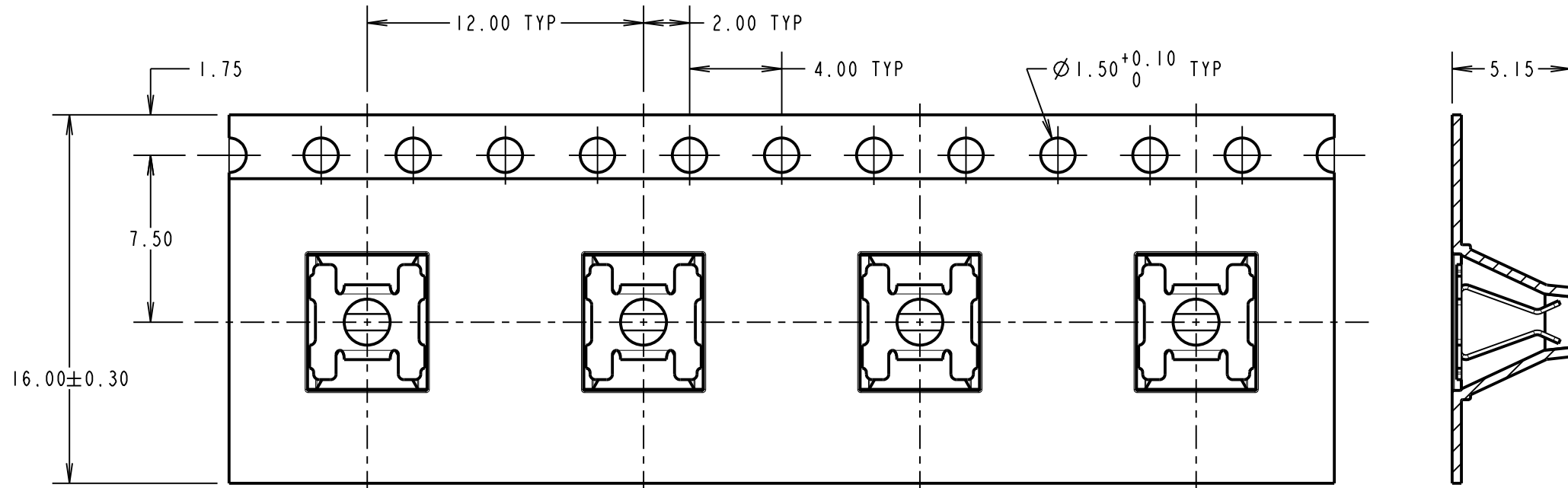
**MATERIAL:**  
PHOSPHOR BRONZE

**FINISH:**  
4.0 $\mu$ m MIN 100% TIN OVER 2.0 $\mu$ m MIN NICKEL

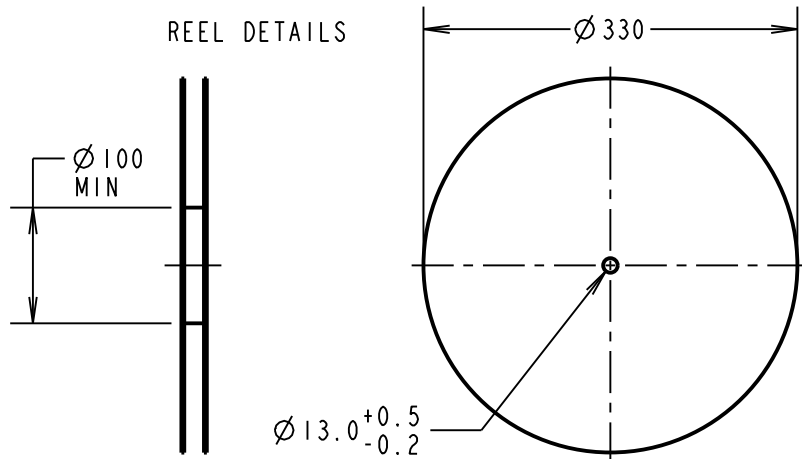
**ELECTRICAL:**  
CURRENT RATING = 9A MAX WITH A  $\varnothing 1.10$ mm PIN  
CONTACT RESISTANCE (BEFORE CYCLING) = 2.67m $\Omega$   
CONTACT RESISTANCE (50 CYCLES) = 2.67m $\Omega$   
DURABILITY = 100 OPERATIONS

**MECHANICAL:**  
MAX INSERTION FORCE WITH  $\varnothing 1.10$ mm PIN = 2.8N  
MAX INSERTION FORCE WITH  $\varnothing 1.80$ mm PIN = 6.0N  
MIN WITHDRAWAL FORCE WITH  $\varnothing 1.10$ mm PIN = 0.3N  
MIN WITHDRAWAL FORCE WITH  $\varnothing 1.80$ mm PIN = 0.5N

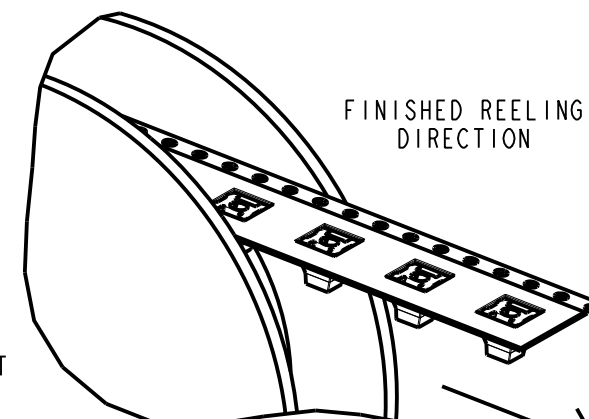
**ENVIRONMENTAL:**  
OPERATING TEMPERATURE = -40°C TO +105°C  
FOR COMPLETE SPECIFICATION, SEE HARWIN TEST REPORT SUMMARY HT007XX (LATEST ISSUE).



COMPONENT DIMENSIONS

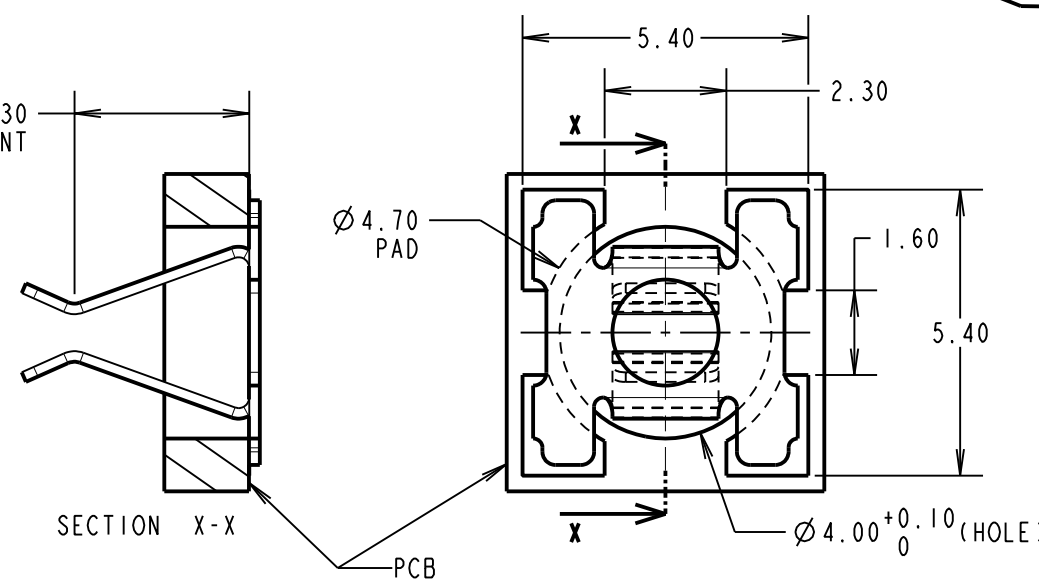


REEL DETAILS



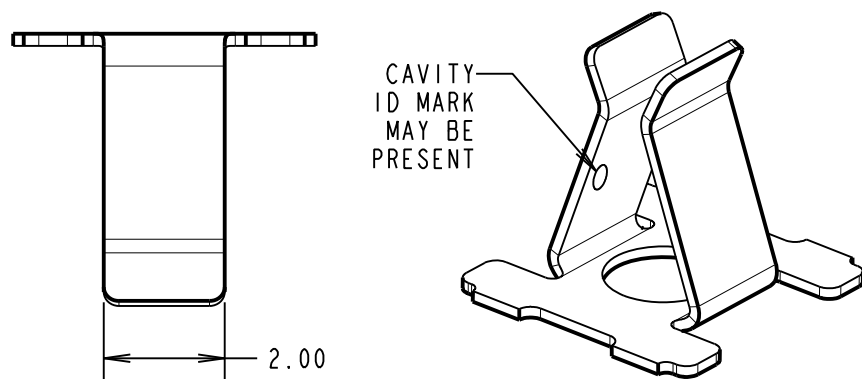
FINISHED REELING DIRECTION

RECOMMENDED PCB PAD LAYOUT (TOLERANCE =  $\pm 0.05$ )



SECTION X-X

PCB



CAVITY ID MARK MAY BE PRESENT

MGP	8	26.02.19	21744
NAME	ISS.	DATE	C/NOTE
APPROVED: MGP			
CHECKED: SB			
DRAWN: S.FLOWER			
CUSTOMER REF.:			
ASSEMBLY DRG:			

**HARWIN**

www.harwin.com  
technical@harwin.com

THIS DRAWING AND ANY INFORMATION OR DESCRIPTIVE MATTER SET OUT HEREON ARE CONFIDENTIAL AND COPYRIGHT PROPERTY OF THE HARWIN GROUP AND MUST NOT BE DISCLOSED, LOANED, COPIED OR USED FOR MANUFACTURING, TENDERING OR FOR ANY OTHER PURPOSE WITHOUT THEIR WRITTEN PERMISSION.

**TOLERANCES**  
X. =  $\pm 1$ mm  
X.X =  $\pm 0.50$ mm  
X.XX =  $\pm 0.20$ mm  
X.XXX =  $\pm 0.01$ mm  
ANGLES =  $\pm 5^\circ$   
UNLESS STATED

**MATERIAL:**  
SEE ABOVE

**FINISH:** SEE ABOVE

**S/AREA:** mm<sup>2</sup>

**TITLE:**  
SMT CONTACT CLIP  
IN TAPE & REEL

**DRAWING NUMBER:**  
S9101-46R

SHT  
2 OF 2

## X-ON Electronics

Largest Supplier of Electrical and Electronic Components

*Click to view similar products for [Circuit Board Hardware - PCB category](#):*

*Click to view products by [Harwin manufacturer](#):*

Other Similar products are found below :

[8919-0-00-15-00-00-03-0](#) [0135-0-15-01-30-27-04-0](#) [5970-1-15-01-32-14-04-0](#) [0149-0-15-15-30-27-04-0](#) [MBI 1 BLUE](#) [7305-0-15-15-47-14-10-0](#) [MLN 150/1 BLACK](#) [8579-0-15-80-11-27-10-0](#) [8579-1-15-15-11-27-10-0](#) [8830-0-15-01-22-14-10-0](#) [8836-0-00-21-00-00-03-0](#) [PRUEF 2 RED](#) [9976-0-00-00-00-00-03-0](#) [PW1616](#) [1215-3-05-00-00-00-01-0](#) [1231](#) [1303-0-15-15-47-14-04-0](#) [1404-3](#) [1404-4](#) [1406-4](#) [1407-3](#) [1406-3](#) [1407-4](#) [1408-3](#) [1424-4](#) [1427-3](#) [1419-4](#) [1426-4](#) [1548-103](#) [1938-0-00-00-00-00-03-0](#) [1942-0-00-00-00-00-03-0](#) [2101-3-00-44-00-00-07-0](#) [2108-2-00-50-00-00-07-0](#) [2109-2-00-44-00-00-07-0](#) [2110-2-00-44-00-00-07-0](#) [2111-2-00-00-00-00-07-0](#) [2113-4-00-44-00-00-07-0](#) [2301-3-00-44-00-00-07-0](#) [2308-1-00-50-00-00-07-0](#) [2313-2-00-00-00-00-07-0](#) [2315-2-01-44-00-00-07-0](#) [2333-1-00-50-00-00-07-0](#) [9000-0-00-00-00-00-03-0](#) [2506-2-00-50-00-00-07-0](#) [2507-2-01-44-00-00-07-0](#) [2508-2-00-44-00-00-07-0](#) [2561-2-00-44-00-00-07-0](#) [9220](#) [9234-0-15-15-30-14-10-0](#) [LAS S G BLACK](#)