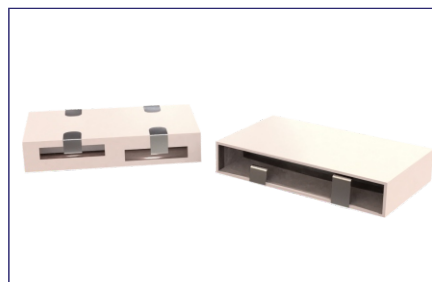


SMD 6.5x6.0 to 8.5x7.5 PACKAGE

PRODUCT FEATURES

- High selectivity, suitable for narrowband communication
- Compact structure and small size
- Electrical performance won't be affected by external electromagnetic interference
- Suitable for matching with different ICs
- Automatic on-line, can be reflowed
- RoHS compliant

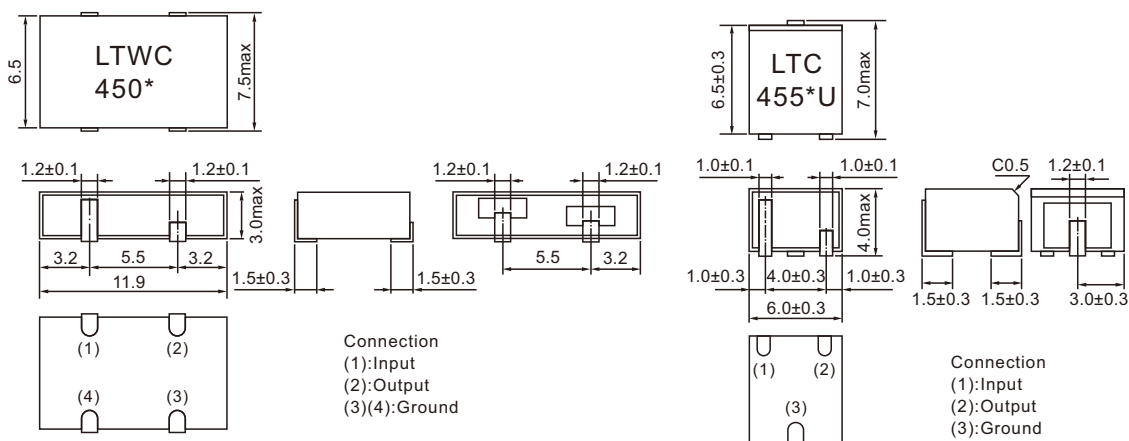
PRODUCT PHOTO



PRODUCT SPECIFICATIONS

Part Number		6dB Bandwidth (KHz)Min.	Attn.BW Bandwidth (KHz)Min.	Stop Band Attn (dB) Min.		Ripple (dB)Max.	Insertion Loss(dB)Max.	Input/Output Impedance (K.Ohm)	Operating Temperature (°C)
LTWC	LTC			LTWC	LTC				
LTWC450D	LTC450DU	±10	±20	45	28	3	6	1.5	-20~+80
LTWC450E	LTC450EU	±7.5	±15	45	28	3	6	1.5	
LTWC450F	LTC450FU	±6	±12.5	45	28	3	6	2	
LTWC450G	LTC450GU	±4.5	±10	45	28	3	6	2	
LTWC450H	LTC450HU	±3	±9	50	30	3	6	2	
LTWC455D	LTC455DU	±10	±20	45	28	3	6	1.5	
LTWC455E	LTC455EU	±7.5	±15	45	28	3	6	1.5	
LTWC455F	LTC455FU	±6	±12.5	45	28	3	6	2	
LTWC455G	LTC455GU	±4.5	±10	45	28	3	6	2	
LTWC455H	LTC455HU	±3	±9	50	30	3	6	2	

PACKAGE OUTLINE / DIMENSIONS



LTWC Series

LTC ****U Series

X-ON Electronics

Largest Supplier of Electrical and Electronic Components

Click to view similar products for [Signal Conditioning](#) category:

Click to view products by [HCI](#) manufacturer:

Other Similar products are found below :

[PD0409J5050S2HF](#) [HHS-109-PIN](#) [AFS14A35-1591.50-T3](#) [JP510S](#) [LFB322G45SN1A504](#) [SF2159E](#) [FM-104-PIN](#) [CER0813B](#)

[MAPDCC0005](#) [3A325](#) [BD0810N50100AHF](#) [DC0710J5005AHF](#) [DC2327J5005AHF](#) [LFL15869MTC1B787](#) [X3C19F1-20S](#)

[CDBLB455KCAX39-B0](#) [RF1353C](#) [051157-0000](#) [PD0922J5050D2HF](#) [600S150FTRB](#) [1E1305-3](#) [1F1304-3S](#) [TP-103-PIN](#)

[BD1222J50200AHF](#) [BD1722J50100AHF](#) [2450DP39K5400E](#) [BD0810J50150AHF](#) [BD1722J50200AHF](#) [DS-327-PIN](#) [MACP-008125-](#)

[CK07F0](#) [DS-329-PIN](#) [DS-313-PIN](#) [TP-104-PIN](#) [TP-101-PIN](#) [HH-128-PIN](#) [8594810000](#) [T-1000-N](#) [JP506S](#) [XC0900P-10S](#) [XC0900B-30S](#)

[CHE1260-QAG](#) [11305-10](#) [5962-9091202MXA](#) [3A412S](#) [X3C06A4-03S](#) [B39000Z3410A4](#) [DSS-333-PIN](#) [PD2425J5050S2HF](#)

[B39242B4360P810](#) [B39781B8005P810](#)