

QUARTZ CRYSTAL UNIT IN HC-49/S THRU-HOLE PACKAGE WITH 2 LEADS.
PRODUCT FEATURES

- Dimensions 11x4.6, height 3.5 or 2.5mm with 2 leads.
- Ideal for low frequencies.
- Optional insulation spacer and cut leads available.
- Optional packaging on Tape & Reel available.
- RoHS compliant, LEAD-FREE and HALOGEN-FREE.

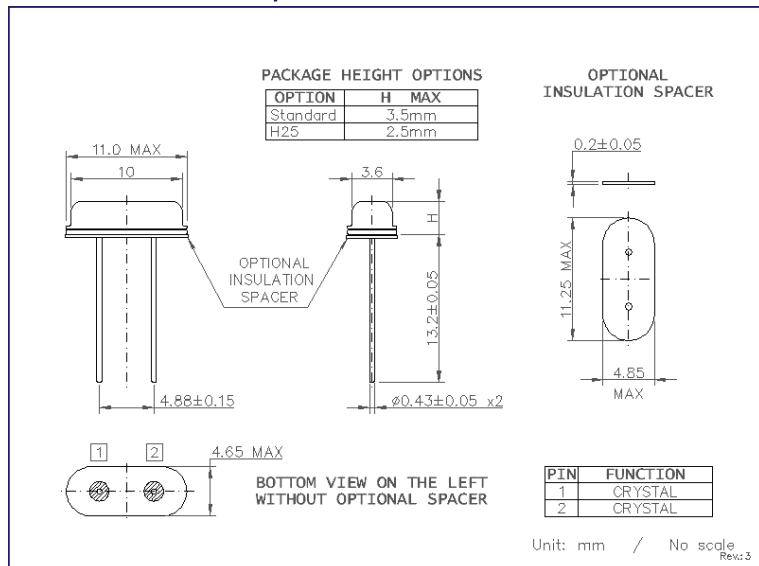
APPLICATIONS

- TV, Radio
- Computer
- Test Equipment
- Consumer equipment

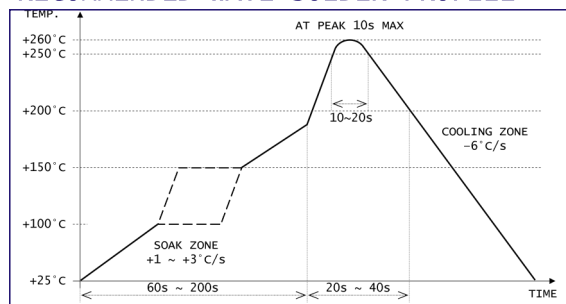
PRODUCT PHOTO (NOT IN SCALE)

PRODUCT SPECIFICATIONS

PARAMETER	X49ST2		CONDITIONS / REMARKS
Nominal frequency range	3.0 ~ 80.0MHZ		Fundamental up to 48MHZ and 3rd overtone above 24MHZ.
Crystal cut and mode	AT-cut / FUND & 3rd OT		
Frequency tolerance	±10ppm / ±20ppm / ±30ppm		Other options available.
Frequency stability	±10ppm	±30ppm	Other options available.
Operating temperature range	-20 to +70°C	-40 to +85°C	Other options available.
Equivalent series resistance	200Ω ~ 100Ω 80Ω ~ 60Ω 50Ω ~ 40Ω <30Ω 100Ω ~ 40Ω		FUND - 3.0 to 5.9MHZ FUND - 6.0 to 8.9MHZ FUND - 9.0 to 15.9MHZ FUND - >16.0MHZ 3rd OT - 24.0 to 80.0MHZ
Load capacitance	4 ~ 32pF or SERIES		Please specify.
Shunt capacitance	<7pF		--
Drive level	100μW TYP / 500μW MAX		--
Aging first year	±5ppm		@+25°C

PACKAGE OUTLINE / DIMENSIONS

PACKAGING INFORMATION

- Bulk packaging in vinyl bags and boxes.
- QTY per bag: 100pcs MAX.
- QTY per box: 1,000pcs MAX.
- Optional T&R: 1,000pcs / reel

RECOMMENDED WAVE SOLDER PROFILE


X-ON Electronics

Largest Supplier of Electrical and Electronic Components

Click to view similar products for [Crystals](#) category:

Click to view products by [HCI](#) manufacturer:

Other Similar products are found below :

[CX3225GB25000M0PPSZ1](#) [718-13.2-1](#) [MC405 32.0000K-R3:PURE SN](#) [7A-40.000MAAE-T](#) [FL2000085](#) [99-BU](#) [9B-15.360MBBK-B](#) [9C-7.680MBBK-T](#) [H10S-12.000-18-EXT-TR](#) [ABC2-6.000MHZ-D4Z-T](#) [ABLS-20.000MHZ-D2-T](#) [ABS071-32.768KHZ-6-T](#) [R38-32.768-12.5-5PPM-NPB](#) [BTD1062E05A-513](#) [21U15A-21.4MHZ](#) [RTX-781DF1-S-20.950](#) [LFXTAL066198Cutt](#) [9C-14.31818MBBK-T](#) [A-11.000MHZ-27](#) [ABL-27.000MHZ-B4Y-T](#) [ABM11-132-24.000MHZ-T3](#) [ABM3B1-25.000MHZ-D2Y-T](#) [SPT2A-.032768B](#) [SPT2A.032768G](#) [SSPT7F-9PF20-R](#) [FX325BS-38.88EEM1201](#) [LFXTAL065253Cutt](#) [LFXTAL066431Cutt](#) [XT9S20ANA14M7456](#) [XT9SNLANA16M](#) [7A-24.576MBBK-T](#) [7B-30.000MBBK-T](#) [MMCC2R32.7680KHZ](#) [7A-14.31818MBBK-T](#) [6504-202-1501](#) [6526-202-1501](#) [ABLS-12.000MHZ-B2Y-T](#) [7A-10.000MBBK-T](#) [SG636PCE-20.000MC](#) [3404](#) [E1SAA18-25.000M TR](#) [EA3250FA18-25.000M TR](#) [CM315D32768EZFT](#) [C1E-24.000-7-2020-R](#) [C1E-19.200-12-1530-X-R](#) [C1E-16.000-12-1530-X-R](#) [ABM11-16.000MHZ-9-B1U-T](#) [FL5000014](#) [EUCA18-3.1872M](#) [FX0800015](#)