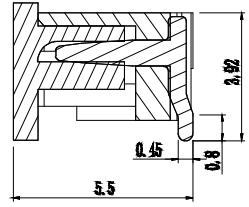
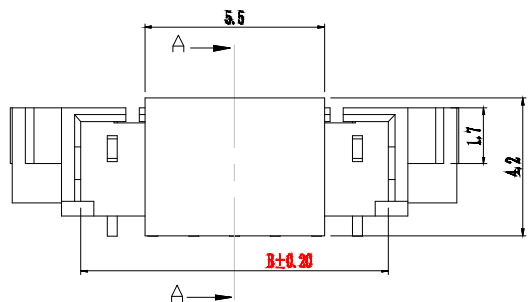
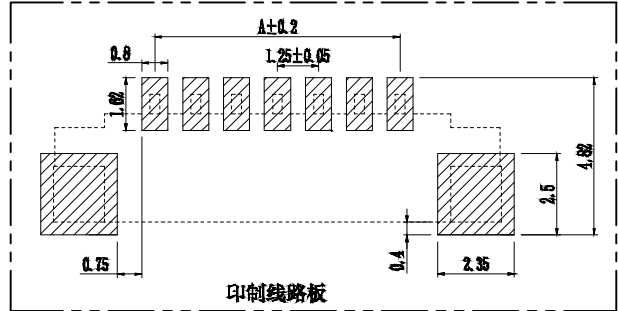
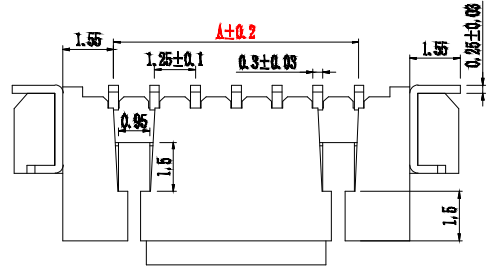


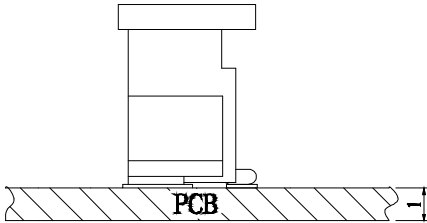
- SPECIFICATIONS**
- 1、Current Rating: 2A AC, DC
 - 2、Voltage Rating: 250V AC, DC
 - 3、Temperatuer Range: -25℃~+85℃
 - 4、Contact Resistance: 20mΩ Max
 - 5、Insulation Resistance: 1000MΩ Min
 - 6、Withstanding Voltang: 800V AC/minute
 - 7、Material:Wafer LCP ,UL94V-0
PIN Brass Tin-plated
Solder tad Phosphoric bronze Tin-plated



截面 A-A

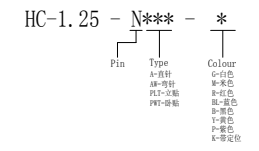


印制线路板



Circuit	Part NO.	Dimensions mm		
		A	B	C
2	HC-1.25-2PLT-X	1.25	3.10	7.30
3	HC-1.25-3PLT-X	2.50	4.35	8.60
4	HC-1.25-4PLT-X	3.75	5.60	9.80
5	HC-1.25-5PLT-X	5.00	6.85	11.10
6	HC-1.25-6PLT-X	6.25	8.10	12.30
7	HC-1.25-7PLT-X	7.50	9.35	13.60
8	HC-1.25-8PLT-X	8.75	10.60	14.90
9	HC-1.25-9PLT-X	10.00	11.85	16.10
10	HC-1.25-10PLT-X	11.25	13.10	17.30
11	HC-1.25-11PLT-X	12.50	14.35	18.60
12	HC-1.25-12PLT-X	13.75	15.60	19.85
13	HC-1.25-13PLT-X	15.00	16.85	21.10
14	HC-1.25-14PLT-X	16.25	18.10	22.35
15	HC-1.25-15PLT-X	17.50	19.35	23.60
16	HC-1.25-16PLT-X	18.75	20.60	24.85
17	HC-1.25-17PLT-X	20.00	21.85	26.10
18	HC-1.25-18PLT-X	21.25	23.10	27.35
19	HC-1.25-19PLT-X	22.50	24.35	28.60
20	HC-1.25-20PLT-X	23.75	25.60	29.85

Ordering Information



			GENERAL TOLERANCE	制图	深圳市华灿天禄电子有限公司 ShenzhenhuacantianluELECTRONICS CO.,LTD				
			DIM TOL	DRAWING					
			X.X ±0.30	审核	产品名称	1.25-立贴	版本	A	
			X.XX ±0.20	CHECK	APPROVAL	TITLE	REV.		
			X.XXX ±0.10		批准	产品料号	HC-1.25-NPLT-X	单位	mm
			Angle ±3.0°		SCALE	PART NO.	UNITS		
序号	变更内容	日期		投影	材料		页次	1/1	
No.	MODIFY CONTENT	MODIFY DATE		Projection	MATERIAL		SHEET		

X-ON Electronics

Largest Supplier of Electrical and Electronic Components

Click to view similar products for [Headers & Wire Housings](#) category:

Click to view products by [HCTL](#) manufacturer:

Other Similar products are found below :

[57102-F02-18ULF](#) [58102-G61-06LF](#) [582553-1](#) [009176003701906](#) [01.001.5753.1](#) [0050291907](#) [02.125.8002.8](#) [609-3404](#) [61062-3](#)
[CSU011177004](#) [622-0430](#) [622-3653LF](#) [63453-116](#) [636-1030](#) [636-1427](#) [636-3427](#) [636-4007](#) [641938-9](#) [65495-038](#) [65692-001LF](#) [65781-018](#)
[65781-047](#) [65817-010LF](#) [65817-015LF](#) [66207-023LF](#) [67095-007LF](#) [67601157](#) [68631-112](#) [68645-018](#) [699319-000](#) [M90C108951C](#)
[70.362.1628.0](#) [70-4210](#) [70-4226B](#) [70-4853B](#) [707-5028](#) [71.350.2428.0](#) [71961-016LF](#) [733-134](#) [733-162](#) [754199-000](#) [760-3052](#) [80.063.4001.1](#)
[800-90-001-10-001000](#) [800-90-010-10-002000](#) [801-43-002-10-013000](#) [801-43-006-10-002000](#) [803-41-018-10-001000](#) [803-43-024-10-](#)
[001000](#) [803-93-012-10-001000](#)