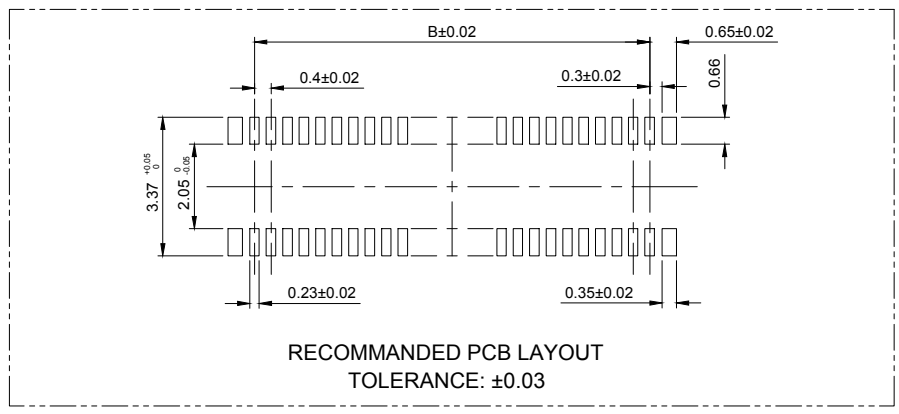


- NOTES-
1. MATERIAL SEE TABLE;
  2. ELECTRICAL PERFORMANCES:
    - 2-1. RATED CURRENT: 0.3A;
    - 2-2. CONTACT RESISTANCE: 90mΩ Max. with AC 20mV, 1kHz and 1mA;
    - 2-3. INSULATION RESISTANCE: 50mΩ min. With DC 100v;
    - 2-4. WITHSTANDING VOLTAGE: 100 VAC FOR 1 MINUTE MIN.
  3. MECHANICAL PERFORMANCES:
    - 3-1. DURABILITY: 30 CYCLES;
    - 3-2. OPERATION TEMPERATURE: -35°C To +85°C;
    - 3-3. NORMAL INSERT FORCE AT MATED POSITION: 5N MAX;



| Ass'y High(H) | Plastic High |             |
|---------------|--------------|-------------|
|               | Male (H1)    | Female (H2) |
| 1.50          | 1.14         | 1.40        |
| 2.00          | 1.14         | 1.90        |
| 2.50          | 1.14         | 2.40        |
| 3.00          | 1.14         | 2.90        |
| 3.50          | 1.14         | 3.40        |
| 4.00          | 1.14         | 3.90        |

**Ordering Information**

HC-PBB40C - NDP - 0.4V - 02

No. of Pins: 10=120Pin, 12=100Pin, 10=100Pin, 12=120Pin

Nature: DP=Male, PITCH: 0.4V=0.4mm

| Pin | 10   | 12   | 20   | 24   | 30   | 34   | 40   | 44    | 50    | 60    | 70    | 80    | 90    | 100   | 120   |
|-----|------|------|------|------|------|------|------|-------|-------|-------|-------|-------|-------|-------|-------|
| A   | 3.52 | 3.92 | 5.52 | 6.32 | 7.52 | 8.32 | 9.52 | 10.32 | 11.52 | 13.52 | 15.52 | 17.52 | 19.52 | 21.52 | 25.52 |
| B   | 1.60 | 2.00 | 3.60 | 4.40 | 5.60 | 6.40 | 7.60 | 8.40  | 9.60  | 11.60 | 13.60 | 15.60 | 17.60 | 19.60 | 23.60 |
| C   | -    | -    | 1.93 | 2.43 | 3.18 | 3.68 | 5.08 | 5.86  | 5.50  | 6.00  | 7.00  | 8.00  | 9.00  | 10.00 | 14.00 |
| D   | 1.00 | 1.00 | 1.00 | 1.20 | 1.50 | 2.30 | 3.20 | 3.20  | 3.20  | 3.20  | 3.20  | 3.20  | 3.20  | 3.20  | 3.20  |

| 2    | Housing   | 1    | LCP      | Glass:30%                                   | Black  |
|------|-----------|------|----------|---|--------|
| 1    | Terminal  | N    | C5191H   | Ni 50~90u"UNDERPLATING, GOLD FLASH OVER ALL |        |
| ITEM | Part Name | Q'TY | MATERIAL | MATERIAL                                    | REMARK |

|           |                        |                   | GENREL TOLERANCE | 制 图<br>DRAWING    | 深圳市华灿天禄电子有限公司<br>ShenzhenhuacantianluELECTRONICS CO.,LTD |                       |              |     |
|-----------|------------------------|-------------------|------------------|-------------------|--|-----------------------|--------------|-----|
|           |                        |                   | DIM TOL          | 审 核<br>CHECK      | 产品名称<br>TITLE  | 0.4 双槽 立贴 公座 (BTB)    | 版 本<br>REV.  | A   |
|           |                        |                   | X.X ±0.30        | 批 准<br>APPROVAL   | 产品料号<br>PART NO.   | HC-PBB40C-NDP-0.4V-02 | 单 位<br>UNITS | mm  |
| 1         | 初版发行                   |                   | X.XX ±0.20       | 比 例<br>SCALE      | 材料<br>MATERIAL   |                       | 页 次<br>SHEET | 1/1 |
| 序号<br>No. | 变更内容<br>MODIFY CONTENT | 日期<br>MODIFY DATE | X.XXX ±0.10      | 投 影<br>Projection |  |                       |              |     |
|           |                        |                   | Angle ±3.0°      |                   |  |                       |              |     |

## X-ON Electronics

Largest Supplier of Electrical and Electronic Components

*Click to view similar products for [Board to Board & Mezzanine Connectors](#) category:*

*Click to view products by [HCTL](#) manufacturer:*

Other Similar products are found below :

[589158040000018](#) [MDF7C-18P-2.54DSA\(55\)](#) [FCN-268F036-G/BD](#) [FCN-268M012-G/0D](#) [FCN-268M024-G/1D](#) [MIS-048-01-F-D-DP-K](#)  
[832-10-034-10-001000](#) [FX4C-80S-1.27DSA](#) [93696-330](#) [224393](#) [FCN-235D050-G/C](#) [210-93-314-41-105000](#) [MDF7-40DP-2.54DSA\(55\)](#)  
[MIT-114-03-F-D-K](#) [55323-1519](#) [026-6203-PDB](#) [027-6203-PDB](#) [069159702701000](#) [101A10019X](#) [105061100000861+](#) [55650-0588-C](#) [75140-](#)  
[7012](#) [87471-650](#) [YTW-30-07-H-Q-410-140](#) [YTT-112-01-H-Q](#) [063209](#) [10124054-515LF](#) [68685-603](#) [8-1616154-3](#) [MIS-019-01-F-D](#) [YTQ-](#)  
[12103HQ](#) [541371078](#) [IL-WX-10PB-HF-B-E1000E](#) [FCN-214J100-G/0](#) [FCN-230C068-E/S](#) [354184](#) [MIT-019-04-F-D-K](#) [P50-028-DDS-TG](#)  
[53309-2471](#) [54546-2071](#) [1586617-1](#) [504208-3010](#) [504208-5010](#) [504248-1010](#) [504248-1210](#) [504248-2010](#) [LST-115-07-S-D](#) [LST-105-07-G-](#)  
[D](#) [9159005551906](#) [NDS100-004-BF](#)