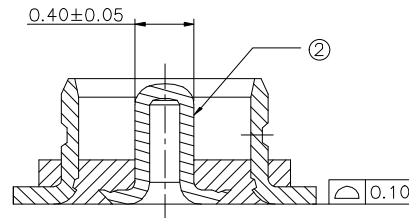
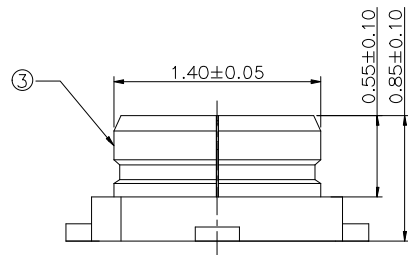


Recommended PCB Layout  
(General Tolerance Is ±0.05)

1. Material: see table A
2. Plating: see table A
3. Electrical characteristics
  - 3.1 Rated voltage: 60V, 50Hz, rms.
  - 3.2 Insulation resistance  $\geq 5,000 \Omega$ ;
  - 3.3 Dielectric withstanding voltage: 200V AC 1 Min;
  - 3.4 Contact resistance:
    - 3.4.1 Inner conductor  $\leq 20m \Omega$ ;
    - 3.4.2 Outer conductor  $\leq 20m \Omega$ ;
  - 3.5 Characteristic impedance:  $50 \Omega$ .
  - 3.6 VSWR:
    - $\leq 1.3$  (DC~3GHz)
    - $\leq 1.4$  (3~6GHz).
  - 3.7 Frequency range: DC~6GHz.
4. Environment
  - 4.1 Operating temperature range:  $-40^{\circ}C \sim +90^{\circ}C$ .
  - 4.2 Relative humidity:  $\leq 95\%$  ( $40^{\circ}C \pm 2^{\circ}C$ )
  - 4.3 Product should meet HSF requirement;



Section: A-A

1	HOUSING	1	THERMOPLASTIC, COLOR: BLACK, UL 94V-0	—
2	CONTACT	1	COPPER ALLOY, PLATING Au	—
3	SHELL	1	COPPER ALLOY, PLATING Au	—
Item	component	Qt'y	Material/Treatment	Note

Free tolerance	Unit	mm			深圳市华灿天禄电子有限公司 Product Name: RF III Receptacle Assembly (H=0.85mm) P/N: 3.2.08.0112 Drawing No.: HC-RF-IPEX2020-03						
Length size	Material		SEE NOTES								
X. ±0.50	Finish		SEE NOTES		Product Name	RF III Receptacle Assembly (H=0.85mm)					
.X ±0.30	Approved by	Jack Hu	Jun. 02, 16	Checked by						YC.YANG	Jun. 02, 16
.XX ±0.20	Designed by	PAN BAI	Jun. 02, 16		Drawing No.	HC-RF-IPEX2020-03					
.XXX ±0.10	Drawn by	ZH.XU	Jun. 02, 16	Scale	1 : 1	Drawing spec.	A4	Page	1 of 1	Version	A1
角度	X. ±3.0°	.X ±2.0°	.XX ±1.0°								

A1	—	New release	ZH.XU	YC.YANG	Jack Hu
Version	ECN No.	Edit description	Drawing/Date	Checked by	Approved by

## X-ON Electronics

Largest Supplier of Electrical and Electronic Components

*Click to view similar products for [RF Connectors / Coaxial Connectors](#) category:*

*Click to view products by [HCTL](#) manufacturer:*

Other Similar products are found below :

[8915-1511-000](#) [89674-0827](#) [6001-7071-019](#) [6002-7051-003](#) [6059674-1](#) [619550-1](#) [630059-000](#) [M39012/25-3026](#) [M39030/3-01N](#) [6501-1071-002](#) [6769](#) [7002-1541-010](#) [7002-1572-002](#) [7003-1542-011](#) [7004-1512-000](#) [7009-1511-004](#) [7029-1511-060](#) [7101-1541-010](#) [7101-1571-002](#) [7105-1521-002](#) [7203-1571-003](#) [7209-1511-011](#) [7210-1511-015](#) [7210-1511-040](#) [7242-1511-000](#) [73216-2241](#) [73404-2300](#) [7405-1521-005](#) [7405-1521-802](#) [7406-1521-005](#) [8527](#) [8547](#) [FS11V](#) [877931](#) [8808-1511-001](#) [9049-9513-000](#) [9074-9513-000](#) [910A205F](#) [PL40-36](#) [PL40-5](#) [PL71-9](#) [980-8666-005](#) [1200690078](#) [1-201144-1](#) [120919](#) [R107003010W](#) [R110A172100](#) [R112186000](#) [R113053000W](#) [R113081000](#)