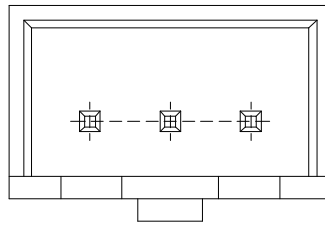
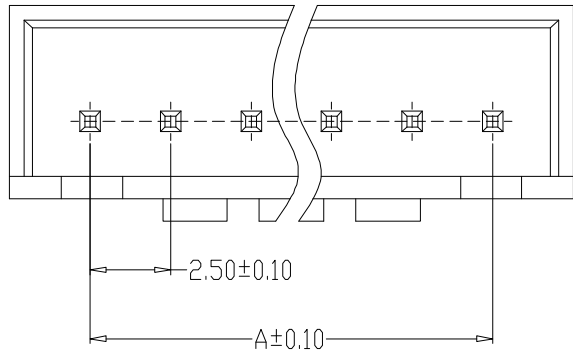
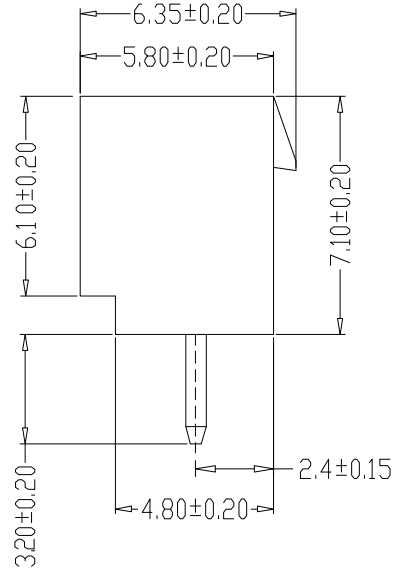
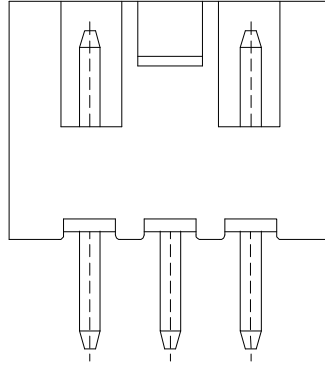
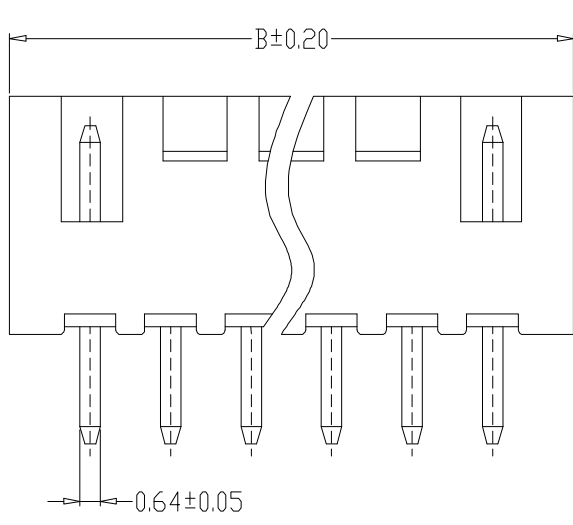
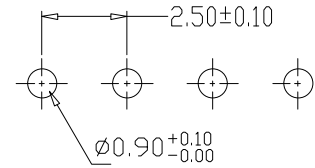


**SPECIFICATIONS**

- 1、Current Rating: 3A AC, DC
- 2、Voltage Rating: 250V AC, DC
- 3、Temperatuer Range: -25°C~+85°C
- 4、Contact Resistance: 10mΩ Max
- 5、Insulation Resistance: 1000MΩ Min
- 6、Withstanding Voltang: 1000V AC/minute
- 7、Material: Wafer Nylon66, UL94V-0  
PIN Brass Tin-plated



2-6A



PCB LAYOUT

| 编号         | 尺寸 (mm) |       |
|------------|---------|-------|
|            | A       | B     |
| HC-XHB-2A  | 2.50    | 7.50  |
| HC-XHB-3A  | 5.00    | 10.00 |
| HC-XHB-4A  | 7.50    | 12.50 |
| HC-XHB-5A  | 10.00   | 15.00 |
| HC-XHB-6A  | 12.50   | 17.50 |
| HC-XHB-7A  | 15.00   | 20.00 |
| HC-XHB-8A  | 17.50   | 22.50 |
| HC-XHB-9A  | 20.00   | 25.00 |
| HC-XHB-10A | 22.50   | 27.50 |
| HC-XHB-11A | 25.00   | 30.00 |
| HC-XHB-12A | 27.50   | 32.50 |
| HC-XHB-13A | 30.00   | 35.00 |
| HC-XHB-14A | 32.50   | 37.50 |
| HC-XHB-15A | 35.00   | 40.00 |
| HC-XHB-16A | 37.50   | 42.50 |

联系方式 18058866958

|                  |             |    |       |           |        |  |               |     |
|------------------|-------------|----|-------|-----------|--------|--|---------------|-----|
| GENREL TOLERANCE |             | 制图 | 林月旺   | 料号        | XHB-NA |  | 版本            | A   |
| X.±0.25          | X.*±2'      | 审核 | 李攀进   | PART NO.  | 带扣直针座  |  | 页次            | 1/1 |
| .X±0.20          | .X.*±1'     | 核准 | 罗观彬   | TITLE     |        |  | SHEET         |     |
| .XX±0.15         | .XX.*±0.5'  | 单位 | MM    | 客户料号      |        |  |               |     |
| .XXX±0.10        | .XXX.*±0.5' | 比例 | SCALE | CUTM. NO. |        |  | 深圳市华灿天禄电子有限公司 |     |
|                  |             |    | 1:1   |           |        |  |               |     |

## X-ON Electronics

Largest Supplier of Electrical and Electronic Components

*Click to view similar products for [Headers & Wire Housings](#) category:*

*Click to view products by [HCTL](#) manufacturer:*

Other Similar products are found below :

[57102-F02-18ULF](#) [58102-G61-06LF](#) [0009485154](#) [009176003701906](#) [0050291907](#) [02.125.8002.8](#) [609-3404](#) [61062-3](#) [622-0430](#) [622-3653LF](#)  
[63453-116](#) [636-1030](#) [636-1427](#) [636-3427](#) [636-4007](#) [641938-9](#) [644827-2](#) [65495-038](#) [65692-001LF](#) [65781-018](#) [65781-047](#) [65817-010LF](#)  
[65817-015LF](#) [66207-023LF](#) [67016-026LF](#) [67095-007LF](#) [68631-112](#) [68645-018](#) [68648-049](#) [699319-000](#) [70.362.1628.0](#) [70-4210](#) [70-4226B](#)  
[70-4853B](#) [707-5020](#) [707-5028](#) [71.350.2428.0](#) [71961-016LF](#) [733-134](#) [754199-000](#) [760-3052](#) [787-8014-00](#) [FCN-367T-T012/H](#) [80.063.4001.1](#)  
[800-90-001-10-001000](#) [800-90-010-10-002000](#) [801-43-002-10-013000](#) [801-43-006-10-002000](#) [803-41-018-10-001000](#) [803-43-014-20-](#)  
[001000](#)