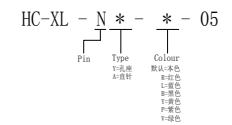


SPECIFICATIONS

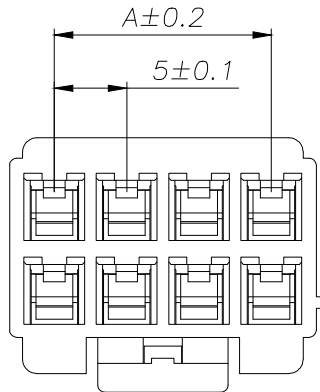
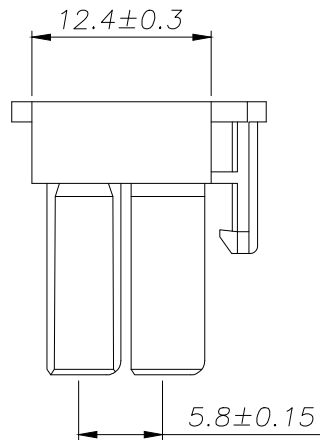
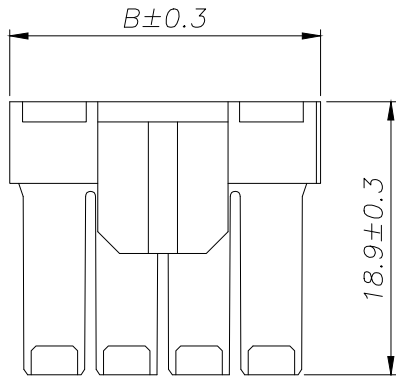
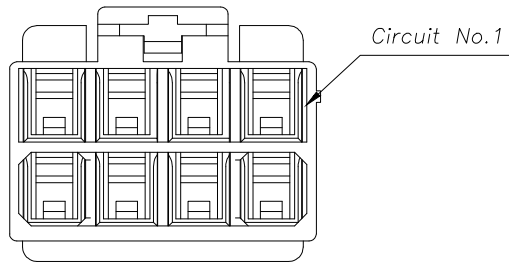
- 1、Current Rating: 10A AC, DC
- 2、Voltage Rating: 150V AC, DC
- 3、Temperatuer Range: -25°C~ +85°C
- 4、Contact Resistance: 20mΩ Max
- 5、Insulation Resistance: 1000mΩ Min
- 6、Withstanding Voltang: 1500V AC/minute
- 7、Material: Wafer Nylon66 UL94-V0(2)
PIN Brass Tin-plated

| Circuit | Part NO. | Dimensions mm | |
|---------|------------------|---------------|-------|
| | | A | B |
| 1 | HC-XL-2x1A-X-05 | --- | 8.15 |
| 2 | HC-XL-2x2A-X-05 | 5.00 | 13.15 |
| 3 | HC-XL-2x3A-X-05 | 10.00 | 18.15 |
| 4 | HC-XL-2x4A-X-05 | 15.00 | 23.15 |
| 5 | HC-XL-2x5A-X-05 | 20.00 | 28.15 |
| 6 | HC-XL-2x6A-X-05 | 25.00 | 33.15 |
| 7 | HC-XL-2x7A-X-05 | 30.00 | 38.15 |
| 8 | HC-XL-2x8A-X-05 | 35.00 | 43.15 |
| 9 | HC-XL-2x9A-X-05 | 40.00 | 48.15 |
| 10 | HC-XL-2x10A-X-05 | 45.00 | 53.15 |

Ordering Information



| | | | | | | | | | | |
|-----------|------------------------|-------------------|------------------|-------|------------------|--|--|-----------------|-------------|-----|
| | | | GENREL TOLERANCE | | 制图 DRAWING | | 深圳市华灿天禄电子有限公司 ShenzhenhuacantianluELECTRONICS CO.,LTD | | | |
| | | | DIM | TOL | 审核 CHECK | | | | | |
| | | | X.X | ±0.30 | 批准 APPROVAL | | 产品名称 TITLE | XL (5.00) 双排 直针 | 版本 REV. | A |
| | | | X.XX | ±0.20 | 比例 SCALE | | 产品料号 PART NO. | HC-XL-2xNA-X-05 | 单位 UNITS | mm |
| | | | X.XXX | ±0.10 | 投影 Projection | | 材料 MATERIAL | | 页次 SHEET | 1/1 |
| 序号 No. | 变更内容 MODIFY CONTENT | 日期 MODIFY DATE | Angle | ±3.0° | | | | | | |



SPECIFICATIONS

- 1、Current Rating: 10A AC, DC
- 2、Voltage Rating: 150V AC, DC
- 3、Temperatuer Range: -25°C~ +85°C
- 4、Contact Resistance: 20mΩ Max
- 5、Insulation Resistance: 1000mΩ Min
- 6、Withstanding Voltang: 1500V AC/minute
- 7、Material: Housing Nylon66 UL94-V0(2)

| Circuit | Part NO. | Dimensions mm | |
|---------|------------------|---------------|-------|
| | | A | B |
| 1 | HC-XL-2x1Y-X-05 | --- | 11.20 |
| 2 | HC-XL-2x2Y-X-05 | 5.00 | 11.20 |
| 3 | HC-XL-2x3Y-X-05 | 10.00 | 16.20 |
| 4 | HC-XL-2x4Y-X-05 | 15.00 | 21.20 |
| 5 | HC-XL-2x5Y-X-05 | 20.00 | 26.20 |
| 6 | HC-XL-2x6Y-X-05 | 25.00 | 31.20 |
| 7 | HC-XL-2x7Y-X-05 | 30.00 | 36.20 |
| 8 | HC-XL-2x8Y-X-05 | 35.00 | 41.20 |
| 9 | HC-XL-2x9Y-X-05 | 40.00 | 46.20 |
| 10 | HC-XL-2x10Y-X-05 | 45.00 | 51.20 |

Ordering Information

HC-XL - N * - * - 05

Pin

↑

Pin

Type

↑

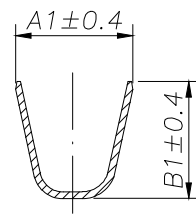
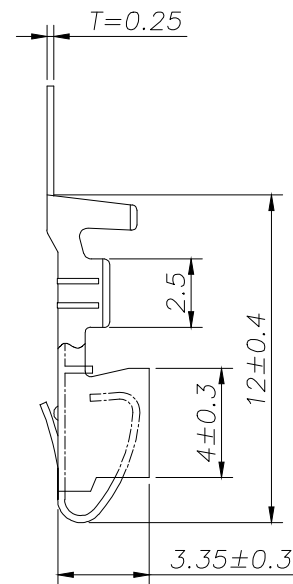
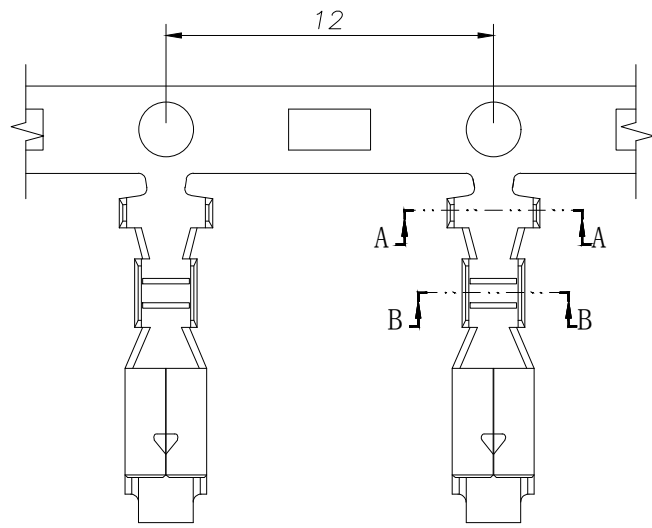
Y-插脚
直插脚

Colour

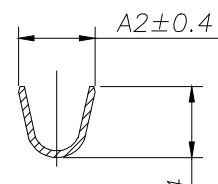
↑

默认:本色
红色
蓝色
白色
黄色
绿色

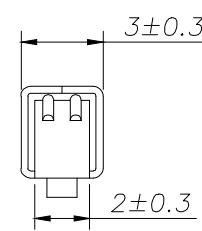
| | | | | | | | | | | |
|-----------|------------------------|-------------------|-------------------|-------|------------------|--|---|-----------------|-------------|-----|
| | | | GENERAL TOLERANCE | | 制图 DRAWING | | 深圳市华灿天禄电子有限公司 ShenzhenhuacantianluELECTRONICS CO.,LTD | | | |
| | | | DIM | TOL | 审核 CHECK | | | | | |
| | | | X.X | ±0.30 | 批准 APPROVAL | | 产品名称 TITLE | XL (5.00) 双排 孔座 | 版本 REV. | A |
| 1 | | | 初版发行 | | | | 产品料号 PART NO. | HC-XL-2xNY-X-05 | 单位 UNITS | mm |
| 序号 No. | 变更内容 MODIFY CONTENT | 日期 MODIFY DATE | Angle | ±3.0° | 投影 Projection | | 材料 MATERIAL | | 页次 SHEET | 1/1 |



SECTION A-A



SECTION B-B




C 向

SPECIFICATIONS

- 1、 Current Rating: 10A AC, DC
- 2、 Voltage Rating: 150V AC, DC
- 3、 Temperatuer Range: -25℃~ +85℃
- 4、 Contact Resistance: 20mΩ Max
- 5、 Insulation Resistance: 1000mΩ Min
- 6、 Withstanding Voltang: 1500V AC/minute
- 7、 Material: Phosphoric brass Tin-plated
- 8、 Applicable Wire Sizes:AWG #16~26#

| TYPE | Dimension mm | | | | 适用线规 AWG# |
|--------------|--------------|-----|-----|-----|--------------|
| | A1 | B1 | A2 | B2 | |
| HC-XL-T-05 | 4.5 | 4.0 | 3.1 | 2.6 | 20-16 |
| HC-XL-T-D-05 | 3.3 | 3.3 | 2.2 | 1.9 | 26-20 |

| | | | | | | | | | |
|-----------|------------------------|-------------------|------------------|-------|------------------|---|--------------|-------------|-----|
| | | | GENREL TOLERANCE | | 制图 DRAWING |  深圳市华灿天禄电子有限公司 ShenzhenhuacantianluELECTRONICS CO.,LTD | | | |
| | | | DIM | TOL | 审核 CHECK | | | | |
| | | | X.X | ±0.30 | 批准 APPROVAL | 产品名称 TITLE | XL (5.00) 端子 | 版本 REV. | A |
| 1 | | | 初版发行 | | | 产品料号 PART NO. | HC-XL-T-05 | 单位 UNITS | mm |
| 序号 No. | 变更内容 MODIFY CONTENT | 日期 MODIFY DATE | Angle | ±3.0° | 投影 Projection | 材料 MATERIAL | | 页次 SHEET | 1/1 |

X-ON Electronics

Largest Supplier of Electrical and Electronic Components

Click to view similar products for [Headers & Wire Housings](#) category:

Click to view products by [HCTL](#) manufacturer:

Other Similar products are found below :

[57102-F02-18ULF](#) [58102-G61-06LF](#) [582553-1](#) [009176003701906](#) [01.001.5753.1](#) [0050291907](#) [02.125.8002.8](#) [609-3404](#) [61062-3](#)
[CSU011177004](#) [622-0430](#) [622-3653LF](#) [63453-116](#) [636-1030](#) [636-1427](#) [636-3427](#) [636-4007](#) [641938-9](#) [644827-2](#) [65495-038](#) [65692-001LF](#)
[65781-018](#) [65781-047](#) [65817-010LF](#) [65817-015LF](#) [66207-023LF](#) [67095-007LF](#) [67601157](#) [68631-112](#) [68645-018](#) [699319-000](#)
[M90C108951C](#) [70.362.1628.0](#) [70-4210](#) [70-4226B](#) [70-4853B](#) [707-5028](#) [71.350.2428.0](#) [71961-016LF](#) [733-134](#) [733-162](#) [754199-000](#) [760-](#)
[3052](#) [80.063.4001.1](#) [800-90-001-10-001000](#) [800-90-010-10-002000](#) [801-43-002-10-013000](#) [801-43-006-10-002000](#) [803-41-018-10-001000](#)
[803-43-024-10-001000](#)