

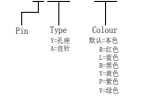
SPECIFICATIONS

- 1、Current Rating: 10A AC, DC
- 2、Voltage Rating: 150V AC, DC
- 3、Temperatuer Range: -25℃~ +85℃
- 4、Contact Resistance: 20mΩ Max
- 5、Insulation Resistance: 1000mΩ Min
- 6、Withstanding Voltang: 1500V AC/minute
- 7、Material: Wafer Nylon66 UL94-V0(2)
PIN Brass Tin-plated

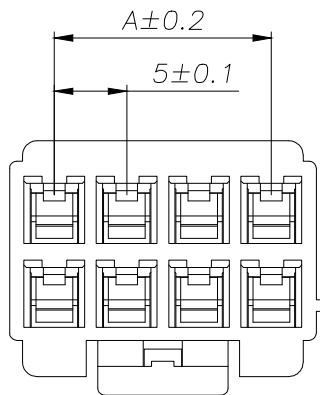
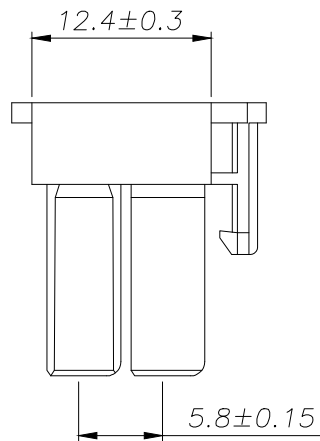
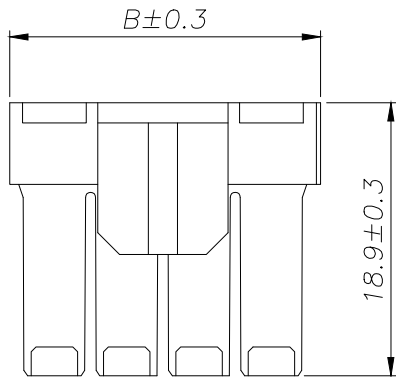
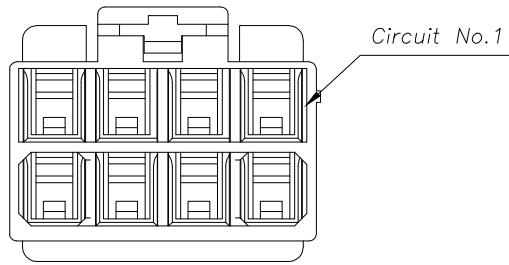
Circuit	Part NO.	Dimensions mm	
		A	B
1	HC-XL-2x1A-X-05	---	8.15
2	HC-XL-2x2A-X-05	5.00	13.15
3	HC-XL-2x3A-X-05	10.00	18.15
4	HC-XL-2x4A-X-05	15.00	23.15
5	HC-XL-2x5A-X-05	20.00	28.15
6	HC-XL-2x6A-X-05	25.00	33.15
7	HC-XL-2x7A-X-05	30.00	38.15
8	HC-XL-2x8A-X-05	35.00	43.15
9	HC-XL-2x9A-X-05	40.00	48.15
10	HC-XL-2x10A-X-05	45.00	53.15

Ordering Information

HC-XL - N * - * - 05



			GENREL TOLERANCE		制图 DRAWING		深圳市华灿天禄电子有限公司 ShenzhenhuacantianluELECTRONICS CO.,LTD			
			DIM	TOL	审核 CHECK					
			X.X	±0.30	批准 APPROVAL		产品名称 TITLE	XL (5.00) 双排 直针	版本 REV.	A
1			初版发行		比例 SCALE		产品料号 PART NO.	HC-XL-2xNA-X-05	单位 UNITS	mm
序号 No.	变更内容 MODIFY CONTENT	日期 MODIFY DATE	Angle	±3.0°	投影 Projection		材料 MATERIAL		页次 SHEET	1/1

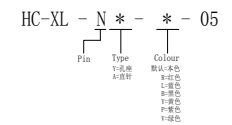


SPECIFICATIONS

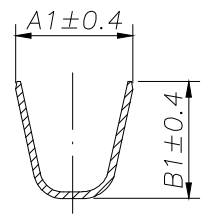
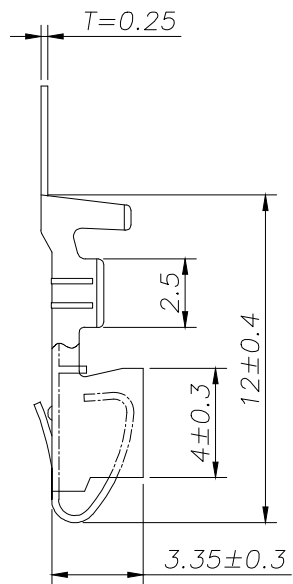
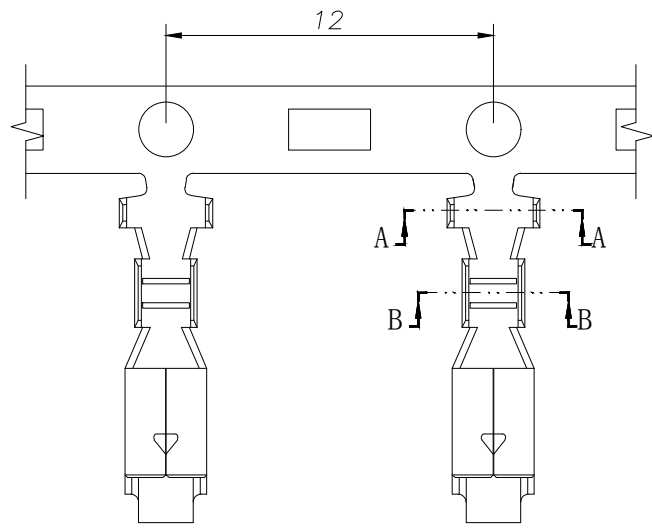
- 1、Current Rating: 10A AC, DC
- 2、Voltage Rating: 150V AC, DC
- 3、Temperatuer Range: -25°C~ +85°C
- 4、Contact Resistance: 20mΩ Max
- 5、Insulation Resistance: 1000mΩ Min
- 6、Withstanding Voltang: 1500V AC/minute
- 7、Material: Housing Nylon66 UL94-V0(2)

Circuit	Part NO.	Dimensions mm	
		A	B
1	HC-XL-2x1Y-X-05	---	11.20
2	HC-XL-2x2Y-X-05	5.00	11.20
3	HC-XL-2x3Y-X-05	10.00	16.20
4	HC-XL-2x4Y-X-05	15.00	21.20
5	HC-XL-2x5Y-X-05	20.00	26.20
6	HC-XL-2x6Y-X-05	25.00	31.20
7	HC-XL-2x7Y-X-05	30.00	36.20
8	HC-XL-2x8Y-X-05	35.00	41.20
9	HC-XL-2x9Y-X-05	40.00	46.20
10	HC-XL-2x10Y-X-05	45.00	51.20

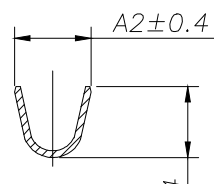
Ordering Information



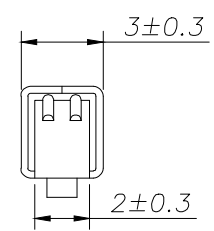
			GENEAL TOLERANCE		制图 DRAWING		深圳市华灿天禄电子有限公司 ShenzhenhuacantianluELECTRONICS CO.,LTD		
			DIM	TOL	审核 CHECK				
			X.X	±0.30	批准 APPROVAL		产品名称 TITLE		XL (5.00) 双排 孔座
1			X.XX	±0.20			产品料号 PART NO.		HC-XL-2xNY-X-05
序号 No.			X.XXX	±0.10	比例 SCALE		单位 UNITS		mm
变更内容 MODIFY CONTENT			Angle	±3.0°	投影 Projection		材料 MATERIAL		页次 SHEET
日期 MODIFY DATE							材料		1/1



SECTION A-A



SECTION B-B


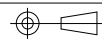


C 向

SPECIFICATIONS

- 1、 Current Rating: 10A AC, DC
- 2、 Voltage Rating: 150V AC, DC
- 3、 Temperatuer Range: -25℃~ +85℃
- 4、 Contact Resistance: 20mΩ Max
- 5、 Insulation Resistance: 1000mΩ Min
- 6、 Withstanding Voltang: 1500V AC/minute
- 7、 Material: Phosphoric brass Tin-plated
- 8、 Applicable Wire Sizes:AWG #16~26#

TYPE	Dimension mm				适用线规 AWG#
	A1	B1	A2	B2	
HC-XL-T-05	4.5	4.0	3.1	2.6	20-16
HC-XL-T-D-05	3.3	3.3	2.2	1.9	26-20

			GENREL TOLERANCE		制图 DRAWING		 深圳市华灿天禄电子有限公司 ShenzhenhuacantianluELECTRONICS CO.,LTD			
			DIM	TOL	审核 CHECK					
			X.X	±0.30	批准 APPROVAL		产品名称 TITLE	XL (5.00) 端子	版本 REV.	A
1			初版发行		比例 SCALE		产品料号 PART NO.	HC-XL-T-05	单位 UNITS	mm
序号 No.	变更内容 MODIFY CONTENT	日期 MODIFY DATE	Angle	±3.0°	投影 Projection		材料 MATERIAL		页次 SHEET	1/1

X-ON Electronics

Largest Supplier of Electrical and Electronic Components

Click to view similar products for [Headers & Wire Housings](#) category:

Click to view products by [HCTL](#) manufacturer:

Other Similar products are found below :

[57102-F02-18ULF](#) [58102-G61-06LF](#) [582553-1](#) [009176003701906](#) [01.001.5753.1](#) [0050291907](#) [02.125.8002.8](#) [609-3404](#) [61062-3](#)
[CSU011177004](#) [622-0430](#) [622-3653LF](#) [63453-116](#) [636-1030](#) [636-1427](#) [636-3427](#) [636-4007](#) [641938-9](#) [644827-2](#) [65495-038](#) [65692-001LF](#)
[65781-018](#) [65781-047](#) [65817-010LF](#) [65817-015LF](#) [66207-023LF](#) [67095-007LF](#) [67601157](#) [68631-112](#) [68645-018](#) [699319-000](#)
[M90C108951C](#) [70.362.1628.0](#) [70-4210](#) [70-4226B](#) [70-4853B](#) [707-5028](#) [71.350.2428.0](#) [71961-016LF](#) [733-134](#) [733-162](#) [754199-000](#) [760-](#)
[3052](#) [80.063.4001.1](#) [800-90-001-10-001000](#) [800-90-010-10-002000](#) [801-43-002-10-013000](#) [801-43-006-10-002000](#) [803-41-018-10-001000](#)
[803-43-024-10-001000](#)