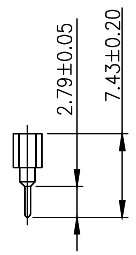
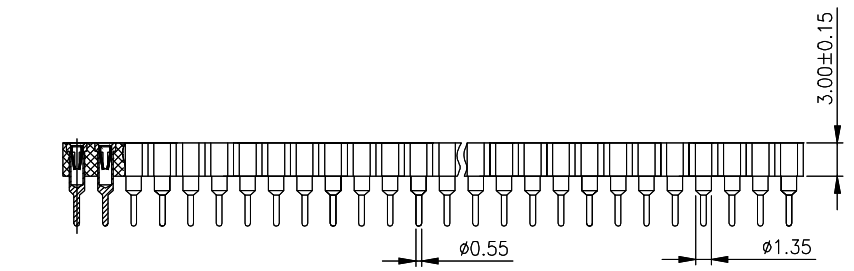
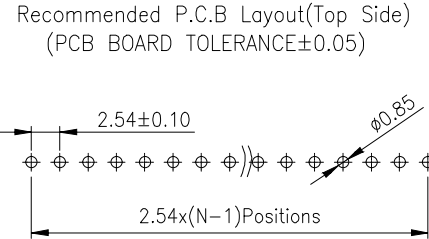
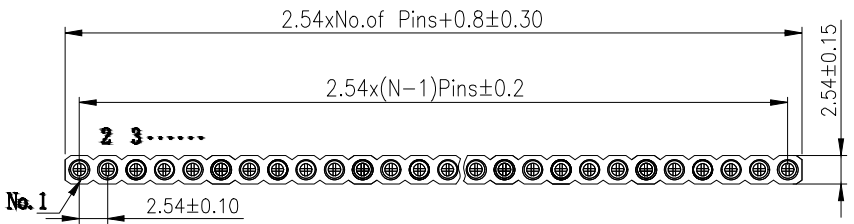


Technical Specs:

Insulator: Black glass filled polyester PPS-GF30-FR
 Flammability: UL 94V-O
 Sleeve: Brass
 Contact clip(4/6 finger): Beryllium copper(C17200)/Phosphor Bronze
 Accepted pin: Ø0.40 to 0.56mm
 Forces: (polished steel gauge Ø0.43mm)
 --Insertion 2 N typ
 --Withdrawal 1 N typ
 Mechanical life: min500 cycles
 Rated current: 3A
 Contact resistance: max 10mΩ
 Dielectric resistance: Min 1000V RMS
 Max.Processing Temp:230°C for30-60 seconds
 (260°C for 10 seconds)



Ordering Information

PM 254 - * - N - Z - * - ** - C

No. of Rows 1=Single Row 2=Dual Row	No. of Pins 2-40Pin	Type Z=直针 R=弯针 S=交插 RZ=双插	Length (mm)	Contact Plating G0:Gold Flash G1:1u" Gold G2:3u" Gold G3:5u" Gold G4:10u" Gold G5:15u" Gold G6:30u" Gold S0:Gold Flash/Tin S1:Tin	Round Pin (圆针)
---	------------------------	---------------------------------------	----------------	--	-------------------

			GENERAL TOLERANCE		制 图 DRAWING		深圳市华灿天禄电子有限公司 ShenzhenhuacantianluELECTRONICS CO.,LTD				
			DIM	TOL	审 核 CHECK		产品名称 TITLE		2.54 单排 排母 圆直针	版本 REV.	A
			X.X	±0.30	批 准 APPROVAL		产品料号 PART NO.		PM254-1-N-Z-3.0-XX-C	单 位 UNITS	mm
			X.XX	±0.20	比 例 SCALE		材 料 MATERIAL			页 次 SHEET	1/1
			X.XXX	±0.10	投 影 Projection						
序号 No.	变更内容 MODIFY CONTENT	日期 MODIFY DATE	Angle	±3.0°							

X-ON Electronics

Largest Supplier of Electrical and Electronic Components

Click to view similar products for [Headers & Wire Housings](#) category:

Click to view products by [HCTL](#) manufacturer:

Other Similar products are found below :

[57102-F02-18ULF](#) [58102-G61-06LF](#) [582553-1](#) [009176003701906](#) [01.001.5753.1](#) [0050291907](#) [02.125.8002.8](#) [609-3404](#) [61062-3](#)
[CSU011177004](#) [622-0430](#) [622-3653LF](#) [63453-116](#) [636-1030](#) [636-1427](#) [636-3427](#) [636-4007](#) [641938-9](#) [644827-2](#) [65495-038](#) [65692-001LF](#)
[65781-018](#) [65781-047](#) [65817-010LF](#) [65817-015LF](#) [66207-023LF](#) [67095-007LF](#) [67601157](#) [68631-112](#) [68645-018](#) [699319-000](#)
[M90C108951C](#) [70.362.1628.0](#) [70-4210](#) [70-4226B](#) [70-4853B](#) [707-5028](#) [71.350.2428.0](#) [71961-016LF](#) [733-134](#) [733-162](#) [754199-000](#) [760-](#)
[3052](#) [80.063.4001.1](#) [800-90-001-10-001000](#) [800-90-010-10-002000](#) [801-43-002-10-013000](#) [801-43-006-10-002000](#) [803-41-018-10-001000](#)
[803-43-024-10-001000](#)