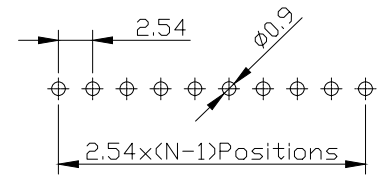


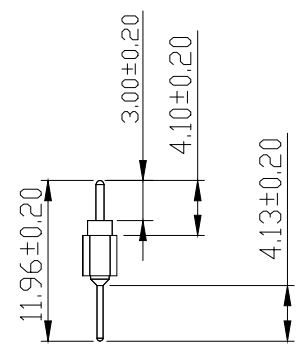
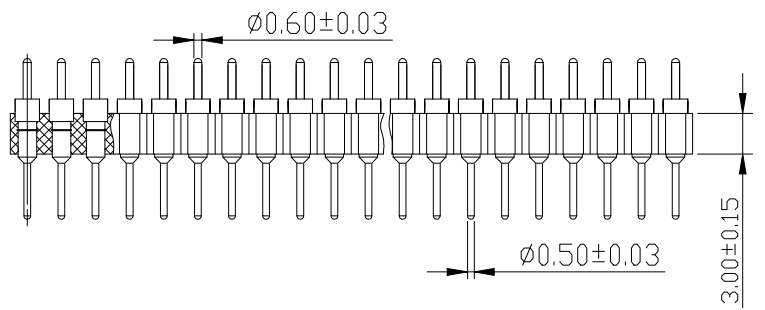
Recommended P.C.B Layout(Top Side)  
(PCB BOARD TOLERANCE±0.05)



Materials  
Pin: Brass,machined,(H59-3)  
Plating:Gold plated: 1.25u"m/50u"nickel,full gold  
Insulator body(black): PPS( UL94V-0)

Electrical  
Current rating: 3 Amps/contact max.  
Contact resistance:20mΩ  
Insulation resistance:1000MΩ  
Operating voltage:60 AC/DC

Mechanical  
Operating temperature :Gold plated:-55C to +105C  
(Continuous) -67"H to +105"H  
Tin plated:-40°C to +105°C  
Soldering temperature:260°C,10s max



**Ordering Information**

PZ 254 - \* - N - Z - \*\* - C

No.of Rows 1=Single Row 2=Dual Row	No.of Pins 2-40Pin	Type 2-直排 4-弯排 8-弯排	Contact Plating G0:Gold Flash G1:1u" Gold G2:3u" Gold G3:5u" Gold G4:10u" Gold G5:15u" Gold G6:30u" Gold S0:Gold Flash/Tin S1:Tin	Round Pin (圆针)
--	-----------------------	------------------------------	--	-------------------

			GENERAL TOLERANCE		制 图 DRAWING		<b>深圳市华灿天禄电子有限公司</b> ShenzhenhuacantianluELECTRONICS CO., LTD				
			DIM	TOL	审 核 CHECK						
			X. X	±0.30	批 准 APPROVAL		产品名称 TITLE	2.54 单排 直排针 塑高3.0 (上针0.6 下针0.5)	版 本 REV.	A	
			X. XX	±0.20	比 例 SCALE		产品料号 PART NO.	PZ254-1-N-Z-XX-C	单 位 UNITS	mm	
1	初版发行	日期			投 影 Projection		材 料 MATERIAL			页 次 SHEET	1/1
序号 No.	变更内容 MODIFY CONTENT	日期 MODIFY DATE	Angle	±3.0°							

## X-ON Electronics

Largest Supplier of Electrical and Electronic Components

*Click to view similar products for [Headers & Wire Housings](#) category:*

*Click to view products by [HCTL](#) manufacturer:*

Other Similar products are found below :

[57102-F02-18ULF](#) [58102-G61-06LF](#) [582553-1](#) [009176003701906](#) [01.001.5753.1](#) [0050291907](#) [02.125.8002.8](#) [609-3404](#) [61062-3](#)  
[CSU011177004](#) [622-0430](#) [622-3653LF](#) [63453-116](#) [636-1030](#) [636-1427](#) [636-3427](#) [636-4007](#) [641938-9](#) [644827-2](#) [65495-038](#) [65692-001LF](#)  
[65781-018](#) [65781-047](#) [65817-010LF](#) [65817-015LF](#) [66207-023LF](#) [67095-007LF](#) [67601157](#) [68631-112](#) [68645-018](#) [699319-000](#)  
[M90C108951C](#) [70.362.1628.0](#) [70-4210](#) [70-4226B](#) [70-4853B](#) [707-5028](#) [71.350.2428.0](#) [71961-016LF](#) [733-134](#) [733-162](#) [754199-000](#) [760-](#)  
[3052](#) [80.063.4001.1](#) [800-90-001-10-001000](#) [800-90-010-10-002000](#) [801-43-002-10-013000](#) [801-43-006-10-002000](#) [803-41-018-10-001000](#)  
[803-43-024-10-001000](#)