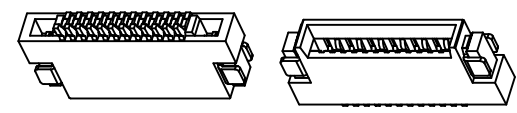
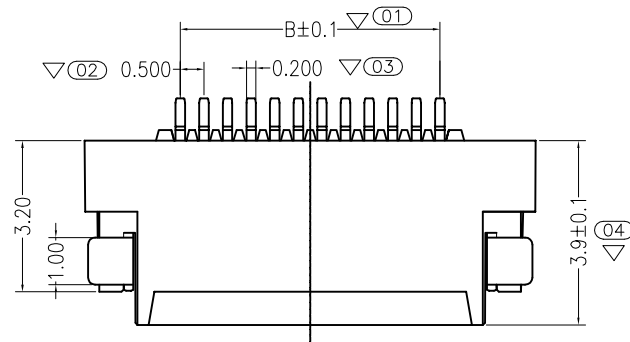
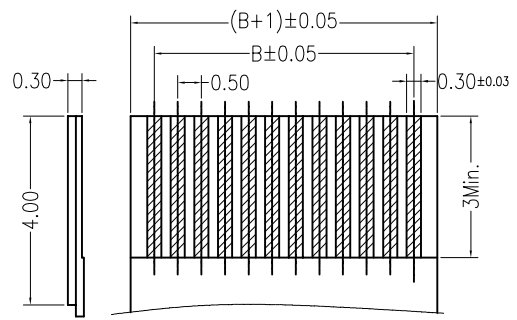
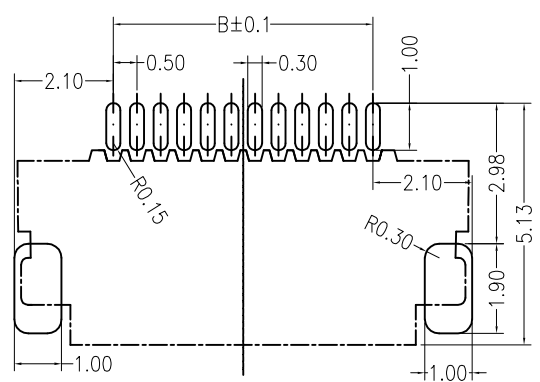
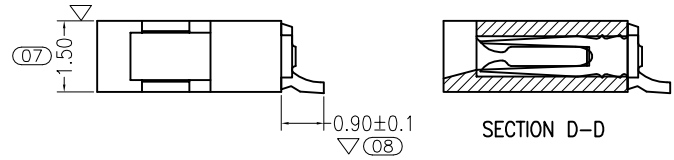
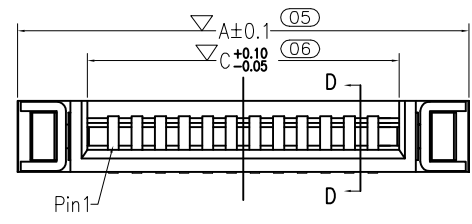


| 修 订 | 标 记 | 修 改 描 述 | 签 名 | 日 期 |
|-----|-----|-------------|-----------|------------|
| REV | NO | DESCRIPTION | SIGNATURE | DATE |
| | | NEW DWG | | 2016-03-12 |



NOTE:
 1.MATERIAL
 HOUSING:LCP UL 94-V0
 CONTACTS: BRASS T=0.20
 LEG:BRASS T=0.20
 2.PLATING:
 CONTACTS:TIN OVER NICKEL
 LEG:TIN OVER NICKEL
 3.MARK"▽"DIMENSION IS IMPORTANT DIMENSION



| Part No. | Dimension | | | Part No. | Dimension | | |
|----------|-----------|------|-------|----------|-----------|------|-------|
| | A | B | C | | A | B | C |
| 4P | 5.53 | 1.5 | 2.57 | 33P | 20.03 | 16.0 | 17.07 |
| 5P | 6.03 | 2.0 | 3.07 | 34P | 20.53 | 16.5 | 17.57 |
| 6P | 6.53 | 2.5 | 3.57 | 35P | 21.03 | 17.0 | 18.07 |
| 7P | 7.03 | 3.0 | 4.07 | 36P | 21.53 | 17.5 | 18.57 |
| 8P | 7.53 | 3.5 | 4.57 | 37P | 22.03 | 18.0 | 19.07 |
| 9P | 8.03 | 4.0 | 5.07 | 38P | 22.53 | 18.5 | 19.57 |
| 10P | 8.53 | 4.5 | 5.57 | 39P | 23.03 | 19.0 | 20.07 |
| 11P | 9.03 | 5.0 | 6.07 | 40P | 23.53 | 19.5 | 20.57 |
| 12P | 9.53 | 5.5 | 6.57 | 41P | 24.03 | 20.0 | 21.07 |
| 13P | 10.03 | 6.0 | 7.07 | 42P | 24.53 | 20.5 | 21.57 |
| 14P | 10.53 | 6.5 | 7.57 | 43P | 25.03 | 21.0 | 22.07 |
| 15P | 11.03 | 7.0 | 8.07 | 44P | 25.53 | 21.5 | 22.57 |
| 16P | 11.53 | 7.5 | 8.57 | 45P | 26.03 | 22.0 | 23.07 |
| 17P | 12.03 | 8.0 | 9.07 | 46P | 26.53 | 22.5 | 23.57 |
| 18P | 12.53 | 8.5 | 9.57 | 47P | 27.03 | 23.0 | 24.07 |
| 19P | 13.03 | 9.0 | 10.07 | 48P | 27.53 | 23.5 | 24.57 |
| 20P | 13.53 | 9.5 | 10.57 | 49P | 28.03 | 24.0 | 25.07 |
| 21P | 14.03 | 10.0 | 11.07 | 50P | 28.53 | 24.5 | 25.57 |
| 22P | 14.53 | 10.5 | 11.57 | 51P | 29.03 | 25.0 | 26.07 |
| 23P | 15.03 | 11.0 | 12.07 | 52P | 29.53 | 25.5 | 26.57 |
| 24P | 15.53 | 11.5 | 12.57 | 53P | 30.03 | 26.0 | 27.07 |
| 25P | 16.03 | 12.0 | 13.07 | 54P | 30.53 | 26.5 | 27.57 |
| 26P | 16.53 | 12.5 | 13.57 | 55P | 31.03 | 27.0 | 28.07 |
| 27P | 17.03 | 13.0 | 14.07 | 56P | 31.53 | 27.5 | 28.57 |
| 28P | 17.53 | 13.5 | 14.57 | 57P | 32.03 | 28.0 | 29.07 |
| 29P | 18.03 | 14.0 | 15.07 | 58P | 32.53 | 28.5 | 29.57 |
| 30P | 18.53 | 14.5 | 15.57 | 59P | 33.03 | 29.0 | 30.07 |
| 31P | 19.03 | 15.0 | 16.07 | 60P | 33.53 | 29.5 | 30.57 |
| 32P | 19.53 | 15.5 | 16.57 | | | | |

Recommended P.C.B Layout

Applicable FPC



深圳市华德共创科技有限公司
 Shenzhen Huade co-create Technology Co.,LTD
 电话: 0755-23304126 传真: 0755-29940187

| | | | | | | | | |
|-----------------------------------------------------|-------|-----------------------------------------------------------------------------------------------------------------------------------------------------------------------------|------------------------------------|-------------------|----------------------------------|-------|------|-------------|
| -TOLERANCES- UNLESS OTHERWISE SPECIFIED 公差参数表 | |   | TITLE: 产品名称: FPC 0.5间距1.5高无锁双面接 | | | | | |
| X.X | ±0.30 | X.X* | ±3° | APPD: 核准: | PART NO: 产品编号: 0.5K-1.5W-nPWB | | | |
| X.XX | ±0.20 | X.XX* | ±2° | CHECK: 校对: 王建业 | DATE | SCALE | UNIT | CODE NUMBER |
| X.XXX | ±0.10 | X.XXX* | ±1° | DRAW: 绘图: 黄艳兰 | 2016-03-12 | 1:1 | mm | A001 |

X-ON Electronics

Largest Supplier of Electrical and Electronic Components

Click to view similar products for [FFC & FPC Connectors](#) category:

Click to view products by [HDGC](#) manufacturer:

Other Similar products are found below :

[00-6200-227-022-800](#) [006205250500825+](#) [006205280500825+](#) [FPH-1602G](#) [52610-1275](#) [XF3M\(1\)-1415-1B-R100](#) [501864-3091-TR225](#)
[086222026001800](#) [52610-0675](#) [62674-201121DLF](#) [62684-36210E9ALF](#) [52746-1671-TR250](#) [10051922-2810EHLF](#) [686322124422](#) [XF3M-](#)
[2915-1B-R100](#) [AYF353125A](#) [AYF530665TA](#) [AYF534065TA](#) [20FLH-RSM1-TB](#) [AYF351525](#) [086212040340800+](#) [AYF530365TA](#) [67000-](#)
[004LF](#) [006207341915000+](#) [207356-1](#) [67000-003LF](#) [SFW12R-5STE9LF](#) [SFW18R-1STAE9LF](#) [SFW4R-5STE9LF](#) [52807-0430](#)
[046283021002868+](#) [502250-8027](#) [104267-9617](#) [66987-011LF](#) [HFW8S-2STAE1HLF](#) [67000-008LF](#) [HFW22R-2STE1H1LF](#) [0781271110](#)
[0781272410](#) [0781272810](#) [5019511030](#) [FH28K-40S-0.5SH](#) [200528-0260](#) [5039084120](#) [503908-5120](#) [SFW20R-1STGE5LF](#) [FH12-18S-0.5SH](#)
[686116183522](#) [686114183522](#) [502078-5362](#)