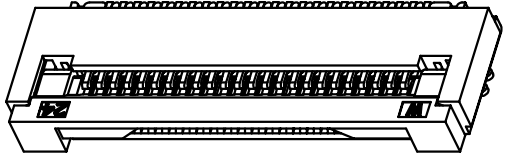
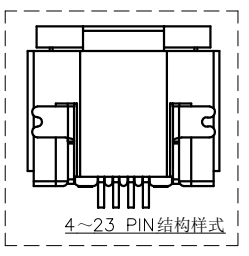
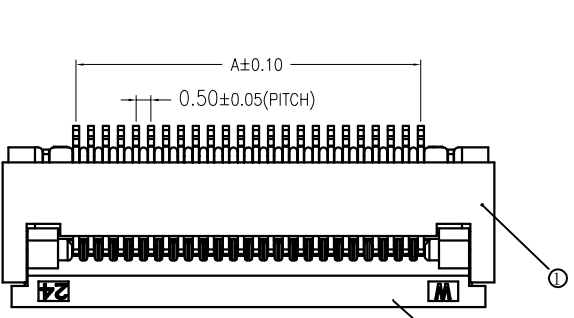
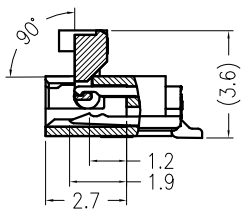
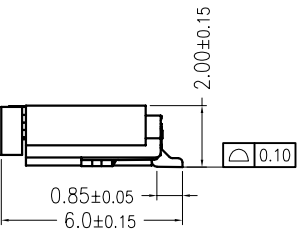
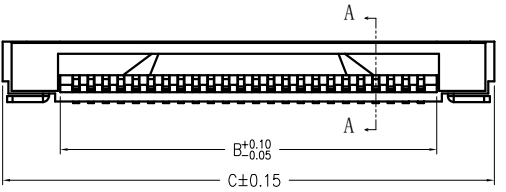


A B C D E F

修订	标记	修改摘要	签名	日期
REV	MARK	REVISION DESCRIPTION	SIGNATURE	DATE
NO		NEW DWG		2016-03-12

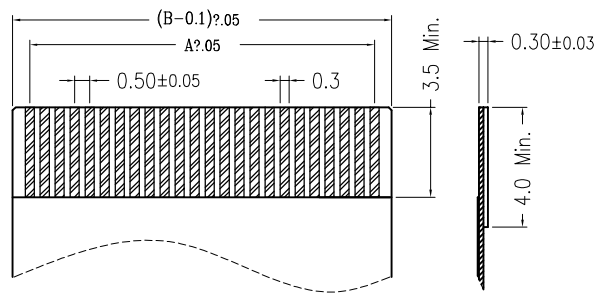
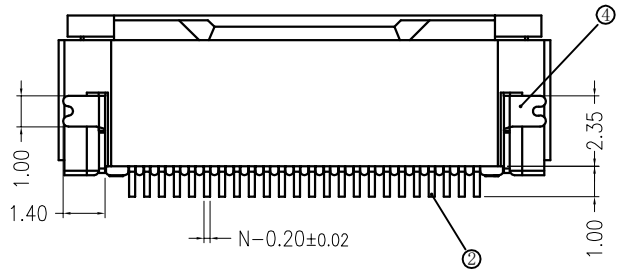


序号 (NO.)	品名 (Name)	材质 (Material)
①	0.5掀盖胶芯(H=2.0) 0.5 Pitch Easy-on Type Housing (H=2.0)	LCP UL94V-0 本色 <b>Natural</b>
②	0.5掀盖端子(H=2.0) 0.5 Pitch Easy-on Type Terminal (H=2.0)	磷青铜/表面镀锡 Phosphor Bronze/ Tin Plating
③	0.5掀盖后盖(H=2.0) 0.5 Pitch Easy-on Type Actuator (H=2.0)	LCP UL94V-0 黑色 <b>Black</b>
④	0.5掀盖焊片(H=2.0) 0.5 Pitch Easy-on Type Fitting Nail (H=2.0)	磷青铜/表面镀锡 Phosphor Bronze/ Tin Plating



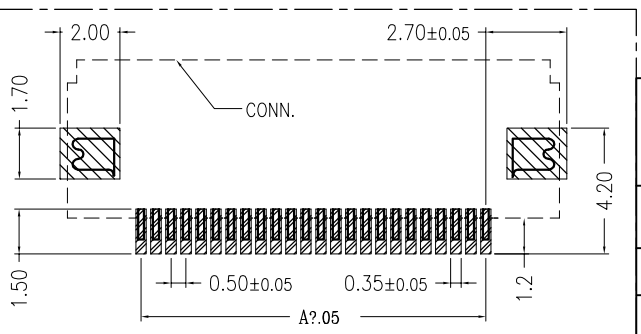
SECTION A-A

CKT	A			B			C			
	A	B	C	A	B	C	A	B	C	
4	1.50	2.56	6.40	34	16.50	17.56	21.40			
5	2.00	3.06	6.90	35	17.00	18.06	21.90			
6	2.50	3.56	7.40	36	17.50	18.56	22.40			
7	3.00	4.06	7.90	37	18.00	19.06	22.90			
8	3.50	4.56	8.40	38	18.50	19.56	23.40			
9	4.00	5.06	8.90	39	19.00	20.06	23.90			
10	4.50	5.56	9.40	40	19.50	20.56	24.40			
11	5.00	6.06	9.90	41	20.00	21.06	24.90			
12	5.50	6.56	10.40	42	20.50	21.56	25.40			
13	6.00	7.06	10.90	43	21.00	22.06	25.90			
14	6.50	7.56	11.40	44	21.50	22.56	26.40			
15	7.00	8.06	11.90	45	22.00	23.06	26.90			
16	7.50	8.56	12.40	46	22.50	23.56	27.40			
17	8.00	9.06	12.90	47	23.00	24.06	27.90			
18	8.50	9.56	13.40	48	23.50	24.56	28.40			
19	9.00	10.06	13.90	49	24.00	25.06	28.90			
20	9.50	10.56	14.40	50	24.50	25.56	29.40			
21	10.00	11.06	14.90	51	25.00	26.06	29.90			
22	10.50	11.56	15.40	52	25.50	26.56	30.40			
23	11.00	12.06	15.90	53	26.00	27.06	30.90			
24	11.50	12.56	16.40	54	26.50	27.56	31.40			
25	12.00	13.06	16.90	55	27.00	28.06	31.90			
26	12.50	13.56	17.40	56	27.50	28.56	32.40			
27	13.00	14.06	17.90	57	28.00	29.06	32.90			
28	13.50	14.56	18.40	58	28.50	29.56	33.40			
29	14.00	15.06	18.90	59	29.00	30.06	33.90			
30	14.50	15.56	19.40	60	29.50	30.56	34.40			
31	15.00	16.06	19.90	61	30.00	31.06	34.90			
32	15.50	16.56	20.40	64	31.50	32.56	36.40			
33	16.00	17.06	20.90	65	32.00	33.06	36.90			



适用扁平线(Applicable Flat Cable)

- 技术指标(Technical Index):
1. 塑件表面应光洁、无毛边、无明显收缩、缺陷、裂纹等现象。(The surface of the plastic parts should be smooth, no rough edges, no obvious shrinkage, defects, cracks and other phenomena.)
  2. 温度范围(Temperature range): -25° C~85° C.
  3. 额定电压(Rated voltage): 50V, AC/DC(=等效).
  4. 接触电阻(Contact resistance): ≤0.03Ω.
  5. 绝缘电阻(Insulation resistance): ≥500MΩ.
  6. 产品料号(Product material No.):



适用线路板(PCB LAYOUT)



**深圳市华德共创科技有限公司**  
Shenzhen Huade co-create Technology Co., LTD  
电话: 0755-23304126 传真: 0755-29940187

-TOLERANCES- UNLESS OTHERWISE SPECIFIED 公差参数表		 	TITLE: 产品名称: 0.5间距2.0高掀盖式				
X.X	±0.30	X.X*	±3°	APPD: 核准:		PART NO: 产品编号: 0.5K-DHGX-nPWB	
X.XX	±0.20	X.XX*	±2°	CHECK: 校对: 王建业	DATE	SCALE	UNIT
X.XXX	±0.10	X.XXX*	±1°	DRAW: 绘图: 黄艳兰	2016-03-12	1:1	mm
					CODE NUMBER	A001	

## X-ON Electronics

Largest Supplier of Electrical and Electronic Components

*Click to view similar products for [FFC & FPC Connectors](#) category:*

*Click to view products by [HDGC](#) manufacturer:*

Other Similar products are found below :

[00-6200-227-022-800](#) [006205250500825+](#) [006205280500825+](#) [FPH-1602G](#) [086222026001800](#) [52610-0675](#) [62674-201121DLF](#) [52746-1671-TR250](#) [10051922-1610EHLF](#) [10051922-2810EHLF](#) [686322124422](#) [XF3M-2915-1B-R100](#) [AYF353125A](#) [AYF530665TA](#) [AYF534065TA](#) [20FLH-RSM1-TB](#) [207356-1](#) [SFW12R-5STE9LF](#) [SFW18R-1STAE9LF](#) [SFW4R-5STE9LF](#) [52807-0430](#) [046283021002868+](#) [FFC05011-10SBB114W5M](#) [502250-8027](#) [67000-008LF](#) [200528-0260](#) [FH28K-10S-0.5SH](#) [FH52K-6S-0.5SH](#) [0.5K-DX-30PWB](#) [DS1020-08-10VBT12](#) [THD0515-34CL-GF](#) [X05A10L28G](#) [ECC2841061EU](#) [1.0K-DHQX-16PWB](#) [1.0K-DHQX-30PWB](#) [1775333-6](#) [10054365-202110ELF](#) [10054365-242110ELF](#) [10054365-282110ELF](#) [10064555-392220HLF](#) [59453-041110EBHLF](#) [59453-091110EDHLF](#) [62674-241141ALF](#) [62684-432100ALF](#) [62684-451100AHLF](#) [62684-5721N0ALF](#) [HFW11R-1STE1MTLF](#) [HFW12R-1STE9LF](#) [HFW14R-1STE9MTLF](#) [HFW18S-2STE9LF](#)