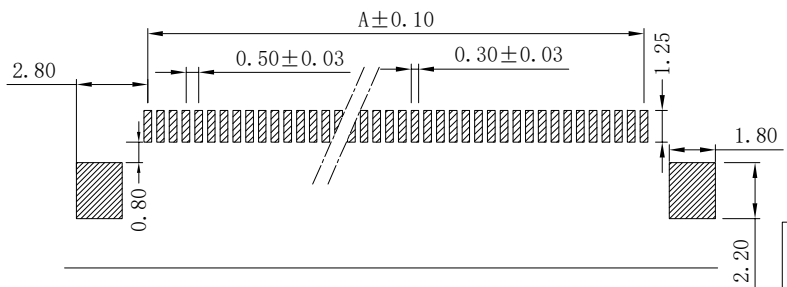
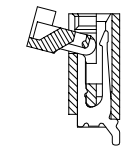
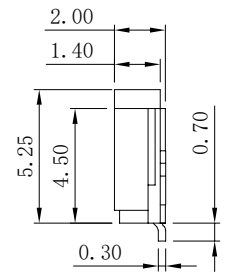
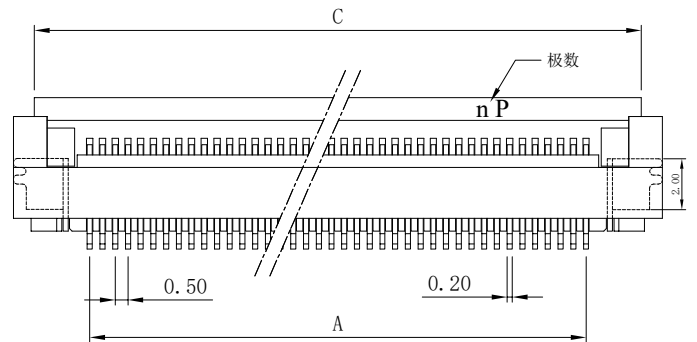
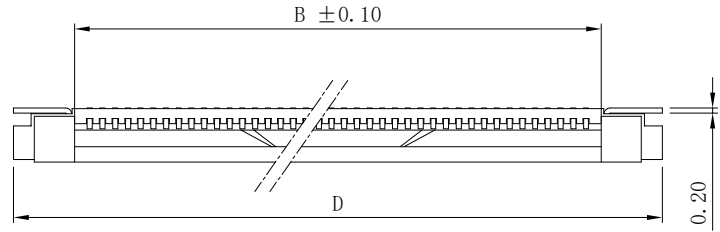
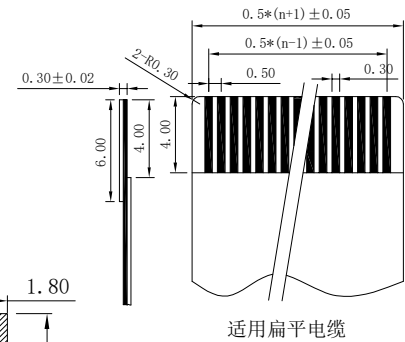


|           |        |                         |           |            |
|-----------|--------|-------------------------|-----------|------------|
| 修<br>订    | 标<br>记 | 修<br>改<br>描<br>要        | 签<br>名    | 日<br>期     |
| REV<br>NO | MARK   | REVISION<br>DESCRIPTION | SIGNATURE | DATE       |
|           |        | NEW DWG                 |           | 2016-03-12 |



PCB Layout



适用扁平电缆

性能：  
 额定电流：0.4A  
 额定电压：50V  
 耐电压：200V  
 接触电阻：≤20mΩ  
 绝缘电阻：500MΩ  
 工作温度：-20℃~+85℃

塑件（材质）：LCP本色，UL94V-0  
 锁扣（材质）：LCP黑色，UL94V-0  
 插簧（材质）：磷青铜，镀锡/镀金  
 焊片（材质）：黄铜，镀锡/镀金

| 孔位 | A     | B     | C     | D     |
|----|-------|-------|-------|-------|
| 4  | 1.50  | 2.60  | 6.00  | 7.40  |
| 5  | 2.00  | 3.10  | 6.50  | 7.90  |
| 6  | 2.50  | 3.60  | 7.00  | 8.40  |
| 7  | 3.00  | 4.10  | 7.50  | 8.90  |
| 8  | 3.50  | 4.60  | 8.00  | 9.40  |
| 9  | 4.00  | 5.10  | 8.50  | 9.90  |
| 10 | 4.50  | 5.60  | 9.00  | 10.40 |
| 11 | 5.00  | 6.10  | 9.50  | 10.90 |
| 12 | 5.50  | 6.60  | 10.00 | 11.40 |
| 13 | 6.00  | 7.10  | 10.50 | 11.90 |
| 14 | 6.50  | 7.60  | 11.00 | 12.40 |
| 15 | 7.00  | 8.10  | 11.50 | 12.90 |
| 16 | 7.50  | 8.60  | 12.00 | 13.40 |
| 17 | 8.00  | 9.10  | 12.50 | 13.90 |
| 18 | 8.50  | 9.60  | 13.00 | 14.40 |
| 19 | 9.00  | 10.10 | 13.50 | 14.90 |
| 20 | 9.50  | 10.60 | 14.00 | 15.40 |
| 21 | 10.00 | 11.10 | 14.50 | 15.90 |
| 22 | 10.50 | 11.60 | 15.00 | 16.40 |
| 23 | 11.00 | 12.10 | 15.50 | 16.90 |
| 24 | 11.50 | 12.60 | 16.00 | 17.40 |
| 25 | 12.00 | 13.10 | 16.50 | 17.90 |
| 26 | 12.50 | 13.60 | 17.00 | 18.40 |
| 27 | 13.00 | 14.10 | 17.50 | 18.90 |
| 28 | 13.50 | 14.60 | 18.00 | 19.40 |
| 29 | 14.00 | 15.10 | 18.50 | 19.90 |
| 30 | 14.50 | 15.60 | 19.00 | 20.40 |
| 31 | 15.00 | 16.10 | 19.50 | 20.90 |
| 32 | 15.50 | 16.60 | 20.00 | 21.40 |
| 33 | 16.00 | 17.10 | 20.50 | 21.90 |
| 34 | 16.50 | 17.60 | 21.00 | 22.40 |
| 35 | 17.00 | 18.10 | 21.50 | 22.90 |
| 36 | 17.50 | 18.60 | 22.00 | 23.40 |
| 37 | 18.00 | 19.10 | 22.50 | 23.90 |
| 38 | 18.50 | 19.60 | 23.00 | 24.40 |
| 39 | 19.00 | 20.10 | 23.50 | 24.90 |
| 40 | 19.50 | 20.60 | 24.00 | 25.40 |
| 41 | 20.00 | 21.10 | 24.50 | 25.90 |
| 42 | 20.50 | 21.60 | 25.00 | 26.40 |
| 43 | 21.00 | 22.10 | 25.50 | 26.90 |
| 44 | 21.50 | 22.60 | 26.00 | 27.40 |
| 45 | 22.00 | 23.10 | 26.50 | 27.90 |
| 46 | 22.50 | 23.60 | 27.00 | 28.40 |
| 47 | 23.00 | 24.10 | 27.50 | 28.90 |
| 48 | 23.50 | 24.60 | 28.00 | 29.40 |
| 49 | 24.00 | 25.10 | 28.50 | 29.90 |
| 50 | 24.50 | 25.60 | 29.00 | 30.40 |
| 51 | 25.00 | 26.10 | 29.50 | 30.90 |
| 52 | 25.50 | 26.60 | 30.00 | 31.40 |
| 53 | 26.00 | 27.10 | 30.50 | 31.90 |
| 54 | 26.50 | 27.60 | 31.00 | 32.40 |
| 55 | 27.00 | 28.10 | 31.50 | 32.90 |
| 56 | 27.50 | 28.60 | 32.00 | 33.40 |
| 57 | 28.00 | 29.10 | 32.50 | 33.90 |
| 58 | 28.50 | 29.60 | 33.00 | 34.40 |
| 59 | 29.00 | 30.10 | 33.50 | 34.90 |
| 60 | 29.50 | 30.60 | 34.00 | 35.40 |



深圳市华德共创科技有限公司  
Shenzhen Huade co-create Technology Co.,LTD  
电话：0755-23304126 传真：0755-29940187

TITLE:  
产品名称：0.5mm FPC 掀盖式(D型)下接

PART NO:  
产品编号：0.5K-DX-nPWB

|   |       |   |     |               |      |            |      |             |      |
|---|-------|---|-----|---------------|------|------------|------|-------------|------|
| -TOLERANCES-<br>UNLESS OTHERWISE SPECIFIED<br>公差参数表 |       |   |     |               |      |            |      |             |      |
| X.X   | ±0.30 | X.X*  | ±3° | APPD:<br>核准:  | DATE |            |      |             |      |
| X.XX  | ±0.20 | X.XX*   | ±2° | CHECK:<br>校对: | 王建业  | SCALE      | UNIT | CODE NUMBER |      |
| X.XXX   | ±0.10 | X.XXX*  | ±1° | DRAW:<br>绘图:  | 黄艳兰  | 2016-03-12 | 1:1  | mm          | A001 |

## X-ON Electronics

Largest Supplier of Electrical and Electronic Components

*Click to view similar products for [FFC & FPC Connectors](#) category:*

*Click to view products by [HDGC](#) manufacturer:*

Other Similar products are found below :

[00-6200-227-022-800](#) [006205250500825+](#) [006205280500825+](#) [FPH-1602G](#) [FPH-2022G](#) [52610-1275](#) [501864-3091-TR225](#)  
[086222026001800](#) [52610-0675](#) [62674-201121DLF](#) [62684-36210E9ALF](#) [52746-1671-TR250](#) [10051922-2810EHLF](#) [686322124422](#) [XF3M-](#)  
[2915-1B-R100](#) [AYF353125A](#) [AYF530665TA](#) [AYF534065TA](#) [AYF351525](#) [086212040340800+](#) [AYF530365TA](#) [67000-004LF](#)  
[006207341915000+](#) [207356-1](#) [67000-003LF](#) [HFW14R-2STE9LF](#) [SFW12R-5STE9LF](#) [SFW18R-1STAE9LF](#) [SFW4R-5STE9LF](#) [52807-0430](#)  
[046283021002868+](#) [502250-8027](#) [104267-9617](#) [66987-011LF](#) [HFW8S-2STAE1HLF](#) [67000-008LF](#) [HFW22R-2STE1H1LF](#) [0781271110](#)  
[5019511030](#) [200528-0260](#) [5039084120](#) [503908-5120](#) [SFW20R-1STGE5LF](#) [FH12-18S-0.5SH](#) [686116183522](#) [FH64MA-11S-0.25SHW](#)  
[686114183522](#) [502078-5362](#) [FH52K-68S-0.5SH](#) [FH26W-23S-0.3SHW\(60\)](#)