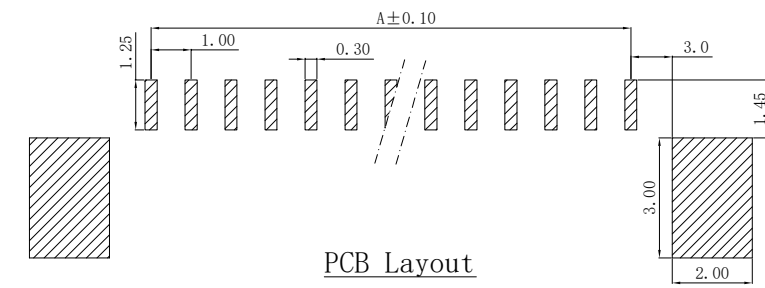
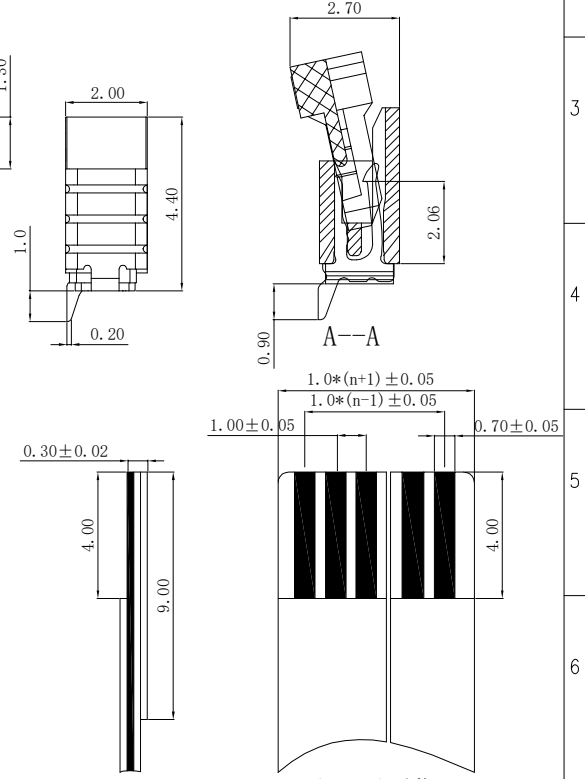
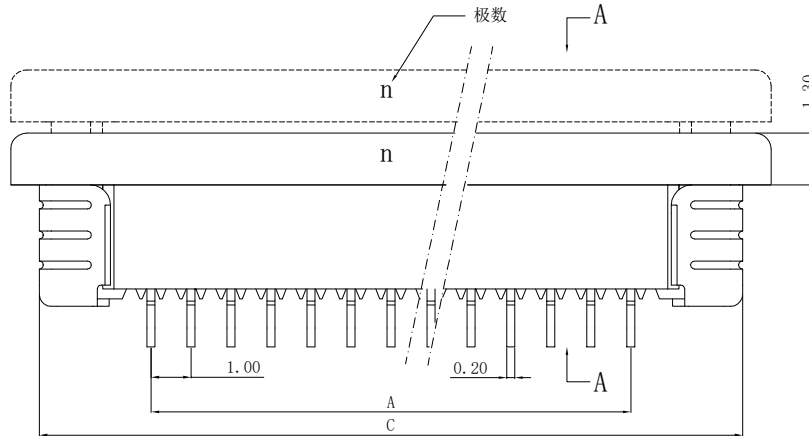
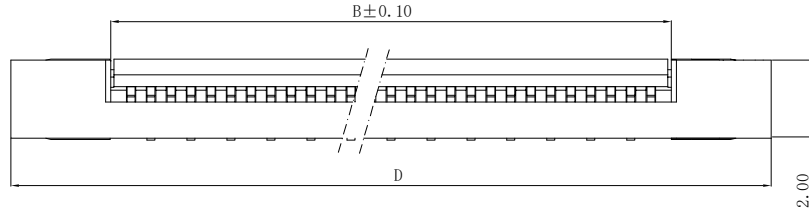


|                     |                |   |                     |                |
|---------------------|----------------|---|---------------------|----------------|
| 修<br>订<br>REV<br>NO | 标<br>记<br>MARK | 修<br>改<br>描<br>要<br>REVISION<br>DESCRIPTION | 签<br>名<br>SIGNATURE | 日<br>期<br>DATE |
|                     |                | NEW DWG                                     |                     | 2016-03-12     |

性能:


额定电流: 0.4A  
 额定电压: 50V  
 耐电压: 200V  
 接触电阻:  $\leq 20m\Omega$   
 绝缘电阻:  $500M\Omega$   
 工作温度:  $-20^{\circ}C \sim +85^{\circ}C$

塑件 (材质): LCP, UL94V-0  
 锁扣 (材质): LCP, UL94V-0  
 插簧 (材质): 磷青铜, 镀锡/镀金  
 焊片 (材质): 磷青铜, 镀锡/镀金


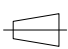


| 孔位 | A     | B     | C     | D     |
|----|-------|-------|-------|-------|
| 2  | 1.00  | 3.10  | 6.85  | 8.15  |
| 3  | 2.00  | 4.10  | 7.85  | 9.15  |
| 4  | 3.00  | 5.10  | 8.85  | 10.15 |
| 5  | 4.00  | 6.10  | 9.85  | 11.15 |
| 6  | 5.00  | 7.10  | 10.85 | 12.15 |
| 7  | 6.00  | 8.10  | 11.85 | 13.15 |
| 8  | 7.00  | 9.10  | 12.85 | 14.15 |
| 9  | 8.00  | 10.10 | 13.85 | 15.15 |
| 10 | 9.00  | 11.10 | 14.85 | 16.15 |
| 11 | 10.00 | 12.10 | 15.85 | 17.15 |
| 12 | 11.00 | 13.10 | 16.85 | 18.15 |
| 13 | 12.00 | 14.10 | 17.85 | 19.15 |
| 14 | 13.00 | 15.10 | 18.85 | 20.15 |
| 15 | 14.00 | 16.10 | 19.85 | 21.15 |
| 16 | 15.00 | 17.10 | 20.85 | 22.15 |
| 17 | 16.00 | 18.10 | 21.85 | 23.15 |
| 18 | 17.00 | 19.10 | 22.85 | 24.15 |
| 19 | 18.00 | 20.10 | 23.85 | 25.15 |
| 20 | 19.00 | 21.10 | 24.85 | 26.15 |
| 21 | 20.00 | 22.10 | 25.85 | 27.15 |
| 22 | 21.00 | 23.10 | 26.85 | 28.15 |
| 23 | 22.00 | 24.10 | 27.85 | 29.15 |
| 24 | 23.00 | 25.10 | 28.85 | 30.15 |
| 25 | 24.00 | 26.10 | 29.85 | 31.15 |
| 26 | 25.00 | 27.10 | 30.85 | 32.15 |
| 27 | 26.00 | 28.10 | 31.85 | 33.15 |
| 28 | 27.00 | 29.10 | 32.85 | 34.15 |
| 29 | 28.00 | 30.10 | 33.85 | 35.15 |
| 30 | 29.00 | 31.10 | 34.85 | 36.15 |

适用电缆



深圳市华德共创科技有限公司  
 Shenzhen Huade co-create Technology Co., LTD  
 电话: 0755-23304126 传真: 0755-29940187

|   |       |   |  |                   |                                |       |      |             |
|---|-------|---|--|-------------------|--------------------------------|-------|------|-------------|
| -TOLERANCES-<br>UNLESS OTHERWISE SPECIFIED<br>公差参数表 |       |   | TITLE:<br>产品名称: 1.0mm FPC (A型) 上接(H=2.0) |                   |                                |       |      |             |
| X.X   | ±0.30 | X.X*  | ±3°                                      | APPD:<br>核准:      | PART NO:<br>产品编号: 1.0K-LS-nPWB |       |      |             |
| X.XX  | ±0.20 | X.XX*   | ±2°                                      | CHECK:<br>校对: 王建业 | DATE                           | SCALE | UNIT | CODE NUMBER |
| X.XXX   | ±0.10 | X.XXX*  | ±1°                                      | DRAW:<br>绘图: 黄艳兰  | 2014-04-16                     | 1:1   | mm   | A001        |

## X-ON Electronics

Largest Supplier of Electrical and Electronic Components

*Click to view similar products for [FFC & FPC Connectors](#) category:*

*Click to view products by [HDGC](#) manufacturer:*

Other Similar products are found below :

[00-6200-227-022-800](#) [006205250500825+](#) [006205280500825+](#) [FPH-1602G](#) [086222026001800](#) [52610-0675](#) [62674-201121DLF](#) [52746-1671-TR250](#) [10051922-1610EHLF](#) [10051922-2810EHLF](#) [686322124422](#) [XF3M-2915-1B-R100](#) [AYF353125A](#) [AYF530665TA](#) [AYF534065TA](#) [20FLH-RSM1-TB](#) [PCA-7F-25-HL-3-G](#) [207356-1](#) [52807-0430](#) [FFC05011-10SBB114W5M](#) [502250-8027](#) [FH28K-40S-0.5SH](#) [200528-0260](#) [FH28K-10S-0.5SH](#) [501951-1250](#) [X05B20U43T](#) [0.5K-DX-30PWB](#) [DS1020-08-10VBT12](#) [THD0515-34CL-GF](#) [X05A10L28G](#) [ECC2841061EU](#) [20539-030E-01](#) [1.0K-DHQX-16PWB](#) [1.0K-DHQX-30PWB](#) [1775333-6](#) [10054365-202110ELF](#) [10054365-242110ELF](#) [10054365-282110ELF](#) [10064555-392220HLF](#) [59453-041110EBHLF](#) [59453-091110EDHLF](#) [62674-241141ALF](#) [62684-432100ALF](#) [62684-451100AHLF](#) [62684-5721N0ALF](#) [HFW11R-1STE1MTLF](#) [HFW12R-1STE9LF](#) [HFW14R-1STE9MTLF](#) [HFW18S-2STE9LF](#) [HFW20R-1STAE1HLF](#)